

VOLUME 61, NO. 9

NOVEMBER 2014

THE PULSE

OF LONG ISLAND



Inside This Issue

- ❖ November / December 2014 Calendar of Events | 4
- ❖ Long Island's Electronic History | 5
- ❖ IEEE Long Island Section Awards Nominations | 6
- ❖ IEEE Long Island New Member Welcome | 7
- ❖ November / December 2014 Lectures and Seminars | 8-9
- ❖ 2014/2015 Conferences | 10-13



IEEE

IEEE
LONG ISLAND
SECTION



The ballot for the 2015 Long Island Section Officers goes online on the first of the month. Please take the time to show your support of the proposed Section Officers: John Vodopia for Chairman, M. Nazrul Islam for 1st Vice Chair, Lou D'Onofrio for 2nd Vice Chair, Santo Mazzola for Treasurer, and Marjaneh Issapour for Secretary. You will receive an email with voting instructions in the beginning of the month – if you do not, please contact me at chairman@IEEE.LI.

After the flurry of activity in October including three Long Island conferences - IESC 2014, NewNEB 2014 and CEWIT 2014 - November looks to be a little more relaxed.

The Long Island Section is sponsoring the **FIRST Robotics** through SBPLI. They are starting off with an off-season Invitational Event at Half Hollow Hills West High School, November 15th 2014, from 8:00 AM to 6:00 PM. This is a free event with many Long Island Schools attending to compete with their 2014 robots. The School address is 375 Wolf Hill Road, Dix Hills, NY 11746. Stop by and see what the competitions are all about. FIRST has reached out to us to find volunteers for the 2015 season – we will pass along that information when we get it.

While at the IESC conference, I spoke to a former IEEE member. He related to me that he had let his membership drop because he did not feel he was getting enough out of it. I asked him if he had attended any of the Chapter lectures or had volunteered for any of the Societies he was a member of, and he confessed that he had not. Now that he recently became unemployed, he is turning to IEEE events to network – a great benefit of the IEEE if you use it. I also informed him that unemployed and retired members are eligible for 50% membership dues reduction.

When a member joins the IEEE, they check off boxes that tell us their reasons for joining. The majority of members select Professional Networking, yet ironically we don't see them at Chapter and Section Events. Just like the gym membership I have but never use (I'll use it one day!) the value of your IEEE membership comes when you use it. Look over the calendar at www.IEEE.LI/calendar and come join us!

We are always looking for volunteers to fill positions on our Committees. Being a Committee Member is a great way to get to know how the Section works and what is going on and as a Committee Member your time commitment is what you want it to be. It is a great way to network, and an excellent resume enhancer. The Society Chapters are also looking for volunteers and ideas. The more you put in, the more you will get out.

If passive benefits are more to your liking, have you looked into the IEEE sponsored insurance plans? The term life insurance prices are unbelievably low (engineers are a very low risk group), and IEEE members get a deep discount on auto and home. I just switched to IEEE insurance and I am very sorry I did not do it sooner- the yearly savings more than pay for my IEEE membership.

The next meeting of the Executive Committee (ExCom) is Monday, November 24th at Telephonics in Farmingdale. The meeting is open to all members– just send me an email at chairman@IEEE.LI and I will add your name to the attendance list.

Please take the time to think about nominating someone for a Section Award. Details on the Awards and how to submit a nomination are inside the **Pulse**.

At the end of the month is Thanksgiving. I am hoping you can find time and reason to enjoy the Holiday.

John G. Schmidt
Chairman, IEEE Long Island Section
chairman@IEEE.LI

IEEE Long Island Section Officers

*CHAIRMAN***JOHN SCHMIDT**

Office: 516- 859-1679

chairman@IEEE.LI*FIRST VICE CHAIR***JOHN VODOPIA**

Office: 631-673-7555

EXT. 128

1vc@IEEE.LI*SECOND VICE CHAIR***M. NAZRUL ISLAM**

Office: 631-546-2464

2vc@IEEE.LI*TREASURER***METODI FILIPOV**

Office: 631-882-5992

treasurer@IEEE.LI*SECRETARY***LOU D'ONOFRIO**secretary@IEEE.LI*JUNIOR PAST CHAIR***THOMAS LANZISERO***SENIOR PAST CHAIR***SUSAN FRANK**

Affinity Groups

*YOUNG PROFESSIONALS***ADAM CHALSON**

631-755-7344

gold@IEEE.LI*LIFE MEMBERS AFFINITY GROUP***VICTOR ZOURIDES**life@IEEE.LI*STUDENT DEVELOPMENT / ACTIVITIES***NEIL RAMOS**student@IEEE.LI*WOMEN IN ENGINEERING (WIE)***MIHAELA RADU**wie@IEEE.LI

The IEEE Long Island Section Website

The IEEE LI Section website is update regularly to reflect recent section activity and upcoming events. Each Society and Affinity Group has a dedicated page which describes their function and includes contact information.

Visit our site at: www.IEEE.LI

Consultant's Network of Long Island

The Consultant's Network of Long Island maintains a referral service of engineering, computer, managerial & technical professionals. For more information, please visit their website at:

www.consult-li.com

Membership Development

For more information on membership with the Long Island Section of the IEEE, e-mail Nikolaos Golas at:

membership@IEEE.LI

NOVEMBER 2014

November 5, Wednesday

*IEEE Consultants Network
of Long Island Meeting*

Space Based Sensing

By J Viviana Vladutescu, PhD

Briarcliffe College

The Great Room

Bethpage, LI

6:30 PM - Pizza

7:00 PM - Presentation

November 13, Thursday

AIAA Section Meeting

**Lessons Learned From Our
Aborted Spacewalk In 2013**

By Jeffrey M. Hanley

Bethpage Public Library

Bethpage, NY

6:00 PM - Social Time

6:30 PM - Pizza

7:00 PM - Presentation

November 24, Monday

EXCOM Meeting

Telephonics

Farmingdale, LI

5:45 PM - Dinner

6:15 PM - Meeting

For more information
about these meetings and
lectures, please visit:

www.IEEE.LI/calendar



DECEMBER 2014

December 3, Wednesday

**Long Island Consultants
Network Meeting**

Briarcliffe College

The Great Room

Bethpage, LI

7:00 PM - Meeting

December 4, Thursday

**Instrumentation and
Measurement Society
Meeting**

Telephonics

Farmingdale, LI

6:00 PM - Refreshments

6:30 PM - Lecture

December 8, Monday

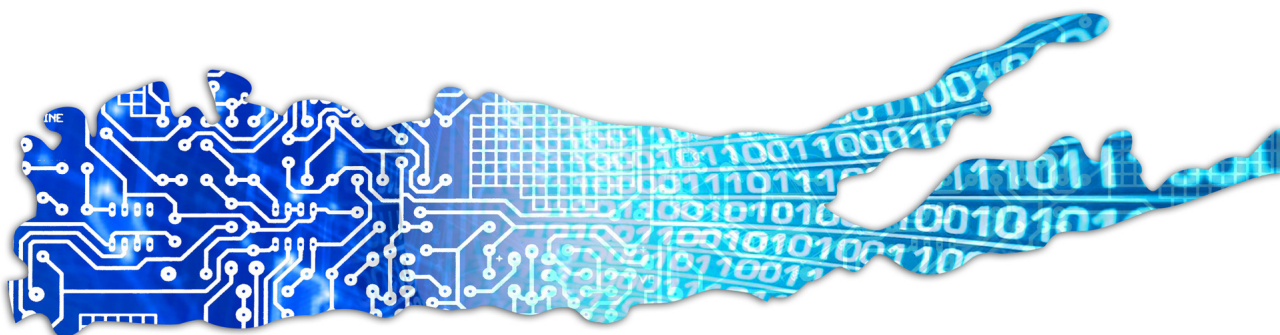
EXCOM Meeting

Telephonics

Farmingdale, LI

5:45 PM - Dinner

6:15 PM - Meeting



Long Island's Electrical and Electronic History

By Jesse Taub, IEEE Long Island Section Historian

We continue to peruse old issues of *The Pulse* that are posted on our [Publications](#) page on the www.IEEE.LI/pulse website. We have now reached the 1960's. The January 1960 issue described a talk that was to be given at the Section's monthly meeting. It was titled, "The Strategy of Deterrence". The talk, given by Harry Davis of Rome Air Development Center, was very timely because we were in the midst of the cold war and the fear of a thermonuclear disaster was a concern. The issue featured an essay on future technology by the Section Chair, Greg Stephenson. Much of what he predicted came to be. It is recommended reading.

Other highlights were an announcement that John Dyer of Airborne Instruments Laboratory (AIL) became an IRE vice-president and Charles Hirsch of Hazeltine was given an award for his work on international standards for radio and television broadcasting. A symposium on Low Noise Receiver Systems was advertised. The speakers were from Bell Telephone Lab and AIL. The symposium disclosed new developments in parametric amplifiers which were hot topics in those days.

The February *Pulse* had an article about the new Polytechnic Graduate Center which was scheduled to be open for courses early in 1961. The land for the center was donated by Republic Aircraft. Many of us were saddened when the Graduate Center was demolished several years ago. AIL's one page advertisement described the development of an all transistor MTI radar clutter canceller. The topic for the Section's February meeting was "Height Finding Radars for Air Traffic Control" and the speaker was from the FAA.

The plans for the 1960 IRE National Convention were described. Long Island was well represented with the presentation of 27 technical papers. It was held at the Waldorf Astoria hotel and the Coliseum at Columbus Circle in Manhattan. The Coliseum no longer exists. IEEE National Conventions such as these are no longer held. They gave way to specialized Symposia organized by the IEEE's Technical Societies.

The Section's March meeting featured a talk on adaptive controls. The technology was still mostly analog. This issue also congratulated five new IRE Fellows from Long Island. They were: Drs. R. Hellmann and C. Dean of Hazeltine, W. Tolles of AIL, W. A. Lynch of Brooklyn Poly and D. S. Rau of RCA Communications.

An article on engineering education in India was also of interest. There were very few Indian engineers working the USA at that time but now there are many. Most of them that I have met were good engineers. I could not help but notice that there were several ads for engineering jobs in that issue. Apparently, it was a good time for engineering employment on Long Island.

Once again, I thank Rod Lowman, our former Historian for saving the old *Pulse* issue and James Colotti, our webmaster, for posting them on our website. I encourage all of our members to peruse these old issues. This window on the past helps us, in an intangible way, to have a clearer picture of the future.

IEEE Long Island Section Award Nominations

By Jesse Taub

Acknowledging the accomplishments of our peers is important to our profession. Each year, our Section gives several awards in various categories. You are encouraged to submit nominations for worthy candidates. You can find nomination forms on the IEEE.LI website. Click on Awards and then click on Nomination forms. Section Award nominations must be sent to me no later than December 1, 2014. They will be reviewed by the Section's Awards Committee. The names of the Section Awards and their criteria are listed below:

ALEX GRUENWALD AWARD

This Award honors an IEEE member who has made important contributions to our profession on Long Island, and to the IEEE at large. Alex Gruenwald was an IEEE pioneer in the area of professional activities. He was a very active member of the Long Island Section, and went on to be a Region 1 Director.

ATHANASIOS PAPOULIS AWARD

This award is presented to educators in engineering, science, or mathematics, either living or teaching within the boundaries of the Long Island Section of the IEEE, who has demonstrated innovative teaching techniques. Athanasios Papoulis was a professor at Polytechnic University who was committed to promoting quality technical education on Long Island.

HAROLD WHEELER AWARD

This Award recognizes an IEEE member who has demonstrated outstanding technical and management abilities. Harold Wheeler was a world-famous engineer, who throughout his career at Hazeltine and Wheeler Labs, made many important technical contributions. He was a founding member of the IEEE Long Island Section.

FRIEND OF THE IEEE LONG ISLAND SECTION AWARD

This award is given to a company or organization in recognition and appreciation of prominent and continued support of the IEEE Long Island Section and its members, in support of the Section's goals, activities and the Engineering Profession.

CHARLES HIRSCH AWARD

This Award recognizes an IEEE member who has made an outstanding technical contribution that has benefited Long Island. Charles Hirsch was a creative engineer at Hazeltine.

LIFETIME ACHIEVEMENT AWARD

This Award is given to a member who has demonstrated continual and distinguished leadership, outstanding career-long contributions and service benefiting the Engineering community and the IEEE LI Section. This award is the highest honor the IEEE Long Island Section bestows on an individual.

OUTSTANDING STUDENT CHAPTER AWARD

This award is given to an IEEE student chapter that is from one of the Long Island engineering schools. The award recognizes outstanding activities that encourage student interest in the IEEE.

OUTSTANDING VOLUNTEER AWARD

This award honors a Long Island Section member for substantial contributions to IEEE volunteer activities at the International, National, Region, Section, Chapter, or Society level.

OUTSTANDING YOUNG ENGINEER AWARD

This Award honors a Long Island IEEE member who has made important technical contributions prior to his or her 35th birthday.

AWARD NOMINATIONS

Each nomination must be received by December 1, 2014 and will be reviewed by our Section's Awards Committee. Each nomination should describe the nominee's accomplishments that relate to the Award criterion and should suggest a suitable citation. Those selected will be honored at our annual Awards Ceremony in the Spring of 2015. Nomination information for Region 1 and Fellow Awards will be given in future issues of *The Pulse*.

PLEASE SEND ALL NOMINATIONS TO: Jesse Taub at jjtaub@aol.com. Call at 631-320-1564 if you have any questions.



IEEE NEW MEMBER WELCOME

THE LONG ISLAND SECTION WOULD LIKE TO WELCOME THE FOLLOWING NEW MEMBERS FOR 2014!

- Clint Brown
- David Chiesa
- Marietta Costa
- Frederick Eugene Derenthal
- David Eberhard
- Leroy Farrell
- Robert Golebiewski
- Emad Adel Halawani
- David Kenneth Harupa Jr
- Ying Li
- George Los
- Olivia Macedo



Marlon Roberts

Cong Xie

Steven Schweiger

Jing Zou



would like to thank for it's support:



BODNER & O'ROURKE, LLP
PATENTS, TRADEMARKS, COPYRIGHTS

GERALD T. BODNER
PATENT ATTORNEY

(formerly an electrical engineer with AIL Systems, now ITT)

425 BROADHOLLOW ROAD, SUITE 120
MELVILLE, NEW YORK 11747
TEL. 631-249-7500 FAX 631-249-4508
gbodner@bodnerorourke.com



IEEE Consultants
Network of Long Island

The IEEE Consultants Network of Long Island (LICN) is presenting a lecture titled:
SPACE BASED SENSING

PRESENTED BY:

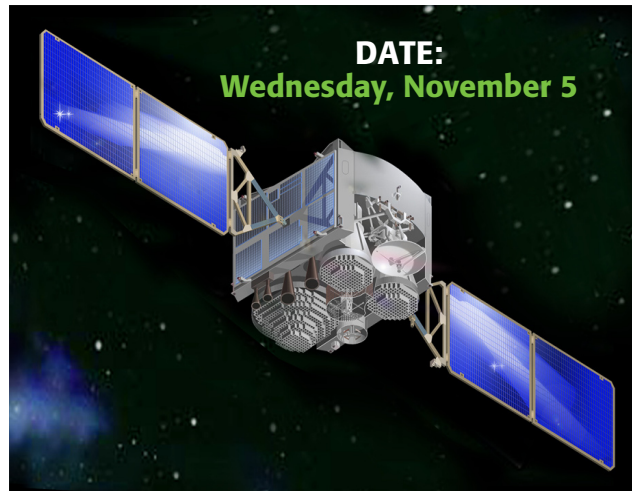
J Viviana Vladutescu, PhD
New York City College of
Technology/CUNY

LOCATION:

Briarcliffe College,
The Great Room,
1055 Stewart Avenue,
Bethpage, NY, 11714

TIME:

6:30 PM - Pizza
7:00 PM - Presentation



WHO SHOULD ATTEND?:

Engineers who are interested
in space based sensor technology.

COST:

This seminar is free and
all are invited; however, there
is a \$25 fee for CEU credit.
0.2 CEU Credits.

DIRECTIONS:

[http://www.licn.org/info/Directions2
Briarcliffe.htm](http://www.licn.org/info/Directions2Briarcliffe.htm) for a map & directions.

ABSTRACT:

This presentation will present remote sensing from space based platforms along with design considerations of spaced based instrument on board of the geostationary satellite. Attention is paid to the Radiative Transfer, Earth Views And Top-Level Sensor Design, Resolvable And Irresolvable Sources And Targets, Energy on Detector (EOD) And Phasing, Sensor Spectral Selection, Noise, Signal Processing as Limited by Space Environments, Sensor Forms: Scanner And Starer, Pixel Formation, Resolution And Line- Of-Sight Determination and Space Surveillance System Engineering in general.

SPEAKER BIO:

Daniela Viviana Vladutescu has received a B.S. in E.E. from Polytechnic University of Bucharest and a M.S. degree in EE from City College of the City University of New York(CUNY). In 2008 she has received her Ph.D. degree in EE from the Graduate Center of CUNY. Currently she is working as an Associate Professor within the Electrical and Telecommunications Engineering Technology Department at the New York City College of Technology of the City University of New York. Her research focus is in Optics and Remote Sensing of the Atmosphere collaborating with several centers in remote sensing like NOAA CREST, Earth Science Department at BNL, NASA GISS and NASA GSFC, Optics Branch 5510.

REGISTRATION:

The presentation is open to the general public. Pre-registration is not required, but is requested if CEU credit is planned. Please send pre-registration e-mail to ambertec@ieee.org. There is no admission fee, but there is a \$25 fee for CEU credit.

**For further information contact
John Dunn at 516-378-0979.**

IEEE Continuing Education Programs are peer-reviewed by content experts. This peer review guarantees both quality of the technical content of learning materials, as well as adherence to IEEE's strict criteria for educational excellence. All programs that pass this strict process are entitled to award IEEE Continuing Education Units (CEUs), recognized as the standard of excellence for continuing education programs in IEEE's fields of interest.



AIAA SECTION MEETING

LESSONS LEARNED FROM OUR ABORTED SPACEWALK IN 2013



DATE:

November 13, 2014

PRESENTED BY:

Jeffrey M. Hanley
*Director,
EVA Management Office
NASA Johnson Space Center*

LOCATION:

Bethpage Public Library
47 Powell Avenue,
Bethpage, NY, 11714

TIME:

6:00 PM - Social Time
6:30 PM - Pizza
7:00 PM - Presentation



During an Extra-Vehicular Activity (EVA), or spacewalk, in the summer of 2013, an Italian astronaut's spacesuit helmet started to fill with water and the EVA had to be aborted. He returned to the ISS and suffered no serious injury. This talk will focus on the lessons learned from this aborted spacewalk. The discussion will cover the contributors to the problem, and a blow by blow description of how events unfolded resulting in coming dangerously close to killing or injuring an astronaut. It will deal with the vagaries of dealing with aging and repurposed systems that were developed by a prior generation, changed operation context, and systems that suffered an atrophy of systems engineering understanding of the system behavior. It will also show what happens to team dynamics under such circumstances and how even high performing teams can develop blind spots, as prior catastrophes and close calls have demonstrated. This was the ultimate close call.

Jeff Hanley manages the space suit effort for NASA's Johnson Space Center in Houston, Texas, and has previously served as Director, Human Exploration Development Support and Manager, Constellation Program. He has also served as Deputy Project Manager for Verification for the James Webb Space Telescope at Goddard Space Flight Center; these duties followed serving over 20 years as a shuttle flight controller in Mission Control rising to Chief of the Flight Directors.

He has a M.S. in Natural and Applied Sciences, a B.S. in Electrical Engineering and has received a number of awards including the National Space Club Astronautics Engineer of the Year and from NASA, the Distinguished Service, Outstanding Leadership, Exceptional Service, and Exceptional Achievement Medals, plus the Silver Snoopy Award.

COST: Members & Guests- \$5, **Students-** Free

RESERVATIONS REQUESTED RSVP BY

November 12, 2014 to: David Paris at:

davidparis@optonline.net or (516) 458-8593

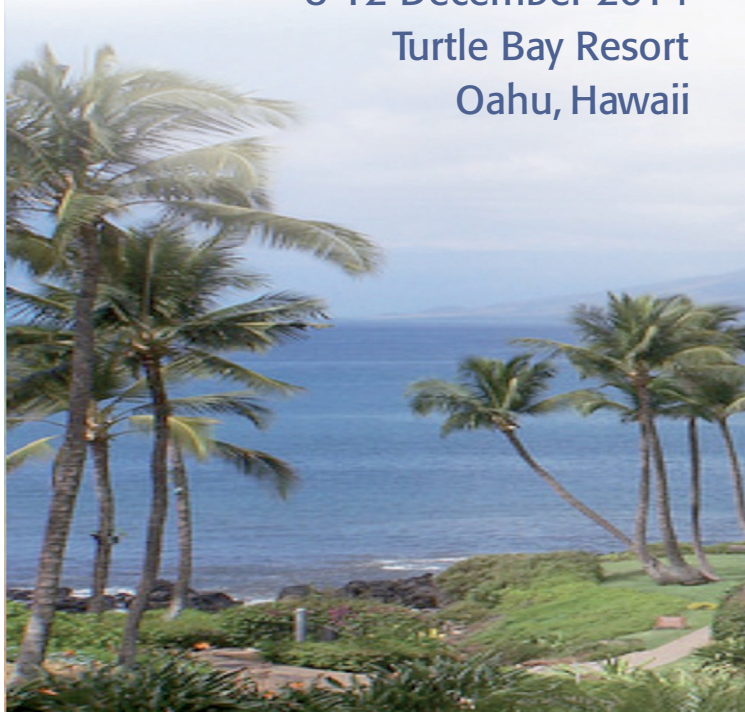
Directions: The library is west of Route 135 in Bethpage. Take Route 135 to Exit 8, then West on Powell Ave. for about 0.25 miles. The library is on the south side of the street. Park across Powell Ave., opposite the library.

EMBS MICRO & NANOTECHNOLOGY IN MEDICINE CONFERENCE

TRANSLATING TECHNOLOGY FROM THE BENCH TO THE BEDSIDE



MNMC 2014
 8-12 December 2014
 Turtle Bay Resort
 Oahu, Hawaii

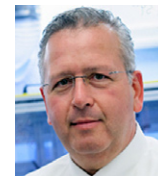


Various biomedical grand challenges facing our society and the world can be addressed by interfacing biology and medicine with Micro and Nanoscale technologies. These technologies hold great potential to impact early diagnosis, therapeutics, and management of disease. IEEE EMBS is sponsoring the second biennial Conference on Micro and Nanotechnology in Medicine to foster interaction between scientists, engineers and medical researchers in the context of real-world medical needs and issues. The Conference will promote vigorous and open dialogue towards the development of cutting edge technologies for faster, more quantitative, and less expensive biomedical solutions using advances in Micro and Nanotechnology. For more details, please visit: www.mnm.embs.org/2014/

KEYNOTE SPEAKERS



Joanna Aizenberg
 Harvard University



Joseph DeSimone
 University of North Carolina



Chad Mirkin
 Northwestern University



Buddy Ratner
 University Of Washington



Sangeeta Bhatia
 Massachusetts Institute of Technology



Luke P. Lee
 University of California, Berkeley





IEEE

IEEE
Signal Processing Society



IEEE International Symposium on Biomedical Imaging

APRIL 16th - 19th, 2015, BROOKLYN, NY USA

Conference Chairs

Elsa Angelini

Telecom ParisTech, France
Columbia University, USA

Jelena Kovačević

Carnegie Mellon University, USA

Program Chairs

Sebastien Ourselin

University College London, UK

Jens Rittcher

Oxford University, UK

Organizing Committee

Stephen Aylward, Kitware

Dana Brooks, Northeastern U.

Qi Duan, NIH

Elisa Konofagou, Columbia U.

Jan Kybic, Czech Tech. University

Erik Meijering, Erasmus MC

Wiro Niessen, Erasmus MC

Ricardo Otazo, NYU

Dirk Padfield, GE Healthcare

Gustavo Rohde, Carnegie Mellon

Badri Roysam, U. of Houston

Ivan Selesnick, Polytech NYU

Dimitri Van De Ville, EPFL

Simon Warfield, Harvard

Ge Yang, Carnegie Mellon

Contact

d.bernstein@ieee.org

The IEEE International Symposium on Biomedical Imaging (ISBI) is a premier interdisciplinary conference encompassing all scales of imaging in medicine and the life sciences. The 2015 meeting will continue its tradition of fostering knowledge transfer among different imaging communities and contributing to an integrative approach to biomedical imaging across all scales of observation.

ISBI is a joint initiative from the IEEE Signal Processing Society (SPS) and the IEEE Engineering in Medicine and Biology Society (EMBS). The 2015 meeting will open with a morning of tutorials, followed by a scientific program of plenary talks, invited special sessions, challenges, as well as oral and poster presentations of peer-reviewed papers.

High-quality papers are requested containing original contributions to mathematical, algorithmic, and computational aspects of biomedical imaging, from nano- to macro-scale. Topics of interest include image formation and reconstruction, computational and statistical image processing and analysis, dynamic imaging, visualization, image quality assessment, and physical, biological, and statistical modeling. We also encourage papers that elucidate biological processes (including molecular mechanisms) or translational ramification through integration of image-based data. Accepted 4-page regular papers will be published in the symposium proceedings & included in IEEE Xplore.

To encourage attendance by a broader audience of imaging scientists (in particular from the biology, radiology, and physics community) and offer additional opportunities for cross-fertilization, ISBI will again propose a second track featuring posters selected from abstract submissions without subsequent archival publication.

IMPORTANT DATES

JUNE- SEPT. 2014: Tutorials, Special, Sessions & Challenges Proposal Submission

AUGUST 1 - NOV. 10 2014: 4-Page Paper Submission

NOV. 20 - DEC. 20 2014: 1-Page Paper Submission

Venue: ISBI 2015 will be held at the **Marriott hotel at the Brooklyn bridge**, located on Adams street, next to the historical Court House building, with premier shopping, dining, and attractions in the heart of the Dumbo district. A short walk will take you to eight subway lines, a city bike station or a yellow cab to explore Brooklyn or to reach Manhattan just 1.5 miles (2 subway stations) across the East river for memorable nights in the Big Apple.

<http://biomedicalimaging.org/2015>



IEEE

IEEE
LONG ISLAND
SECTION

8th INTERNATIONAL CONFERENCE ON ETHICS IN BIOLOGY, ENGINEERING & MEDICINE



**April
24-26
2015**

www.downstate.edu/orthopaedics/bioethicsconf2015

Call for Abstracts

The program committee is seeking abstracts submission of paper relevant to this conference, which will be evaluated for inclusion in the final agenda as Oral presentations. The Deadline for abstract submission is **November 26, 2014**. Notification of abstract acceptance December 15, 2014. Selected papers will be published in the Ethics in Biology, Engineering, and Medicine: An International Journal.

An approximately 200-300 word single spaced abstract, text only, should be typed in font size No. 12. It should be typed on 8 1/2 x 11-inch paper with one-inch margins. The preferred way is to E-mail your abstract, followed with a hard copy. In your cover letter, please identify the corresponding author with complete mailing address, telephone number and E-mail address.

SUGGESTED TOPICS FOR PRESENTATIONS

- * ETHICS IN BIOENGINEERING
- * ETHICAL ISSUES IN BIOMEDICAL RESEARCH
- * ETHICS IN NANOBIOENGINEERING
- * ETHICS IN GENETIC ENGINEERING and CLONING
- * ETHICS IN STEM CELL RESEARCH
- * RESPONSIBLE CONDUCT IN RESEARCH
- * ETHICS IN SYNTHETIC BIOLOGY
- * ETHICS IN MEDICAL RESEARCH
- * MEDICAL ETHICS & HEALTH POLICY
- * ETHICAL ISSUES IN TISSUE ENGINEERING
- * NEUROETHICS
- * PRIVACY AND BIOINFORMATICS
- * ETHICS IN BIOBANKS
- * ETHICS IN GLOBAL HEALTH
- * ETHICS IN DENTISTRY

SUNY
DOWNSTATE
Medical Center

ICEBEM' 2015

Conference Chair:

Subrata Saha, PhD
SUNY Downstate Medical Center
EBM@downstate.edu
Office- (718)-613-8652
Fax - (718)-270-3983

Keynote Speakers:

Arthur L. Caplan, PhD
New York University, New York
Mildred Z. Solomon, Ed.D
The Hastings Center, New York

Invited Speakers:

George Khushf, PhD
University of South Carolina
Kenneth R. Foster, PhD
University of Pennsylvania
Wade Robison, PhD
Rochester Institute of Technology

Registration:

(Before March 1st, 2015)
Registration Fee*: \$200
One-Day Registration
(does not include banquet): \$150
Student Registration:* \$70
Guest Banquet Ticket: \$50

(After March 1st, 2015)
Registration Fee*: \$250
One-Day Registration
(does not include banquet): \$200
Student Registration:* \$90
Guest Banquet Ticket: \$50

Conference Site

SUNY Downstate Medical Center
450 Clarkson Avenue
Brooklyn, NY 11203



FRIDAY, MAY 1, 2015

LISAT 2015

Eleventh Annual IEEE Long Island Systems, Applications and Technology Conference

HELD AT THE FARMINGDALE STATE COLLEGE OF THE STATE UNIVERSITY OF NEW YORK, FARMINGDALE, NY

CALL FOR PAPERS, PRESENTATIONS, EXHIBITORS and STUDENT PAPERS

The Long Island Systems, Applications and Technology (LISAT) Conference features several parallel professional tracks including topics in systems, applications, and technology; a PDH program and an Exhibition. We are soliciting submissions for participation in both the technical program, applications program, and the exhibition, and are interested in papers, presentations, and exhibits that showcase the development and use of technology by local organizations. LISAT 2015 will also provide the opportunity for select student papers to be presented. Undergraduate and graduate students are encouraged to submit papers in an area of their interest or current work.

Authors shall be required to provide a six (6) page IEEE standard manuscript for publication in IEEE Xplore, and will be required to make a Power Point TM presentation at the conference. Manuscripts are subject to the LISAT Technical Program Committee's peer review and may require revision prior to final acceptance. Important dates for the Technical Program are:

LISAT 2015 IMPORTANT DATES	
MANUSCRIPTS FOR PUBLICATION AND COPYRIGHT RELEASES DUE	MARCH 27, 2015
NOTIFICATION OF ACCEPTANCE OF MANUSCRIPTS (SUBJECT TO FINAL EDITS)	APRIL 10, 2015
PRESENTER REGISTRATION	APRIL 17, 2015
FINAL MANUSCRIPT EDITS, BIOS, AND POWER POINT DUE	APRIL 17, 2015
LISAT2015 CONFERENCE	MAY 1, 2015

Detailed instructions on submission, manuscript and presentation templates, and information on the conference are available on the LISAT web site at WWW.IEEE.LI/LISAT. Manuscript format must agree with requirements specified in the Author's Kit which will be made available.

Each presentation will be 15 minutes long followed by 5 minutes of Q&A. One presenting author for each paper will be allowed to register at a discounted rate. At least one author must register for the conference **for each paper/presentation**. If one presenter is presenting multiple papers, then multiple registrations are required. A limited number of tutorial and application presentations which will not be published by the IEEE may also be accepted. LISAT encourages submissions from all areas of engineering, science, and technology. Past topics have including homeland defense, alternate energy sources, green building technologies, mobile communications, computer and network security, microwave technology, electromagnetic compatibility, mobile ad hoc networking, sensor fusion, antenna systems and processing, radio locating, radar systems and techniques, climate control, and biomedical engineering.

LISAT has a strict "No Podium, No Publish" policy. "Manuscripts will only be submitted for publication in IEEE Xplore if a presentation is made at the Conference."

For information on Exhibiting at LISAT, please contact: Jaime Lima at LIMA@Telephonics.com, **For all other information** contact LISAT2015 Conference Chair of the Technical Program Committee: Dr. Ronald Pirich at rpirich@gmail.com, Conference Chair: Dr. Charles Rubenstein at c.rubenstein@ieee.org or Conference Co-Chair: Dan Rogers at drogers@ieee.org.

LISAT is sponsored by the **IEEE Long Island Section** and its Technical Society Chapters and **IEEE Region 1**, in cooperation, for the last eleven years with the **Farmingdale State College of SUNY**. **Releases and Approvals:** *This conference will be unclassified and attended by both US and non-US persons. It is the author's responsibility to obtain all required company and government releases and approvals prior to making a paper submission. A statement that such releases and approvals have been obtained as well as a completed IEEE Copyright Form (signed by the submitting author) must accompany the manuscript of each accepted paper.*



Farmingdale State College
State University of New York



IEEE

IEEE LONG ISLAND SECTION



MEMBER IEEE L.I.
CONSULTANTS NETWORK



Peter Buitenkant
— CONSULTANT —

MICROPROCESSOR HARDWARE / SOFTWARE DESIGNS
DIGITAL CIRCUIT DESIGN • TRAINING COURSES

24 Thorngrove Lane
Dix Hills, NY 11746

VOICE: (631) 491-3414
EMAIL: peterbui@optonline.net

(516) 378-0979

ambertec@ieee.org

Ambertec, P.E., P.C.

John Dunn- MSEE, PE Engineering Consultant
Member IEEE Consultants Network of Long Island

<http://www.licn.org>

181 Marion Avenue

Merrick, NY 11566

Real Time Embedded – Banking/Brokerage – QA
OO Design – Compilers – Communications
Unix/Linux – Windows – C/C++ – HP – Sun – PC



EARLY ELECTRONICS

Hardware / Software Consulting Services

Chris Early, BSEE, MSCS, PE
154 Hempstead Avenue
Rockville Centre, NY 11570

unixdev@ix.netcom.com
Voice: (516) 764-1067
Fax: (516) 764-1124

SIGNALS IN MOTION



Len Anderson
President

P: 718-279-3953
F: 509-471-6496
E: LenAnder@SignalsInMotion.com
www.SignalsInMotion.com

Innovation Design and Solutions, Inc.

Electronic design, implementation and management

Internet access for embedded systems
Portable and low-power devices
Telephony and cellular/wireless

www.4innovation.biz

New York
631.427.1112

Massachusetts
508.967.2511

ADVANCE IN TECHNOLOGY, INC.
Electronic Design – Analog, Digital, RF and Systems

JOHN LIGUORI
CEO, MSEE
631-865-2423

82 Westwood Avenue, Deer Park, NY 11729

www.advance-in-technology.com
JLiguori@advancein-technology.com



Sadinsky Consulting
Samuel Sadinsky, P.E.

Engineering Consultant:

Electromechanical and Electronic Systems
Circuit Design and Amelioration
Plasma Sputtering and Etching

Voice/Fax (631)476-5780
s.sadinsky@ieee.org

79 Miller Avenue
Port Jefferson Station
New York, 11776-3735

Fred Katz Consulting, Inc.

93 STEVEN PLACE WEST HAUPPAUGE, NY 11788

Wireless,
Motion, Occupancy Sensors & Power Circuitry
Proposals, Contracts & Specification Development
Innovative Creation, Electro-Mechanical
Analog & Digital Circuit/System Design
System Analysis/Documentation
Commercial/Military Product Design
Sonar Systems and Acoustic Signal Processing



fred@fredkatzconsulting.com www.fredkatzconsulting.com

Fred Katz (631) 724-7702 Electronics Consultant
President

Memberships: IEEE Senior Life Member, IEEE LI Consultants Network, LI Metal Workers, Mensa Society, NYS Professional Inventors, Suffolk County Inventors

EXPERT WITNESS

TECHNICAL INVESTIGATOR

MARTIN KANNER AE, EE, MEE

PRODUCT LIABILITY
MACHINE INJURY

FIRE DAMAGE INJURY
LIGHTNING DAMAGE



POWER-CONTROLS
DIV.

sixxpoppy@juno.com
(516) 681-4346

42 Glenwood Road

Essex Systems



36 Flower Hill Rd
Huntington, NY 11743

Engineering Consulting
Electromechanical systems
Measurement & control
Signal Processing
Web Handling
Vibrations

www.essexsys.com

Phone: (631)271-9714
sjlbrown@essexsys.com

Jerry Brown
Consultant

Carl Meshenberg

Technology Consulting Services

Electronic Product Development
Project Management
Marketing Strategies
Contract Development

Mobile: 516-383-2595
Phone: 516-431-8306
CarlJoanm@gmail.com

PROGRAMMING PLUS®

2503 AVENUE X
BROOKLYN, N.Y. 11235

HARDWARE & SOFTWARE CONSULTING

• ADMINISTRATION • DATABASES • UNIX
• DEVELOPMENT • NETWORKS • LINUX
• ENGINEERING • INTERNET • VMS
• INTEGRATION • SECURITY • WINDOWS

For expert assistance, contact **Robert Weiner, P.E.**, at:
Tel: (718) 648-6902 Email: info@progplus.com
Fax: (718) 648-7449 Web: www.progplus.com

BODNER & O'ROURKE, LLP
PATENTS, TRADEMARKS, COPYRIGHTS & RELATED MATTERS

GERALD T. BODNER
PATENT ATTORNEY

425 BROADHOLLOW ROAD, SUITE 120
MELVILLE, NEW YORK 11747
TEL. 631-249-7500 FAX 631-249-4508
gbodner@bodnerorourke.com



IEEE

Be sure to visit our web Blog at:
http://licn.typepad.com/my_weblog/

**IEEE Consultants Network
of Long Island**

PO Box 411, Malverne, NY 11565-0411

<http://licn.org/>

(516) 379-1678

Affiliated with the Institute of Electrical
and Electronics Engineers, Inc.



IEEE

IEEE LONG ISLAND SECTION

The Pulse of Long Island is produced by the **Long Island Section** of the **Institute of Electrical & Electronic Engineers**.
It is published monthly except July and August.

Nikolaos Golas, *Editor*
pulse@IEEE.LI

Anthony Giresi, *Graphic Designer*
pulse@IEEE.LI

Pulse Advertising Rates

Full Page.....	\$850.00 per issue
Half Page.....	\$550.00 per issue
1/4 Page.....	\$380.00 per issue
Business Card.....	\$130.00 per issue

- *Ads in full color at no premium.*
- *10% discount of 10-time advertisers*
- *Advertising deadline 15th of the preceding month.*
- *Editorial deadline 1st of the month*

Let Us Hear From You

The **PULSE** encourages letters to the editor. Members of the IEEE Long Island Section are encouraged to write in about PULSE articles or about other topics of interest to Long Island Engineers. While the IEEE Long Island Section greatly appreciates feedback, we cannot guarantee that all letters will be answered or published. Please direct comments to pulse@IEEE.LI or to a Section officer.

The opinions expressed in this newsletter are those of the authors, and no endorsement by the Institute, its officials, or its members is implied. IEEE prohibits discrimination, harassment and bullying. For more information, visit: www.ieee.org/web/aboutus/whatis/policies/p9-26.html



INSTITUTE OF ELECTRICAL and ELECTRONICS ENGINEERS

445 Hoes Lane
Piscataway, NJ 08855-1331

Phone: 1-800-678-4333 (USA & Canada)

Phone: 1-732-981-0060 (Worldwide)

Website: www.ieee.org

E-mail: contactcenter@ieee.org