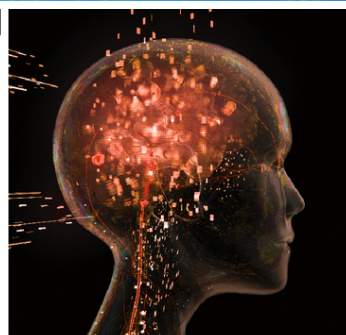


VOLUME 61, NO. 10

DECEMBER 2014

THE PULSE

OF LONG ISLAND



Inside This Issue

- ❖ December 2014 / January 2015 Calendar of Events | **4**
- ❖ Long Island's Electronic History | **5**
- ❖ 2015 IEEE Long Island Section Officers | **6**
- ❖ Feature Article: *How To Become A Senior Member* | **7-8**
- ❖ December 2014 / January 2015 Lectures and Seminars | **9**
- ❖ IEEE LI Section Membership: *Life Members, New Members and Membership Renewal* | **10-12**
- ❖ Job Offerings | **14-15**
- ❖ 2014/2015 Conferences | **16-19**



My term as the **IEEE Long Island Section** Chair is coming to an end, and this is my last **Chairman's Message** for the *Pulse*. I would like to thank everyone for the opportunity to serve in this position, and look forward to continuing my participation with the Section activities in other roles.

The **IEEE Long Island Section** is large and active – we have **17 Society Chapters**, as well as a healthy **Consultants Network**, and active **Life Members** and **Women in Engineering Affinity Groups**. We also have a multitude of Committees that serve the needs and goals of the Section including the **Educational Activities Committee, Employee Assistance Committee, Awards Committee, Professional Activities Committees for Engineers (PACE)** and the **Student Activities Committee**.

Between January and the end of November the Section, Society Chapters and Committees have held close to 90 lectures, presentations, and meetings which are effective methods for transferring information, and we are not yet done for the year!

In September of this year, the Section dedicated our second **IEEE Historic Milestone** at the **Cradle of Aviation Museum** in Garden City, - the **First Blind Takeoff, Flight and Landing**. That effort spanned several years and included sponsorship from our sister organization, the **AIAA (American Institute of Aeronautics and Astronautics) Long Island Section**.

We hosted and/or co-sponsored five conferences this year:

- The **Engineers' Week Seminar Series** as part of the Engineers Joint Council of Long Island (EJCLI),
- The **Tenth Annual Long Island Systems, Applications and Technology (LISAT 2014)** Conference at Farmingdale State College,
- The **International Energy and Sustainability Conference (IESC 2014)** at Farmingdale State College,
- The **New North East Battery Conference (NewNEB)** in Ronkonkoma NY
- The **Center for Excellence in Wireless and Information Technology (CEWIT 2014)** in Melville NY.

Many of our members are closely involved in the planning process and delivery of these Conferences and events; their efforts run year round, with the planning of the next year's Conference beginning right after the close of the last.

The **Long Island PACE Committee** held a series of financial planning seminars, and organized a trip to the **New York Maker Faire**. They also teamed with the **Cradle of Aviation Museum** to co-sponsor events covering their **Legends of Air Space Speaker Series**.

The Section sent four representatives to the **IEEE Sections Congress (SC 2014)** in Amsterdam, Netherlands. The Long Island Section, along with every IEEE Section throughout the world, was invited to submit suggestions to be voted on at the Sections Congress – we submitted four. Of the many hundreds of submitted suggestions, two of the Long Island Section suggestions were chosen to be on the final list of 34 put forth to the Congress for their vote.

We continued our support of the **FIRST Robotics** program through the School and Business Partnership of Long Island (SBPLI), increasing our contribution to the program. Many of our members also support the program at the local school level, and volunteer at the events. We also increased our support of the local IEEE Student Chapters and the **IEEE Eta Kappa Nu Honor Society**.

All these activities are due to the efforts of our Members, Section Officers, Committee and Affinity Group Chairs and Co-Chairs. I would like to take this final opportunity as Section Chairman to thank them all for their dedication and efforts- without their efforts the Long Island Section would not would not be the success it is.

I would also like to congratulate the **2015 Long Island Section Officers**:

- **Chairman: John Vodopia**
- **1st Vice Chair: M. Nazrul Islam**
- **2nd Vice Chair: Lou D'Onofrio**
- **Treasurer: Santo Mazzola**
- **Secretary: Marjaneh Issapour**

The Section members have again picked an outstanding group of Officers to lead the Long Island Section!

The final 2014 Executive Committee meeting is Monday, December 8th at Telephonics in Farmingdale. The meeting is open to all members– just send me an email at chairman@IEEE.LI and I will add your name to the attendance list. Please join us!

John G. Schmidt
Chairman, IEEE Long Island Section
chairman@IEEE.LI

IEEE Long Island Section Officers

*CHAIRMAN***JOHN SCHMIDT**

Office: 516- 859-1679

chairman@IEEE.LI*FIRST VICE CHAIR***JOHN VODOPIA**

Office: 631-673-7555

EXT. 128

1vc@IEEE.LI*SECOND VICE CHAIR***M. NAZRUL ISLAM**

Office: 631-546-2464

2vc@IEEE.LI*TREASURER***METODI FILIPOV**

Office: 631-882-5992

treasurer@IEEE.LI*SECRETARY***LOU D'ONOFRIO**secretary@IEEE.LI*JUNIOR PAST CHAIR***THOMAS LANZISERO***SENIOR PAST CHAIR***SUSAN FRANK**

Affinity Groups

*YOUNG PROFESSIONALS***ADAM CHALSON**

631-755-7344

gold@IEEE.LI*LIFE MEMBERS AFFINITY GROUP***VICTOR ZOURIDES**life@IEEE.LI*STUDENT DEVELOPMENT / ACTIVITIES***NEIL RAMOS**student@IEEE.LI*WOMEN IN ENGINEERING (WIE)***MIHAELA RADU**wie@IEEE.LI

The IEEE Long Island Section Website

The IEEE LI Section website is update regularly to reflect recent section activity and upcoming events. Each Society and Affinity Group has a dedicated page which describes their function and includes contact information.

Visit our site at: www.IEEE.LI

Consultant's Network of Long Island

The Consultant's Network of Long Island maintains a referral service of engineering, computer, managerial & technical professionals. For more information, please visit their website at:

www.consult-li.com

Membership Development

For more information on membership with the Long Island Section of the IEEE, e-mail Nikolaos Golas at:

membership@IEEE.LI



DECEMBER 2014

December 3, Wednesday

Long Island Consultants Network Meeting

Briarcliffe College

The Great Room

Bethpage, LI

7:00 PM - Meeting

December 4, Thursday

Instrumentation and Measurement Society Meeting

Telephonics

Farmingdale, LI

6:00 PM - Refreshments

6:30 PM - Lecture

December 8, Monday

EXCOM Meeting

Telephonics

Farmingdale, LI

5:45 PM - Dinner

6:15 PM - Meeting

For more information about these meetings and lectures, please visit:

www.IEEE.LI/calendar



JANUARY 2015

January 8, 2015 Thursday

AIAA/IEEE (AES) Joint Section Meeting

Critical Need for Testing

New Space Systems:

Have We Lost Our Testing Heritage?

By Joe Neiberding

Bethpage Public Library

Bethpage, NY

6:00 PM - Social Time

6:30 PM - Pizza

7:00 PM - Presentation





Long Island's Electrical and Electronic History

By Jesse Taub, IEEE Long Island Section Historian

We continue to peruse old issues of *The Pulse* to get a picture of our Section's past activities. Previous articles have covered the 1950's and ended in 1960. Most of *The Pulse* issues from the 60's and 70's have yet to be posted. We will therefore skip two decades and start to examine the 1980's. We will get back to the 60's and 70's when they get posted.

The September 1981 *Pulse* announced a section meeting featuring a talk, "Surface Acoustic Wave Signal Processing in a Digital Age". The speaker was Dr. Williamson of MIT Lincoln Laboratory. Surface Acoustic Wave (SAW) analog devices such as dispersive delay lines and convolvers were described that had much more signal processing power than could be done with digital techniques at that time. Since then, increased digital processing speeds have somewhat reduced SAW technology's advantage.

This issue also announced three candidates for Region 1 Director. Two candidates were Alex Gruenwald and Joel Snyder were local to our area. One of our Section Awards is named for Alex and Joel, a former Section Chair, went on to be an IEEE President.

The October 1981 meeting featured a talk by Robert Riggs of Sperry on "Collision Avoidance – Use of Computers to Aid in Ship Navigation". Other talks that were sponsored by the Antennas and Propagation groups were on electronically steered cylindrical antennas and adaptive super resolution technology.

The featured talk for the November Section Meeting was entitled, "From the Giant – A Small Personal Computer". The speaker was Jack Mawe of IBM. This was one of the first PC's that was on the market. It was well before Microsoft offered its first operating system. Its permanent memory was only 40 kilobits. Another article was on the role of the IEEE in political action. Many Long Island members were active in this area. One of them, Robert Bruce, was mentioned.

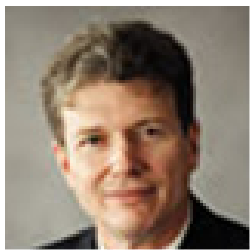
The December meeting featured a talk on "The Human Interface". The speaker pointed out that the design of this interface had a significant effect on system performance. December marked the 80th anniversary of Marconi's successful transatlantic radio transmission; a meeting was held to commemorate this event. The Section announced a planned tour to the LILCO Electrical Control Center in Hicksville. It reminds us of the subsequent name changes to LIPA and now PSEG.

These *Pulse* issues from the early 80's highlighted early work in areas that we now take for granted such as high speed digital signal processing and the PC. It was also the early days of political action by IEEE members.

Once again, I wish to thank Rod Lowman, our former Historian, for saving all of the old *Pulse* issues and James Colotti for making many of them available.

2015 IEEE LONG ISLAND SECTION OFFICERS

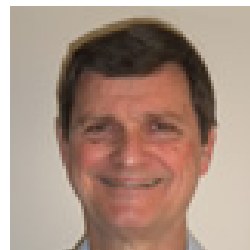
The IEEE Long Island members elected new officers that would be leading and serving the Section and our members in 2015. Congratulations are in order to: John Vodopia, Chairman, M. Nazrul Islam, First Vice Chairman, Lou D'Onofrio, Second Vice Chairman, Marjaneh Issapour, Secretary and Santo Mazzola, Treasurer. Get to know your new officers by attending the next Executive Committee (ExCom) meeting. If you are interested in attending the ExCom meeting or if you would like to volunteer contact the Section Chairman at: chairman@IEEE.LI



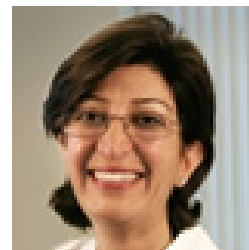
John Vodopia,
Chairman



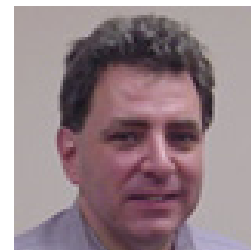
M. Nazrul Islam,
First Vice Chairman



Lou D'Onofrio,
Second Vice Chairman



Marjaneh Issapour,
Secretary



Santo Mazzola,
Treasurer

2014 IEEE ANNUAL ELECTION RESULTS

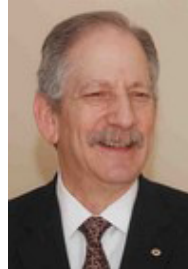
IEEE MEMBERS SELECT BARRY L. SHOOP AS 2015 IEEE PRESIDENT-ELECT



Barry L. Shoop, U.S. Military Academy, West Point, New York, USA has been selected as 2015 IEEE President-Elect. Pending acceptance of the Teller's Committee report by the IEEE Board of Directors on 23-24 November, Shoop will begin serving as IEEE president on 1 January 2016. He will succeed 2015 IEEE President Howard E. Michel, HEM Consulting, Dartmouth, Massachusetts, USA. The other candidates for 2015 IEEE President-Elect were Tariq S. Durrani, University of Strathclyde, Glasgow, United Kingdom (nominated by Petition) and Frederick C. Mintzer, IBM (retired), Yorktown Heights, New York, USA (nominated by IEEE Board of Directors). Of the members who voted, 15,972 selected Barry L. Shoop, 14,831 selected Tariq S. Durrani, and 14,056 selected Frederick C. Mintzer. Barry was the IEEE Region 1 Director (Northeast US) in 2006-2007.

We wish Barry L. Shoop and Peter Alan Eckstein good luck since their election to their position is a three year commitment; one year as President-Elect; one year as President; and one year as Past President. The IEEE President, President-Elect and Past President also serve as members of the IEEE Board of Directors, the governing body of IEEE. The IEEE-USA President also serves as a member of the IEEE Board of Directors. The IEEE-USA President is responsible for advancing policies and implementing programs designed to serve and benefit the members, STEM professionals, and general public in the United States and for representing the professional interests of the IEEE before U.S. governmental bodies.

IEEE MEMBERS SELECT PETER ALAN ECKSTEIN AS 2015 IEEE-USA PRESIDENT-ELECT



Senior Member Peter Alan Eckstein a retired Senior Principal Engineer at Northrop Grumman Corporation; Adjunct Professor Suffolk County Community College, Queensborough Community College and United States Merchant Marine Academy has been selected as the 2015 IEEE-USA President-Elect. Pending acceptance of the Teller's Committee report by the IEEE Board of Directors on 23-24 November, Eckstein will begin serving as IEEE president on 1 January 2016 and he will succeed 2015 IEEE-USA President James A. Jefferies. Of the members who voted, 11,680 selected Peter Alan Eckstein (Nominated by IEEE-USA) and 8,624 selected Keith D. Grzelak (Nominated by IEEE-USA). Peter is a Long Island Section member and was the IEEE Region 1 Director (Northeast US) in 2012-2013.



HOW TO BECOME A SENIOR MEMBER

Sandy Mazzola, Region 1 IEEE Admissions and Advancement Representative

ACHIEVING SENIOR MEMBERSHIP: DEMYSTIFYING THE SIGNIFICANT PERFORMANCE REQUIREMENT

In the April 2014 issue of RegiOne, the Region 1 chapters coordinator Dr. Ilir Proгри, SM wrote an excellent article on the Senior Member elevation process. Senior Member grade is the highest IEEE grade for which IEEE members can self nominate, or be nominated. Senior Members of the IEEE enjoy the professional recognition by their peers for their technical and professional excellence. Senior Members are eligible to hold executive IEEE volunteer positions. This article focuses on demystifying the requirements and the process of achieving senior membership without repeating the fine information that Proгри presented.

The Senior Membership requirements include 10+ years of experience, a demonstration of 5+ years of significant performance and references supplied by 3 Senior or Fellow members (2 references if your Section is nominating you) . In his article Proгри showed how to find references within your Section and presented all of the terrific reasons for becoming a Senior Member. This article covers the meaning of significant performance, how to cite it and provide examples as a guidance.

PERFORMANCES CONSIDERED SIGNIFICANT TO MEET THE REQUIREMENTS FOR SENIOR MEMBERSHIP ARE:

1. Team leader, supervisor or program manager
2. Substantial engineering, responsibility or achievement
3. Technical direction or management of important scientific or engineering work with evidence of accomplishment
4. Research papers, search oriented course, tutorials
5. Substantial design work
6. Publications of technical papers, books, or inventions
7. Recognized contributions to the welfare of technical professions
8. Development or furtherance of important technical courses that fall within the IEEE designated fields of interest
9. Contributions as Technical Editing, Patent Prosecution and Patent Law to advance progress in the IEEE-designated fields
10. Professional awards and licenses
11. Teaching , Research, Industry, Practitioners, Consultants and Entrepreneurs
12. Significant contributions to Standards development

CONTINUED ON PAGE 8 ►

HOW TO BECOME A SENIOR MEMBER: DEMYSTIFYING THE SIGNIFICANT PERFORMANCE REQUIREMENT

◀ CONTINUED FROM PAGE 7

TWO EXAMPLES ON ABOUT SIGNIFICANT PERFORMANCE FOR THE AREA OF TEACHING ARE DESCRIBED BELOW.

TEACHING:

Performing research with some measure of success, publishing in high level recognized journals, publication of technical papers, books or inventions/patents (in the final version the teaching-related skills should go first), departmental chair, supervision of successful PHD students, undergraduate teachers demonstrating excellence and dedication that might result in exceptional student accomplishment, including coaching in LEGO league or Robotics (teachers who are engineers and computer scientists).

ENGINEERING:

Engineering analysis, engineering test, engineering design, troubleshooting, engineering process management, quality control, technical sales, sales engineering, etc. are recognized as valid skills for senior membership.

The list above is not all-inclusive. It should be used only as a guideline. The examples cited here not the only ones that demonstrate the areas of significant performance. If you think your experience warrants significant performance and doesn't exactly fall within these categories do not be daunted, present it and your past and present performance will be evaluated by the IEEE and very well may be considered significant performance. In that vein, do not be disheartened if your application does not pass the first time through. Have the application reviewed and find out where the application came up short and where it can be beefed up to meet the requirements of Senior Membership grade.

MEMBERSHIP QUALIFICATIONS PERTAINING TO IEEE DESIGNATED FIELDS INCLUDE:

- Engineering
- Computer Science & Information
- Physical Sciences
- Biological & Medical Sciences
- Mathematics
- Technical Communications
- Education
- Management
- Law & Policy

SENIOR MEMBERSHIP

Benefits are extremely helpful to one's career. To achieve senior membership the successful applicant will be able to demonstrate 5+ years of significant performance. This article discussed some examples of significant performance. While the requirements for significant performance are stringent, they are not unreachable, take a look at your work achievements and you will realize that you can apply successfully for senior membership. If you have any questions about the Senior Member requirements please contact me directly at mazzolas@ieee.org or check the [IEEE Senior Member Grade Portal: http://www.ieee.org/membership_services/membership/senior/index.html](http://www.ieee.org/membership_services/membership/senior/index.html) If you have any questions regarding assistance in the application process or obtaining references you should contact your Section Chair for assistance.

In the words of many Rob Schneider characters from many Adam Sandler movies: "You Can Do It."



AIAA / IEEE(AES) JOINT SECTION MEETING

"CRITICAL NEED FOR TESTING NEW SPACE SYSTEMS" HAVE WE LOST OUR TESTING HERITAGE?



DATE:
Thursday, January 8, 2015

PRESENTED BY:
Joe Nieberding
President,
*Aerospace
Engineering Associates*

LOCATION:
Bethpage Public Library
47 Powell Avenue,
Bethpage, NY, 11714

TIME:
6:00 PM - Social Time
6:30 PM - Pizza
7:00 PM - Presentation



The purpose of this presentation is to renew awareness of the critical need to rigorously test new space systems before flight, and to counter the trend to reduce such testing. There is a real concern that we have lost our testing heritage, our culture of testing. Examples of comprehensive Centaur, Space Shuttle Main Engine, and Apollo testing are discussed. The role of testing "screens" in the overall design verification process is also discussed, as well as why these screens are frequently ineffective. Several factors contribute to ineffective screens. Among them are tests that were never incorporated into the test plan, tests that were improperly performed, or flawed simulation in lieu of testing. Three actual NASA historic flight failures are discussed, and why the testing was ineffective in each case. Mr. Nieberding concludes that programs that adopt a minimalist approach to testing are betting on the ability of the engineering community to foresee all aspects of system performance under all conditions. But history has shown that is a very risky bet!

After earning a B.S. in physics and an M.S. in Engineering Science, Mr. Nieberding has acquired over 48 years of management and technical experience in the aerospace industry. He is a widely recognized expert in launch vehicles and advanced transportation architecture planning for space missions. He was a launch team member on over 65 NASA Atlas/Centaur and Titan/Centaur launches at Kennedy Space Center. He led and participated in many independent program review teams for NASA Headquarters. While at NASA, the Advanced Space Analysis Office under his direction led all exploration advanced concept studies for the Glenn Research Center, including transportation, propulsion, power, and communications systems for many advanced NASA mission applications. Since retirement in 2000, he has held numerous consulting positions for NASA and other government agencies. In addition, Mr. Nieberding is co-founder and President of Aerospace Engineering Associates.

RESERVATIONS REQUESTED RSVP BY

January 7, 2015 to: David Paris at:

davidsparis@optonline.net or (516) 458-8593

Directions: The library is west of Route 135 in Bethpage. Take Route 135 to Exit 8, then West on Powell Ave. for about 0.25 miles. The library is on the south side of the street. Park across Powell Ave., opposite the library.

IEEE LONG ISLAND SECTION LIFE MEMBERS

YOUR SECTION NEEDS YOU

To paraphrase a famous expression ... "Ask Not What Your IEEE Long Island Section Can Do for You, Ask What Can You Do for the Long Island Section" ...

Life Members have so much to offer and in so doing leave a continual legacy. You have served your profession; many have served our country in the military, many as engineers fighting the Cold War. The many contributions are the legacy to this new digital age, space age, environmental age and beyond. Your Section, the IEEE Long Island Section wants to hear from you and also ask for your help and participation.

Let us know your story. Our monthly periodical, the *Pulse* of Long Island will publish letters, essays, criticisms, concerns, kudos, etc. (with the Editor's approval for content) those deemed pertinent to the story of our profession. Details for reaching the Editor are shown at the end of the article.

In addition, as the opening remarks indicate, we need your help where and when possible. As you all are aware, our country and profession is in direct need to uplift our youth to the value of technology.

This is not a call to produce more engineers. They will come as the need arises. This is as stated to awaken the youth to the contributions of engineers and engineering. It is amazing that virtually every device, vehicle, instrument, etc. in the world is the result of the mind and expertise of engineering efforts. Yet our youth is ignorant of these contributions.

An effort to alleviate this situation is via a nationwide effort called STEM, an acronym for Science, Technology, Engineering and Math. The Long Island Section has presented several meetings on STEM to increase awareness to our members. We need volunteers to help in this effort. Try to open the minds of our youth to the importance of all the STEM subjects and have them strive to be proficient in these subjects.

Several avenues where Life Members can be involved are as follows: Robotics, Micro Mouse Competition, Student Conferences, Career Academies, Lectures Mentoring and physical material like a piece of waveguide, components, sub-assembly, model, etc. that can be presented for display at a Conference or Student Presentation.

Please contact me, your Life Member Affinity Group Chairman at:

vgzourides@ieee.org.

Contact the Pulse Newsletter Editor at:

pulse@IEEE.LI

Please try to get involved in our activities as it will make you feel happier to know that you are caring for the Long Island youth. We cannot run them without your help and support.



 **IEEE**
Advancing Technology
for Humanity

ieee.org

IEEE NEW MEMBER WELCOME

THE LONG ISLAND SECTION WOULD LIKE TO WELCOME THE FOLLOWING NEW MEMBERS FOR 2014!

Constance Cooper

Steven Henry

Jonathan Robert Kelly

Humberto Lockward

Chinmay Nanda

Danny Javier Ventura

Timothy Whitted



would like to thank for it's support:



BODNER & O'ROURKE, LLP
PATENTS, TRADEMARKS, COPYRIGHTS

GERALD T. BODNER
PATENT ATTORNEY

(formerly an electrical engineer with AIL Systems, now ITT)

425 BROADHOLLOW ROAD, SUITE 120
MELVILLE, NEW YORK 11747
TEL. 631-249-7500 FAX 631-249-4508
gbodner@bodnerorourke.com

TIME TO RENEW YOUR 2015 IEEE MEMBERSHIP

Nikolaos Golas, *Membership Development
Chair IEEE Long Island Section*

***It's time for IEEE Long Island Section members to renew your 2015 membership.
DON'T MISS OUT ON YOUR MEMBERSHIP BENEFITS.***

THE 2015 MEMBERSHIP YEAR HAS BEGUN, AND YOU CAN RENEW YOUR IEEE MEMBERSHIP ONLINE AT ANY TIME FOR CONTINUED ACCESS TO:

- Discounts on continuing education, products and services such as Term life Insurance and the lowest available prices on products from Rosetta Stone, Lenovo, Dell, and HP
- The award-winning *IEEE Spectrum* magazine
- Career Resources such as **MentorCentre** and the **IEEE JobSite**
- Worldwide resources and contacts through IEEE's network of more than **400,000** professionals & students
- **memberNet™**, IEEE's exclusive online directory connecting members by technical interest around the world
- Discounted access to **IEEE Xplore**



MEMBERSHIP IN IEEE GIVES YOU TARGETED TOOLS TO ADVANCE YOUR ENGINEERING AND TECHNOLOGY CAREER, INCLUDING:

- Job Placement
- Networking Opportunities
- Technical Publications that Keep Skills Current

IN ADDITION, MEMBERS ARE ENTITLED TO EXCLUSIVE DISCOUNTS ON PRODUCTS AND SERVICES, SUCH AS:

- Cost of Obtaining Needed Certifications
- Conducting Research
- Continuing-Education Classes
- Savings on Financial Products Including:
Insurance, Office Products, and Moving Services

View the many other benefits of IEEE Membership. If you do not remember your password, you can retrieve it online.

As part of its commitment to technology professionals, IEEE sponsors a wide range of insurance plans through the **IEEE Member Group Insurance Program**. Each plan delivers good value with attractive group rates, quality benefits and solid protection. No matter where you currently stand in your career, the IEEE Member Group Insurance Program can help round out your benefit picture. For more information, visit IEEEinsurance.com.

If you have any questions or comments about your membership send your inquiry to the **IEEE Contact Center**. If you already renewed we thank you for being a loyal member and for your commitment to the profession.

TELEPHONICS AWARDED CONTRACT TO SUPPLY AN/UPX-44 IFF INTERROGATOR SYSTEMS FOR SWEDISH LORADS & VISBY PROGRAMS

Telephonics Corporation has received a contract from the U.S. Foreign Military Sales Office, acting as procuring agent for the Swedish government. The 30-month contract includes 20 AN/UPX-44 Identification Friend or Foe (IFF) interrogators, with 13 systems to be installed on Sweden's Long Range Radar and Display System (LORADS) and 7 on the country's Navy Visby-class Corvette ships. Telephonics will also provide in-country integration support and operational training for both platform crews by August 2016.

Designed and manufactured at Telephonics' Long Island, New York facilities, the Mark XII/A, All-Mode AN/UPX-44 IFF interrogator will enable the Swedish military to identify aircraft, vehicles or forces as friendly while determining the bearing and range of their location. The system is DoD AIMS certified with the latest Mode S capability upgrades, ensuring compatibility and interoperability with Swedish armed forces as well as civilian airspace systems. The AN/UPX-44 IFF interrogator is DoD AIMS certified.

"The AN/UPX-44's versatility will allow Sweden to utilize the same platform across their different military disciplines, leading to enhanced operator knowledge during aircraft, vehicle or force identification."



"Telephonics is extremely pleased to be selected for these critical defense programs, effectively helping to secure, manage and monitor airspace, water as well as land borders around Sweden."

Joseph J. Battaglia
*President and Chief Executive
Officer of Telephonics.*



1. SOFTWARE ENGINEER - AEROSPACE / MANUFACTURING

Our client is a \$5.5 billion world leader in command, control, communications, computers, intelligence, surveillance & reconnaissance. We have a need for a professional to join the ranks of our 20,000 employees serving customers around the globe.

As a key member of our Electronic Systems Division, you will oversee the day-to-day tactical functions for assigned programs, including the coordination of all cost/schedule/technical aspects of ongoing projects, ensuring all established program guidelines are followed.

Responsibilities will include:

- Perform under relatively modest supervision the analysis of moderately complex Software components for subsystems and systems.
- Develop SW designs for moderately complex SW components from requirement specifications.
- Implement SW designs from design specifications.
- Perform unit testing and SW Integration testing of SW components.
- Aid in system testing of SW applications.
- Performing other related functions as needed.

2. SENIOR SOFTWARE ENGINEER - AEROSPACE / MANUFACTURING

Our client is a \$5.5 billion world leader in command, control, communications, computers, intelligence, surveillance & reconnaissance. We have a need for a professional to join the ranks of our 20,000 employees serving customers around the globe.

As a key member of our Electronic Systems Division, you will oversee the day-to-day tactical functions for assigned programs, including the coordination of all cost/schedule/technical aspects of ongoing projects, ensuring all established program guidelines are followed.

Responsibilities will include:

- Serve as a professional authority in analysis and design of Software solutions for complex subsystems and systems.
- Lead design efforts for a subsystem. Collaborate in preliminary and advanced design studies for system designs.
- Aids in establishing system philosophy and design objectives and conceives and develops solutions to analytical, design and test problems.
- Developing SW solutions to meet productivity, quality and customer satisfaction goals and objectives.
- Provide technical direction to individual SW engineers assigned to project.
- Managing SW schedules and preparing status reports.
- Prepare and present key sections of technical briefings.
- Ensuring all engineering projects are completed on schedule.
- Developing and implementing recovery plans for off-schedule and unanticipated events

3. SENIOR SYSTEMS ENGINEER - AEROSPACE/MANUFACTURING

Our client is a \$5.5 billion world leader in command, control, communications, computers, intelligence, surveillance and reconnaissance. We have a need for a professional to join the ranks of our 20,000 employees serving customers around the globe.

As a key member of our Electronic Systems Division, you will oversee the day-to-day tactical functions for assigned programs, including the coordination of all cost/schedule/technical aspects of ongoing projects, ensuring all established program guidelines are followed.

Responsibilities will include:

- Serving as a single point of contact between engineering, project management & planning, engineering project team, & line management
- Develop new innovative system level concepts
- Research & develop complex EW systems designs & architectures
- Develop signal processing techniques
- Support system and subsystem level integration and test
- Support business development
- Reviewing status and budgets of engineering projects
- Managing schedules and preparing status reports
- Conducting performance/project analyses
- Providing direction to program team members

4. HARDWARE ENGINEERS, FULL TIME AEROSPACE

Seeking Digital Design Engineers, (experienced at the chip level), for full time employment at a \$5.5 billion global Aerospace company. Our client is a diversified, top-tier defense, information and services company in search of Digital Engineers with a BSEE or MSEE and 7+ years' experience designing military applications. Contact us and join a dynamic engineering team for a challenging opportunity that will impact our country's defense systems and military capabilities. No job shoppers please – this is a permanent position.

Responsibilities will include:

- Strong digital logic design with VHDL coding and high speed digital design skills
- Experience working in the Xilinx ISE design environment with ModelSim
- Experience working with DSP, A/D and D/A converters
- Ability to develop test benches and conduct timing analysis
- Familiarity with embedded processing, the Virtex ISE platform & hardware communication over a high speed PCI/cPCI/VME interface are a plus
- Working knowledge of standard bench test equipment
- Ability to conduct hardware verification and debugging
- Methodical and detail oriented approach to problem solving as well as excellent written and oral communication skills
- Ability to obtain Security Clearance
- Experience in project planning and estimating is a plus

Note: These jobs have Secondary Duties, Job Qualifications, Education, Experience and Skills requirements which can be checked online at the Executive Alliance Career Opportunities Page. Tell David that you saw the job opportunity published in the Pulse newsletter of the IEEE Long Island Section. All replies confidential.

David Blum, Senior Recruiter, Executive Alliance, Office 631-493-0574 ext. 104, Fax: 631-493-1365, david@execsallied.com www.execsallied.com

Email resume to: david@execsallied.com.



5. JUNIOR QUALITY ASSURANCE ENGINEER

World leader in the design and manufacture of high-reliability data bus, motion control and solid-state power controller products for aerospace / manufacturing is seeking a Jr. Quality Assurance Engineer.

Primary/Essential Duties:

- Dispositions nonconforming material & implements corrective action.
- Establishes and maintains quality assurance procedures from customer, military, and industrial specifications
- Interface with customer/government source inspectors.
- Review customer contracts for quality requirements.
- Review and approve internal engineering changes, manufacturing procedures and applicable quality documentation.
- Maintains supplier quality programs.
- Organizes and monitors all space products and qualification / environmental testing.
- Perform internal and external supplier audits, including AS9100 Surveillance Audit of all manufacturing locations.
- Develop new approaches to solving problems identified during quality assurance activities.

6. QA SOFTWARE ENGINEER

World leader in the design and manufacture of high-reliability data bus, motion control and solid-state power controller products for aerospace / manufacturing is seeking a QA Software Engineer.

Primary/Essential Duties:

- Work with Software Engineering to evolve processes and procedures to improve Quality of new software.
- Update / enhance existing software quality assurance audit procedures for consistency with software engineering procedural requirements.
- Participate in technical reviews, meetings and discussions with software engineering and other technical disciplines to ensure that:
 - Software requirements are accurately and completely defined and documented for new products.
 - Software design documentation is sufficiently detailed for user needs
 - Coding complies with coding standards.
 - Software product testing is documented, controlled, and adequately verifies the design requirements.
 - Any open issues are resolved prior to software package releases.
- Work with Software Engineering and Hardware Engineering to define and document procedures for firmware development, test, control and release processes.

7. SENIOR TEST ENGINEER - ELECTRONIC COMPONENTS FOR MILITARY & AEROSPACE

World leader in the design and manufacture of high-reliability data bus, motion control and solid-state power controller products for aerospace / manufacturing is seeking a Senior Test Engineer.

Primary/Essential Duties:

- **Leadership:** Provide technical leadership role within the Test Engineering department to solve technical challenges or problems or to bring new technical capability to our Test Engineering department.
- **Design:** Perform original and innovative automatic and manual test hardware and software design that allows for future development and growth.
- **Optimize:** Develop creative approaches that favorably optimize design tradeoffs for various elements of a design such as test system cost, performance, feature set, time to implementation and technical risk.

Test System Specifications: Implement innovative approaches and develop clearly written design specifications and procedures that ensure all test equipment is designed meet the needs of the users relative to their technical performance, feature set, cost and time to implementation goals.

- **Product Specifications:** Contribute technical input to product specifications to ensure the product design includes specifications and features that facilitate efficient and effective testability of the product.
- **Planning:** Develop plans, schedules, and identify resources required to develop test systems for production requirements and design engineering evaluations. Identify risk areas and develop contingency plans to eliminate or mitigate risk that could result in schedule delays or failure to meet specification or design plan requirements.
- **Innovation:** Conceive methods for achieving test system requirements and specifications using appropriate circuit design, process, manufacturing, mechanical and software techniques. Anticipate possible difficulties and develop alternate methods. Research new equipment, methods and techniques and implement changes to improve our products cost competitiveness by minimizing labor and expense for products in production.
- **Win New Business:** Contribute technical input to proposals, as well as material and labor cost estimates in support of winning new tactical business opportunities.
- **Education:** Mentor, coach, direct and train less senior engineers and technicians in order to facilitate their ability to progress to higher levels of technical and professional achievement.
- **Analysis:** Perform failure analysis investigations on both in house and customer returned products. Provide feedback and/or specific recommendations to appropriate Engineering, Quality, Customer Service and/or Manufacturing disciplines when appropriate to facilitate product improvement or avoid future failures or returns.

8. SALES ENGINEER

Technical Sales – Global Long Island Company will train recent Engineering Graduate for a Career in Outside Sales!

One of Long Island's finest global companies (\$3 billion in revenue) is seeking an individual with a four year degree and 1-2 years of experience in a sales related role for a highly visible training opportunity and fast track growth to Outside Sales Account Manager.

Work with the leading worldwide supplier of automation technology! We pride ourselves on our innovative design solutions and leading edge technology.

We are seeking an Office Based Sales Engineer for our Long Island office. The ideal candidate will provide market and technical support to distributors and direct customers as a way of gaining experience for future promotion to the position of Outside Sales Employee. This program is designed as a self-guided training that is supported by product and sales management in addition to other departments.

Duties of this job include:

- Perform sales activities for all products and services with customers, prospects and resellers
- Analyze and research pertinent information in order to respond to inquiries regarding product features and performance, product application, product substitution and special application requests
- Provide technical support to troubleshoot problems & system failures
- Provide sales order information, delivery, date, price, product substitution and stock availability
- Process customer returns
- Investigate customer requirements and provides background information to the corporate engineering department for special application requests
- Ability to relocate in approximately 12 to 18 months to a specific territory

Note: These jobs have Secondary Duties, Job Qualifications, Education, Experience and Skills requirements which can be checked online at the Executive Alliance Career Opportunities Page. [Tell David that you saw the job opportunity published in the Pulse newsletter of the IEEE Long Island Section.](#) All replies confidential.

David Blum, Senior Recruiter, Executive Alliance, Office 631-493-0574 ext. 104, Fax: 631-493-1365, david@excscallied.com www.excscallied.com

Email resume to: david@excscallied.com.





FRIDAY, MAY 1, 2015

LISAT 2015

Eleventh Annual IEEE Long Island Systems, Applications and Technology Conference

HELD AT THE FARMINGDALE STATE COLLEGE OF THE STATE UNIVERSITY OF NEW YORK, FARMINGDALE, NY

CALL FOR PAPERS, PRESENTATIONS, EXHIBITORS and STUDENT PAPERS

The Long Island Systems, Applications and Technology (LISAT) Conference features several parallel professional tracks including topics in systems, applications, and technology; a PDH program and an Exhibition. We are soliciting submissions for participation in both the technical program, applications program, and the exhibition, and are interested in papers, presentations, and exhibits that showcase the development and use of technology by local organizations. LISAT 2015 will also provide the opportunity for select student papers to be presented. Undergraduate and graduate students are encouraged to submit papers in an area of their interest or current work.

Authors shall be required to provide a six (6) page IEEE standard manuscript for publication in IEEE Xplore, and will be required to make a Power Point TM presentation at the conference. Manuscripts are subject to the LISAT Technical Program Committee's peer review and may require revision prior to final acceptance. Important dates for the Technical Program are:

LISAT 2015 IMPORTANT DATES	
MANUSCRIPTS FOR PUBLICATION AND COPYRIGHT RELEASES DUE	MARCH 27, 2015
NOTIFICATION OF ACCEPTANCE OF MANUSCRIPTS (SUBJECT TO FINAL EDITS)	APRIL 10, 2015
PRESENTER REGISTRATION	APRIL 17, 2015
FINAL MANUSCRIPT EDITS, BIOS, AND POWER POINT DUE	APRIL 17, 2015
LISAT2015 CONFERENCE	MAY 1, 2015

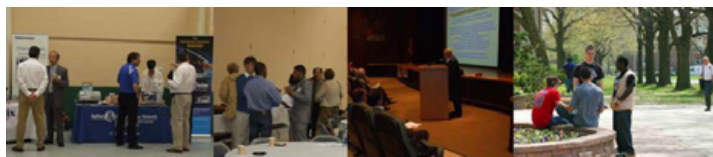
Detailed instructions on submission, manuscript and presentation templates, and information on the conference are available on the LISAT web site at WWW.IEEE.LI/LISAT. Manuscript format must agree with requirements specified in the Author's Kit which will be made available.

Each presentation will be 15 minutes long followed by 5 minutes of Q&A. One presenting author for each paper will be allowed to register at a discounted rate. At least one author must register for the conference **for each paper/presentation**. If one presenter is presenting multiple papers, then multiple registrations are required. A limited number of tutorial and application presentations which will not be published by the IEEE may also be accepted. LISAT encourages submissions from all areas of engineering, science, and technology. Past topics have including homeland defense, alternate energy sources, green building technologies, mobile communications, computer and network security, microwave technology, electromagnetic compatibility, mobile ad hoc networking, sensor fusion, antenna systems and processing, radio locating, radar systems and techniques, climate control, and biomedical engineering.

LISAT has a strict "No Podium, No Publish" policy. "Manuscripts will only be submitted for publication in IEEE Xplore if a presentation is made at the Conference."

For information on Exhibiting at LISAT, please contact: Jaime Lima at LIMA@Telephonics.com, **For all other information** contact LISAT2015 Conference Chair of the Technical Program Committee: Dr. Ronald Pirich at rpirich@gmail.com, Conference Chair: Dr. Charles Rubenstein at c.rubenstein@ieee.org or Conference Co-Chair: Dan Rogers at drogers@ieee.org.

LISAT is sponsored by the **IEEE Long Island Section** and its Technical Society Chapters and **IEEE Region 1**, in cooperation, for the last eleven years with the **Farmingdale State College of SUNY**. **Releases and Approvals:** *This conference will be unclassified and attended by both US and non-US persons. It is the author's responsibility to obtain all required company and government releases and approvals prior to making a paper submission. A statement that such releases and approvals have been obtained as well as a completed IEEE Copyright Form (signed by the submitting author) must accompany the manuscript of each accepted paper.*



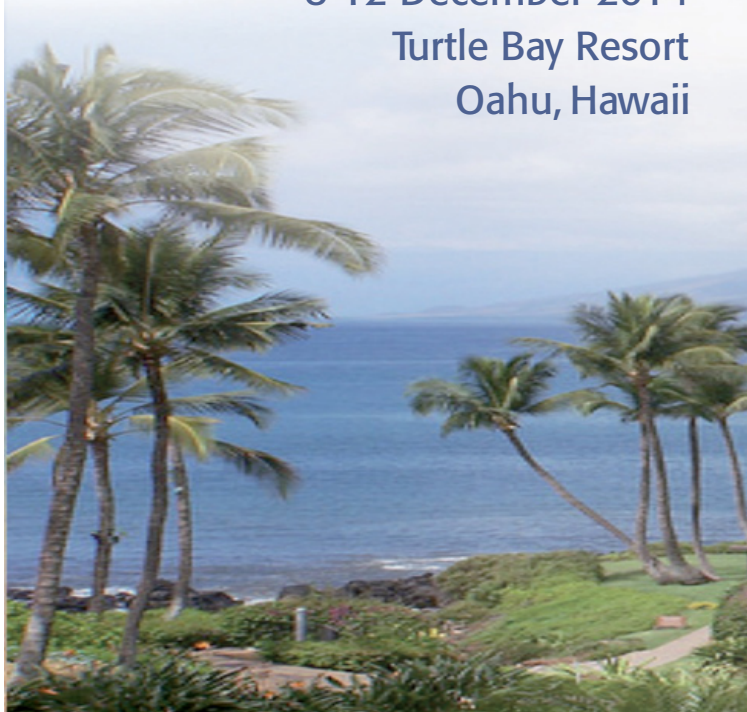
Farmingdale State College
State University of New York

EMBS MICRO & NANOTECHNOLOGY IN MEDICINE CONFERENCE

TRANSLATING TECHNOLOGY FROM THE BENCH TO THE BEDSIDE



MNMC 2014
 8-12 December 2014
 Turtle Bay Resort
 Oahu, Hawaii



Various biomedical grand challenges facing our society and the world can be addressed by interfacing biology and medicine with Micro and Nanoscale technologies. These technologies hold great potential to impact early diagnosis, therapeutics, and management of disease. IEEE EMBS is sponsoring the second biennial Conference on Micro and Nanotechnology in Medicine to foster interaction between scientists, engineers and medical researchers in the context of real-world medical needs and issues. The Conference will promote vigorous and open dialogue towards the development of cutting edge technologies for faster, more quantitative, and less expensive biomedical solutions using advances in Micro and Nanotechnology. For more details, please visit: www.mnm.embs.org/2014/

KEYNOTE SPEAKERS



Joanna Aizenberg
 Harvard University



Joseph DeSimone
 University of North Carolina



Chad Mirkin
 Northwestern University



Buddy Ratner
 University Of Washington



Sangeeta Bhatia
 Massachusetts Institute of Technology



Luke P. Lee
 University of California, Berkeley





IEEE

IEEE
Signal Processing Society



IEEE International Symposium on Biomedical Imaging

APRIL 16th - 19th, 2015, BROOKLYN, NY USA

Conference Chairs

Elsa Angelini

Telecom ParisTech, France
Columbia University, USA

Jelena Kovačević

Carnegie Mellon University, USA

Program Chairs

Sebastien Ourselin

University College London, UK

Jens Rittcher

Oxford University, UK

Organizing Committee

Stephen Aylward, Kitware
Dana Brooks, Northeastern U.
Qi Duan, NIH
Elisa Konofagou, Columbia U.
Jan Kybic, Czech Tech. University
Erik Meijering, Erasmus MC
Wiro Niessen, Erasmus MC
Ricardo Otazo, NYU
Dirk Padfield, GE Healthcare
Gustavo Rohde, Carnegie Mellon
Badri Roysam, U. of Houston
Ivan Selesnick, Polytech NYU
Dimitri Van De Ville, EPFL
Simon Warfield, Harvard
Ge Yang, Carnegie Mellon

Contact

d.bernstein@ieee.org

The IEEE International Symposium on Biomedical Imaging (ISBI) is a premier interdisciplinary conference encompassing all scales of imaging in medicine and the life sciences. The 2015 meeting will continue its tradition of fostering knowledge transfer among different imaging communities and contributing to an integrative approach to biomedical imaging across all scales of observation.

ISBI is a joint initiative from the IEEE Signal Processing Society (SPS) and the IEEE Engineering in Medicine and Biology Society (EMBS). The 2015 meeting will open with a morning of tutorials, followed by a scientific program of plenary talks, invited special sessions, challenges, as well as oral and poster presentations of peer-reviewed papers.

High-quality papers are requested containing original contributions to mathematical, algorithmic, and computational aspects of biomedical imaging, from nano- to macro-scale. Topics of interest include image formation and reconstruction, computational and statistical image processing and analysis, dynamic imaging, visualization, image quality assessment, and physical, biological, and statistical modeling. We also encourage papers that elucidate biological processes (including molecular mechanisms) or translational ramification through integration of image-based data. Accepted 4-page regular papers will be published in the symposium proceedings & included in IEEE Xplore.

To encourage attendance by a broader audience of imaging scientists (in particular from the biology, radiology, and physics community) and offer additional opportunities for cross-fertilization, ISBI will again propose a second track featuring posters selected from abstract submissions without subsequent archival publication.

IMPORTANT DATES

JUNE- SEPT. 2014: Tutorials, Special, Sessions & Challenges Proposal Submission

AUGUST 1 - NOV. 10 2014: 4-Page Paper Submission

NOV. 20 - DEC. 20 2014: 1-Page Paper Submission

Venue: ISBI 2015 will be held at the **Marriott hotel at the Brooklyn bridge**, located on Adams street, next to the historical Court House building, with premier shopping, dining, and attractions in the heart of the Dumbo district. A short walk will take you to eight subway lines, a city bike station or a yellow cab to explore Brooklyn or to reach Manhattan just 1.5 miles (2 subway stations) across the East river for memorable nights in the Big Apple.

<http://biomedicalimaging.org/2015>



IEEE

IEEE
LONG ISLAND
SECTION

8th INTERNATIONAL CONFERENCE ON ETHICS IN BIOLOGY, ENGINEERING & MEDICINE



**April
24-26
2015**

www.downstate.edu/orthopaedics/bioethicsconf2015

Call for Abstracts

The program committee is seeking abstracts submission of paper relevant to this conference, which will be evaluated for inclusion in the final agenda as Oral presentations. The Deadline for abstract submission is **November 26, 2014**. Notification of abstract acceptance December 15, 2014. Selected papers will be published in the Ethics in Biology, Engineering, and Medicine: An International Journal.

An approximately 200-300 word single spaced abstract, text only, should be typed in font size No. 12. It should be typed on 8 1/2 x 11-inch paper with one-inch margins. The preferred way is to E-mail your abstract, followed with a hard copy. In your cover letter, please identify the corresponding author with complete mailing address, telephone number and E-mail address.

SUGGESTED TOPICS FOR PRESENTATIONS

- * ETHICS IN BIOENGINEERING
- * ETHICAL ISSUES IN BIOMEDICAL RESEARCH
- * ETHICS IN NANOBIOENGINEERING
- * ETHICS IN GENETIC ENGINEERING and CLONING
- * ETHICS IN STEM CELL RESEARCH
- * RESPONSIBLE CONDUCT IN RESEARCH
- * ETHICS IN SYNTHETIC BIOLOGY
- * ETHICS IN MEDICAL RESEARCH
- * MEDICAL ETHICS & HEALTH POLICY
- * ETHICAL ISSUES IN TISSUE ENGINEERING
- * NEUROETHICS
- * PRIVACY AND BIOINFORMATICS
- * ETHICS IN BIOBANKS
- * ETHICS IN GLOBAL HEALTH
- * ETHICS IN DENTISTRY

SUNY
DOWNSTATE
Medical Center

ICEBEM' 2015

Conference Chair:

Subrata Saha, PhD
SUNY Downstate Medical Center
EBM@downstate.edu
Office- (718)-613-8652
Fax - (718)-270-3983

Keynote Speakers:

Arthur L. Caplan, PhD
New York University, New York
Mildred Z. Solomon, Ed.D
The Hastings Center, New York

Invited Speakers:

George Khushf, PhD
University of South Carolina
Kenneth R. Foster, PhD
University of Pennsylvania
Wade Robison, PhD
Rochester Institute of Technology

Registration:

(Before March 1st, 2015)
Registration Fee*: \$200
One-Day Registration
(does not include banquet): \$150
Student Registration:* \$70
Guest Banquet Ticket: \$50

(After March 1st, 2015)
Registration Fee*: \$250
One-Day Registration
(does not include banquet): \$200
Student Registration:* \$90
Guest Banquet Ticket: \$50

Conference Site

SUNY Downstate Medical Center
450 Clarkson Avenue
Brooklyn, NY 11203



IEEE

**IEEE
LONG ISLAND
SECTION**



MEMBER IEEE L.I.
CONSULTANTS NETWORK



Peter Buitenkant
— CONSULTANT —

MICROPROCESSOR HARDWARE / SOFTWARE DESIGNS
DIGITAL CIRCUIT DESIGN • TRAINING COURSES

24 Thorngrove Lane
Dix Hills, NY 11746

VOICE: (631) 491-3414
EMAIL: peterbui@optonline.net

(516) 378-0979

ambertec@ieee.org

Ambertec, P.E., P.C.

John Dunn- MSEE, PE Engineering Consultant
Member IEEE Consultants Network of Long Island

<http://www.licn.org>

181 Marion Avenue

Merrick, NY 11566

Real Time Embedded – Banking/Brokerage – QA
OO Design – Compilers – Communications
Unix/Linux – Windows – C/C++ – HP – Sun – PC



EARLY ELECTRONICS
Hardware / Software Consulting Services

Chris Early, BSEE, MSCS, PE
154 Hempstead Avenue
Rockville Centre, NY 11570

unixdev@ix.netcom.com
Voice: (516) 764-1067
Fax: (516) 764-1124

SIGNALS IN MOTION



Len Anderson
President

P: 718-279-3953
F: 509-471-6496
E: LenAnder@SignalsinMotion.com
www.SignalsinMotion.com

Innovation Design and Solutions, Inc.

Electronic design, implementation and management

Internet access for embedded systems
Portable and low-power devices
Telephony and cellular/wireless

www.4innovation.biz

New York
631.427.1112

Massachusetts
508.967.2511

ADVANCE IN TECHNOLOGY, INC.
Electronic Design – Analog, Digital, RF and Systems

JOHN LIGUORI
CEO, MSEE
631-865-2423

82 Westwood Avenue, Deer Park, NY 11729
www.advance-in-technology.com
JLiguori@advancein-technology.com



Sadinsky Consulting
Samuel Sadinsky, P.E.

Engineering Consultant:

Electromechanical and Electronic Systems
Circuit Design and Amelioration
Plasma Sputtering and Etching

Voice/Fax (631)476-5780
s.sadinsky@ieee.org

79 Miller Avenue
Port Jefferson Station
New York, 11776-3735

Fred Katz Consulting, Inc.

93 STEVEN PLACE WEST HAUPPAUGE, NY 11788

Wireless,
Motion, Occupancy Sensors & Power Circuitry
Proposals, Contracts & Specification Development
Innovative Creation, Electro-Mechanical
Analog & Digital Circuit/System Design
System Analysis/Documentation
Commercial/Military Product Design
Sonar Systems and Acoustic Signal Processing



fred@fredkatzconsulting.com www.fredkatzconsulting.com

Fred Katz (631) 724-7702 Electronics Consultant
President

Memberships: IEEE Senior Life Member, IEEE LI Consultants Network, LI Metal Workers, Mensa Society, NYS Professional Inventors, Suffolk County Inventors

EXPERT WITNESS TECHNICAL INVESTIGATOR

MARTIN KANNER AE, EE, MEE

PRODUCT LIABILITY
MACHINE INJURY

FIRE DAMAGE INJURY
LIGHTNING DAMAGE



POWER-CONTROLS
DIV.

sixxpoppy@juno.com
(516) 681-4346

42 Glenwood Road

Essex Systems

36 Flower Hill Rd
Huntington, NY 11743

www.essexsys.com

Phone: (631)271-9714
sjlbrown@essexsys.com



Engineering Consulting
Electromechanical systems
Measurement & control
Signal Processing
Web Handling
Vibrations

Jerry Brown
Consultant

Carl Meshenberg

Technology Consulting Services

Electronic Product Development
Project Management
Marketing Strategies
Contract Development

Mobile: 516-383-2595
Phone: 516-431-8306
CarlJoanm@gmail.com

PROGRAMMING PLUS®

2503 AVENUE X
BROOKLYN, N.Y. 11235

HARDWARE & SOFTWARE CONSULTING

• ADMINISTRATION • DATABASES • UNIX
• DEVELOPMENT • NETWORKS • LINUX
• ENGINEERING • INTERNET • VMS
• INTEGRATION • SECURITY • WINDOWS

For expert assistance, contact **Robert Weiner, P.E.**, at:
Tel: (718) 648-6902 Email: info@progplus.com
Fax: (718) 648-7449 Web: www.progplus.com

BODNER & O'ROURKE, LLP
PATENTS, TRADEMARKS, COPYRIGHTS & RELATED MATTERS

GERALD T. BODNER
PATENT ATTORNEY

425 BROADHOLLOW ROAD, SUITE 120
MELVILLE, NEW YORK 11747
TEL. 631-249-7500 FAX 631-249-4508
gbodner@bodnerorourke.com



IEEE

Be sure to visit our web Blog at:
http://licn.typepad.com/my_weblog/

**IEEE Consultants Network
of Long Island**

PO Box 411, Malverne, NY 11565-0411

<http://licn.org/>

(516) 379-1678

Affiliated with the Institute of Electrical
and Electronics Engineers, Inc.



IEEE

**IEEE
LONG ISLAND
SECTION**

The Pulse of Long Island is produced by the **Long Island Section** of the **Institute of Electrical & Electronic Engineers**.
It is published monthly except July and August.

Nikolaos Golas, *Editor*
pulse@IEEE.LI

Anthony Giresi, *Graphic Designer*
pulse@IEEE.LI

Pulse Advertising Rates

Full Page.....	\$850.00 per issue
Half Page.....	\$550.00 per issue
1/4 Page.....	\$380.00 per issue
Business Card.....	\$130.00 per issue

- *Ads in full color at no premium.*
- *10% discount of 10-time advertisers*
- *Advertising deadline 15th of the preceding month.*
- *Editorial deadline 1st of the month*

Let Us Hear From You

The **PULSE** encourages letters to the editor. Members of the IEEE Long Island Section are encouraged to write in about PULSE articles or about other topics of interest to Long Island Engineers. While the IEEE Long Island Section greatly appreciates feedback, we cannot guarantee that all letters will be answered or published. Please direct comments to pulse@IEEE.LI or to a Section officer.

The opinions expressed in this newsletter are those of the authors, and no endorsement by the Institute, its officials, or its members is implied. IEEE prohibits discrimination, harassment and bullying. For more information, visit: www.ieee.org/web/aboutus/whatis/policies/p9-26.html



INSTITUTE OF ELECTRICAL and ELECTRONICS ENGINEERS

445 Hoes Lane
Piscataway, NJ 08855-1331

Phone: 1-800-678-4333 (USA & Canada)

Phone: 1-732-981-0060 (Worldwide)

Website: www.ieee.org

E-mail: contactcenter@ieee.org