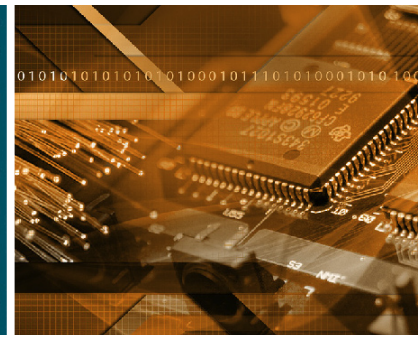


VOLUME 62, NO. 1

JANUARY 2015

THE PULSE

OF LONG ISLAND



Inside This Issue

- ❖ January 2015 / February 2015 Calendar of Events | **4**
- ❖ Long Island's Electronic History | **5**
- ❖ 2015 IEEE Long Island Section Annual Awards Banquet | **6**
- ❖ Letter To The Editor | **7**
- ❖ January 2015 / February 2015 Lectures and Seminars | **8-9**
- ❖ 2015 Conferences | **10-12**



IEEE

IEEE
LONG ISLAND
SECTION



I hope this message finds everyone in good health, and hope that you enjoyed the holidays! The election results are in, and I want to thank everyone for giving me the opportunity to serve as your 2015 IEEE Long Island Section Chairman. Please note that besides my election as section Chair, M. Nazrul Islam was elected to the position of 1st Vice Chair, Lou D'Onofrio to the position of 2nd Vice Chair, Marjaneh Issapour as Secretary and Sandy Mazzola as our new Treasurer. Please join me in welcoming all our newly elected officers!

Also, I wish to give special thanks to our outgoing 2014 Chair, John Schmidt, who gave so much of his time, creativity and tireless effort to improving IEEE both locally and at the regional level- John, thank you on behalf of the LI Section. The Section could not function without the efforts of the likes of John Schmidt, Nazrul Islam, Metodi Filipov, Lou D'Onofrio, Nikolaos Golas, Sandy Mazzola, James Colotti, Jesse Taub, Dave Mesecher, Marj Issapour, Charlie Pleckaitis, Victor Zourides, William Wilkes, Bryan Tropper and Mihaela Radu just to name a few.

As Chairman, I hope to contribute not only for the good of the IEEE LI Section but to the IEEE organization as a whole. One of my 2015 goals is to develop a better understanding on how to improve the experience of our IEEE Long Island Section members and, therefore, IEEE as a whole.

To provide some background, I have had several discussions on just this topic with 2014 Chairman John Schmidt, during which John informed me that a significant amount of new members join IEEE each year but then frequently (significantly) fail to renew their membership for a second year. If we could find the causes for this lack of renewal, and of course remedy or mediate at least one of the causes (through IEEE globally), our membership would grow.

So what do we do as the IEEE Long Island Section Executive Committee (ExCom)? Well, we work as a team. To start, let's introduce a new event in our ExCom meeting agenda, i.e., a regular 10 minute forum for "Improving Member Experience." In each forum, let's allow 3 members 60 seconds each to verbally present a "membership experience" topic, and another 2 minutes each for feedback. It makes sense that they pass out a detailed writing on same, where their 1 minute presentation advocates same detailed writing; the Secretary will take minutes. Realizing even a small suggestion for a realistic improvement to pass up to IEEE global leadership will be an achievement for the IEEE LI Section.

It might be helpful to provide a published open forum on "Improving Member Experience" in the Pulse, where any IEEE LI Section member can publish his/her suggestions for improving membership experience. I will put a few minutes to it in our first ExCom meeting in January so that we can discuss it and see if it looks like there would be participation. To this end, I felt it was prudent to research our charter in an attempt to determine if what our members receive for their dues follows what is inherently promised. Put another way, do members drop out because they fail to realize a return on their "membership dues" investment?

The objectives of IEEE are: (a) scientific and educational, directed toward the advancement of the theory and practice of electrical engineering, electronics engineering, computer engineering, computer sciences, and the allied branches of engineering and related arts and sciences and (b) professional, directed toward the advancement of the standing of the members of the profession it serves. This is a paraphrase of Article I of our IEEE Constitution http://www.ieee.org/documents/ieee_constitution_and_bylaws.pdf. But I guess it really comes down to what we get for our dues and whether this can be improved to maintain membership.

The most significant suggestion at the 2014 IEEE Sections Congress was to include, in consideration for dues, free access to IEEE Digital Library as a member benefit. Promote other IEEE services and products based on their usage and preferences (adopt Google Business Model). There are 4 recommendations at: http://www.ieee.org/societies_communities_geo_activities/sections_congress/2014/sc2014_recommendations.html.

If you are a member of the Section and not yet involved in a Society, I encourage you to become do so. Please consider attending one or several ExCom meetings, where all members are welcome to attend and participate. Just email me at chairman@IEEE.LI and I will get your name added to the list of attendees. Dinner is free (and pretty good!) and attending the meeting is probably the best way to find out what is going on in the Section. If you feel you are unable to attend, but have comments or suggestions that you might wish to share with the ExCom or the Section as a whole, just email me at chairman@IEEE.LI and I will communicate your comments. The contact information for each of the Society Chapter Chairs is posted on our webpage - <http://www.IEEE.LI> - please reach out and help!

Finally, the **2015 Awards Banquet** is scheduled for Thursday March 19th at 5:30 PM, at the Fox Hollow on Jericho Turnpike in Woodbury just east of Route 135 on the north side, where it has been held for the last two years. I hope you can come and join us to help us honor our awardees. Please see the Awards Banquet Poster announcement inside the Pulse. Thank you again for the opportunity to serve, and please reach out to me if I can help you in any way.

Thank you and Happy Holidays!

John F. Vodopia
Chairman, IEEE Long Island Section
chairman@IEEE.LI

IEEE Long Island Section Officers

*CHAIRMAN***JOHN VODOPIA**

Office: 631-673-7555

EXT. 128

chairman@IEEE.LI*FIRST VICE CHAIR***M. NAZRUL ISLAM**

Office: 631-546-2464

1vc@IEEE.LI*SECOND VICE CHAIR***LOU D'ONOFRIO**

Office: 631-928-7894

2vc@IEEE.LI*TREASURER***SANTO MAZZOLA**treasurer@IEEE.LI*SECRETARY***MARJANEH ISSAPOUR**secretary@IEEE.LI*JUNIOR PAST CHAIR***JOHN SCHMIDT***SENIOR PAST CHAIR***THOMAS LANZISERO**

Affinity Groups

*YOUNG PROFESSIONALS CHAIR***ROBERT SCHMID**gold@IEEE.LI*LIFE MEMBERS AFFINITY GROUP***VICTOR ZOURIDES**life@IEEE.LI*STUDENT DEVELOPMENT / ACTIVITIES***NEIL RAMOS**student@IEEE.LI*WOMEN IN ENGINEERING (WIE)***MIHAELA RADU**wie@IEEE.LI

The IEEE Long Island Section Website

The IEEE LI Section website is update regularly to reflect recent section activity and upcoming events. Each Society and Affinity Group has a dedicated page which describes their function and includes contact information.

Visit our site at: www.IEEE.LI

Consultant's Network of Long Island

The Consultant's Network of Long Island maintains a referral service of engineering, computer, managerial & technical professionals. For more information, please visit their website at:

www.consult-li.com

Membership Development

For more information on membership with the Long Island Section of the IEEE, e-mail M. Nazrul Islam at:

membership@IEEE.LI



JANUARY 2015

January 7, Wednesday
Long Island Consultants
Network Meeting
 Briarcliffe College
 The Great Room
 Bethpage, LI
 7:00 PM - Meeting

For more information about these meetings & lectures, please visit: www.IEEE.LI/calendar

January 8, 2015 Thursday
AIAA/IEEE (AES)
Joint Section Meeting
Critical Need for Testing
New Space Systems:
Have We Lost Our Testing Heritage?
 By Joe Neiberding
 Bethpage Public Library
 Bethpage, NY
 6:00 PM - Social Time
 6:30 PM - Pizza
 7:00 PM - Presentation

January 21, Wednesday
Joint IEEE Communications
and WIE Society Meeting
 UL, Melville, LI
 6:00 PM - Pizza
 6:30 PM - Presentation

January 26, Monday
EXCOM Meeting
 Telephonics
 Farmingdale, LI
 5:45 PM - Dinner
 6:15 PM - Meeting



FEBRUARY 2015

February 4, Wednesday
Long Island Consultants
Network Meeting
 Briarcliffe College
 The Great Room
 Bethpage, LI
 7:00 PM - Meeting

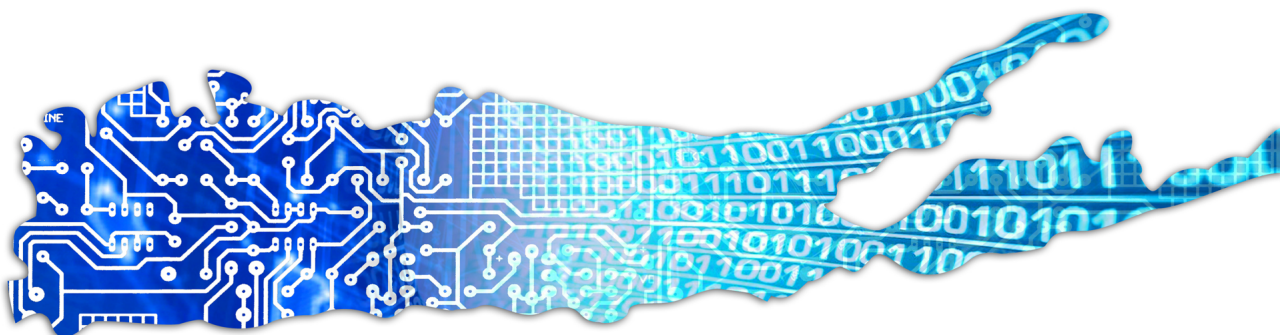
February 23, Monday
EXCOM Meeting
 Telephonics
 Farmingdale, LI
 5:45 PM - Dinner
 6:15 PM - Meeting

IEEE NEW MEMBER WELCOME

THE IEEE LONG ISLAND SECTION WOULD LIKE TO WELCOME THE FOLLOWING NEW MEMBERS FOR 2015!

Sharmin Ara	Mario Squicciarini
Jerric Clemente	Huijuan Xu
Chien-Chun Ni	Lijian Xu





Long Island's Electrical and Electronic History

By Jesse Taub, IEEE Long Island Section Historian

We continue to look at **PULSE** issues from the early 1980's. This month covers the first four months of 1982.

The January 1982 issue describes the topic for the month's Section meeting- "*Encryption and Decryption of Digital Messages*". The speaker was Mr. McNelis of Fairchild Western Systems. His main concern was to have secure communications. This area of work is of even greater importance today because of internet hackers. While this era was before the internet webcasts, IEEE members were already sharing information on the Long Island Mobile Amateur Radio Club (LIMARC). The topic for this month was spread spectrum communications.

The subject of the February Section meeting was "*The FFG-7 Class Guided Missile Frigate.*" The Speaker was Leslie Brenner of Sperry Systems Management. The attendees were given a tour of Sperry's Combat System's Test Facility in Ronkonkoma. The LIMARC technical net's topic was "*Tropospheric Scatter*". This area was still of interest but became moot with the maturation of satellite communications several years into the future.

The March **PULSE** announced the names of two new Long Island Fellows – Richard LaRosa of Hazeltine and Paul Richmond of Standard Microsystems. Richard's award was for contributions to electro-acoustic signal processing. While retired, he has continued to do work on techniques to control hurricanes and has given papers on this subject at our annual LISAT conference. Paul made pioneering contributions to the development of large scale integrated circuits.

The March Section meeting's topic was "*Direct Broadcast Satellites.*" The speaker was Wilbur Prichard, who was the president of a company with the same name. This was the very early days of the development of a system that we now take for granted as evidenced by the millions of satellite receiving dishes on homes throughout the world.

The MTT Society had a talk on Microwave Communications Technology by Ferdo Ivanek of Harris Corp. Microwave communications was a hot topic then because the ever increasing need for higher data rate communications required larger bandwidths. These bandwidths could only be achieved by going to higher carrier frequencies.

The April Section meeting's speaker was Robert Mailloux of RADC. His topic was "*Array Antennas.*" Many of the concepts that he spoke about could not be implemented then because of their high cost. The maturation of integrated circuit technology, particularly at microwave frequencies, has brought some of his concepts to fruition.

The Computer Society had a talk on "*NAVAIR Computer Aided Manufacturing and Robotics Program*" given by Richard Retta of the Naval Air Systems Command. Much of his material on robotics was novel.

Looking back at these four **PULSE** issues shows us that many of the areas such as secure communications, robotics, satellite communications and array antennas were in their early stages of development. These areas, however, still have many engineering challenges but it helps us to know how things got started.

As always, I wish to thank Rod Lowman, our former Historian, for saving all of the old **PULSE** issues and James Colotti, our Webmaster, for making many of them available.



IEEE

Is Proud to Announce the

IEEE LONG ISLAND SECTION ANNUAL AWARDS BANQUET

THURSDAY MARCH 19th, 2015 AT 5:30 PM • FOX HOLLOW, 7725 JERICHO TURNPIKE, WOODBURY, NY

Contact Lou D'Onofrio at 2vc@ieee.li for ticket information

FELLOW AWARD

Ms. Monisha Ghosh, INTERDIGITAL

For contributions to cognitive radio and signal processing for communications systems

LONG ISLAND SECTION ALEX GRUENWALD AWARD

Mr. John Schmidt, PRODUCT SUPPORT SOLUTIONS

For outstanding leadership of the IEEE LI Section

LONG ISLAND SECTION ATHANASIOS PAPOULIS OUTSTANDING EDUCATOR AWARD

Dr. Sleiman R. Ghorayeb, HOFSTRA UNIVERSITY

For innovative Contributions to Biomedical Engineering Education

LONG ISLAND SECTION CHARLES HIRSCH AWARD

Mr. Stephen Buckley, PRODUCT SUPPORT SOLUTIONS

For development and integraton of new speech recognition systems in the field of interactive voice response

FRIEND OF THE IEEE LONG ISLAND SECTION AWARD

Telephonics Corporation

For generously hosting a variety of IEEE Long Island Section meetings for many years

LONG ISLAND SECTION HAROLD WHEELER AWARD

Mr. Scott Fisher, EXELIS

For outstanding technical management in developing electronic warfare components and systems

LONG ISLAND SECTION LIFETIME ACHIEVEMENT AWARD

Mr. Alfred R. Lopez, BAE SYSTEMS (RETIRED)

For important contributions to electrically scanned antennas and many years of dedicated service to the IEEE

OUTSTANDING STUDENT BRANCH AWARD

Farmingdale State College

For continuous support of the IEEE Long Island Systems Applications and Technology (LISAT) Conference

LONG ISLAND SECTION VOLUNTEER AWARD

Dr. M. Nazrul Islam, FARMINDALE STATE COLLEGE

For revitalizing the Photonics Society chapter and leadership in many other Section activities

LONG ISLAND SECTION OUTSTANDING YOUNG ENGINEER AWARD

Dr. Aydin Farajidavar, NY INSTITUTE OF TECHNOLOGY

For pioneering contributions to the development of medical devices for treatment of chronic pain and gastric disease diagnosis

REGION 1 AWARD

Dr. Akshay Athalye, SCANDENT

For contributions to advancing RFID technology for the benefit of humanity in the medical services profession

REGION 1 AWARD

Mr. Gilbert M. Lipper, ADVANCED TECHNICAL MARKETING

For contributions to the success of the IEEE Long Island Systems, Applications and Technology Conference by encouraging and obtaining industry support.

REGION 1 AWARD

Mr. Matthew B. Nissen, CONSOLIDATED EDISON OF NY

For contributions to continuing engineering education in connection with the IEEE Long Island Systems Application and Technology Conference

REGION 1 AWARD

Mr. Anthony Olivo, STONY BROOK UNIVERSITY

For his generous and continuous efforts dedicated to the IEEE and IEEE-HKN student chapters

REGION 1 ALEX GRUENWALD PACE AWARD

Long Island Section

For outstanding PACE programs promoting professional development within the IEEE

Award descriptions & nomination information can be found at: www.IEEE.LI/awards



IEEE

IEEE LONG ISLAND SECTION

LONG ISLAND REPRESENTATION IN IEEE-USA

We are fortunate to have Peter Eckstein as our IEEE-USA President Elect, 2015. This means that Peter will be our IEEE-USA President in 2016.

Aside for all the great reasons to have Peter as the IEEE-USA President, there are also advantages to having local people serve at that level.

I would like to call to the attention of the LI Section's Members that Charles Rubenstein is seeking to become a candidate for the position of IEEE-USA President Elect- 2016. If Charles is successful in getting onto the ballot, and was then elected, that would mean we would have a continuity of local representatives.

I have known Charles for many years, have seen the fruits of his efforts especially with the LISAT Conference and as a member of the IEEE, I personally endorse Charles and recommend that other members also sign his petition at <http://www.ieee.org/petition> to enable him to be on the ballot.

John Schmidt
Senior Member, IEEE



would like to thank for it's support:



BODNER & O'ROURKE, LLP
PATENTS, TRADEMARKS, COPYRIGHTS

GERALD T. BODNER
PATENT ATTORNEY

(formerly an electrical engineer with AIL Systems, now ITT)

425 BROADHOLLOW ROAD, SUITE 120
MELVILLE, NEW YORK 11747
TEL. 631-249-7500 FAX 631-249-4508
gbodner@bodnerorourke.com





AIAA / IEEE(AES) JOINT SECTION MEETING

"CRITICAL NEED FOR TESTING NEW SPACE SYSTEMS" HAVE WE LOST OUR TESTING HERITAGE?



DATE:
Thursday, January 8, 2015

PRESENTED BY:
Joe Nieberding
President,
*Aerospace
Engineering Associates*

LOCATION:
Bethpage Public Library
47 Powell Avenue,
Bethpage, NY, 11714

TIME:
6:00 PM - Social Time
6:30 PM - Pizza
7:00 PM - Presentation



The purpose of this presentation is to renew awareness of the critical need to rigorously test new space systems before flight, and to counter the trend to reduce such testing. There is a real concern that we have lost our testing heritage, our culture of testing. Examples of comprehensive Centaur, Space Shuttle Main Engine, and Apollo testing are discussed. The role of testing "screens" in the overall design verification process is also discussed, as well as why these screens are frequently ineffective. Several factors contribute to ineffective screens. Among them are tests that were never incorporated into the test plan, tests that were improperly performed, or flawed simulation in lieu of testing. Three actual NASA historic flight failures are discussed, and why the testing was ineffective in each case. Mr. Nieberding concludes that programs that adopt a minimalist approach to testing are betting on the ability of the engineering community to foresee all aspects of system performance under all conditions. But history has shown that is a very risky bet!

After earning a B.S in physics and an M.S. in Engineering Science, Mr. Nieberding has acquired over 48 years of management and technical experience in the aerospace industry. He is a widely recognized expert in launch vehicles and advanced transportation architecture planning for space missions. He was a launch team member on over 65 NASA Atlas/Centaur and Titan/Centaur launches at Kennedy Space Center. He led and participated in many independent program review teams for NASA Headquarters. While at NASA, the Advanced Space Analysis Office under his direction led all exploration advanced concept studies for the Glenn Research Center, including transportation, propulsion, power, and communications systems for many advanced NASA mission applications. Since retirement in 2000, he has held numerous consulting positions for NASA and other government agencies. In addition, Mr. Nieberding is co-founder and President of Aerospace Engineering Associates.

RESERVATIONS REQUESTED RSVP BY

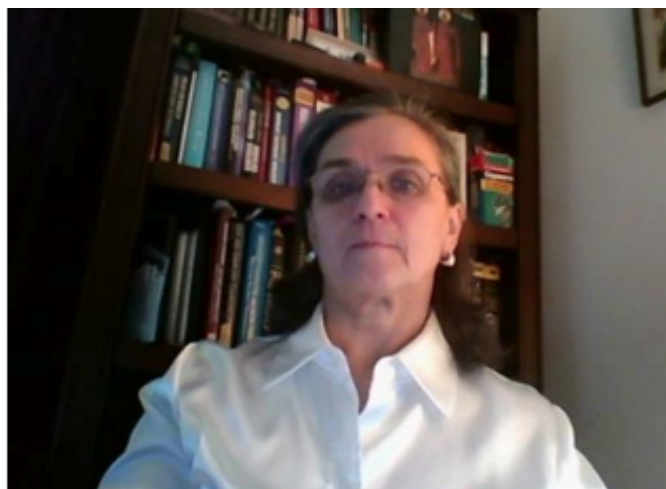
January 7, 2015 to: **David Paris** at:

davidsparis@optonline.net or (516) 458-8593

Directions: The library is west of Route 135 in Bethpage. Take Route 135 to Exit 8, then West on Powell Ave. for about 0.25 miles. The library is on the south side of the street. Park across Powell Ave., opposite the library.



THE LONG ISLAND CHAPTER OF IEEE ENGINEERING IN COMMUNICATIONS SOCIETY and THE WOMEN IN ENGINEERING SOCIETY ARE GIVING A PRESENTATION TITLED:
WIRELESS COMMUNICATIONS EVOLUTION TO 5G



DATE:

Wednesday, January 21, 2015

PRESENTED BY:

Lyubov Knyazeva-Renselaer

LOCATION:

UL LLC
 1285 Walt Whitman Road, Melville, NY 11747

TIME:

6:00 PM - Social Time
 6:30 PM - Pizza
 7:00 PM - Presentation

e-mail: lrensela@ieee.org

<http://www.linkedin.com/in/lyubovrenselaer/>

ABSTRACT:

WHAT DRIVES 5G? Bigger, faster, higher. The development of mobile cellular networks requires higher frequency band, higher quality of service, faster speed. Smart phones are undoubtedly the focus of service architectures for future mobile access. The dramatic growth of mobile data services driven by wireless Internet and Smart Devices has triggered investigation of 5G for the next generation of terrestrial mobile telecommunications.

The mobile traffic requirements have shown different futures that introduce significant impact on future mobile system architectures, technology developments and evolution. Future traffic development brings new requirements and challenges to future mobile broadband systems: (higher traffic volume, spectrum energy and cost efficiency). There are some new possible revolutionary technologies that are needed to support high performance computing for signal processing, full duplex, non-orthogonal waveforms, massive MIMO and more. New research will benefit 5G in the long run, & new revolutionary technologies might be used in some specific scenarios. The presentation is cosponsored by Engineering in Medicine & Biology Society.

SPEAKER BIO:

Lyubov holds M's EENG from NYIT, Certificate of course completion WCET, Certificate of Cisco Networking Device, also Java and C, C++ languages Certificates. Lyubov is the member of comsoc.ieee.org, computer soc.ieee.org and wie.li

Lyubov has 20 years of Telecommunications engineering experience in Digital Telecommunications Exchange, both in industry and at a Medical Hospital. space Engineering Associates.

The coordinator of this event:

Glenn M. Luchen, Staff Engineer, Life@Health

Please register at IEEE.LI calendar: www.IEEE.LI

Directions:

LIE (495), exit 49S towards 110, merge into s service rd, take the first left on Walt Witman Rd, 12 85 Walt Whitman Rd, UL is on the left side; please enter at back of building.



FRIDAY, MAY 1, 2015

LISAT 2015

Eleventh Annual IEEE Long Island Systems, Applications and Technology Conference

HELD AT THE FARMINGDALE STATE COLLEGE OF THE STATE UNIVERSITY OF NEW YORK, FARMINGDALE, NY

CALL FOR PAPERS, PRESENTATIONS, EXHIBITORS and STUDENT PAPERS

The Long Island Systems, Applications and Technology (LISAT) Conference features several parallel professional tracks including topics in systems, applications, and technology; a PDH program and an Exhibition. We are soliciting submissions for participation in both the technical program, applications program, and the exhibition, and are interested in papers, presentations, and exhibits that showcase the development and use of technology by local organizations. LISAT 2015 will also provide the opportunity for select student papers to be presented. Undergraduate and graduate students are encouraged to submit papers in an area of their interest or current work.

Authors shall be required to provide a six (6) page IEEE standard manuscript for publication in IEEE Xplore, and will be required to make a Power Point TM presentation at the conference. Manuscripts are subject to the LISAT Technical Program Committee's peer review and may require revision prior to final acceptance. Important dates for the Technical Program are:

LISAT 2015 IMPORTANT DATES	
MANUSCRIPTS FOR PUBLICATION AND COPYRIGHT RELEASES DUE	MARCH 27, 2015
NOTIFICATION OF ACCEPTANCE OF MANUSCRIPTS (SUBJECT TO FINAL EDITS)	APRIL 10, 2015
PRESENTER REGISTRATION	APRIL 17, 2015
FINAL MANUSCRIPT EDITS, BIOS, AND POWER POINT DUE	APRIL 17, 2015
LISAT2015 CONFERENCE	MAY 1, 2015

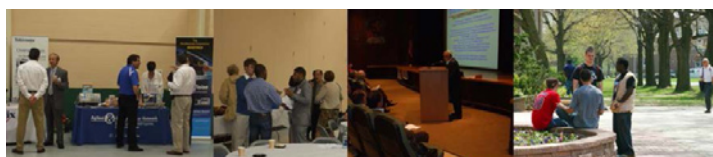
Detailed instructions on submission, manuscript and presentation templates, and information on the conference are available on the LISAT web site at WWW.IEEE.LI/LISAT. Manuscript format must agree with requirements specified in the Author's Kit which will be made available.

Each presentation will be 15 minutes long followed by 5 minutes of Q&A. One presenting author for each paper will be allowed to register at a discounted rate. At least one author must register for the conference **for each paper/presentation**. If one presenter is presenting multiple papers, then multiple registrations are required. A limited number of tutorial and application presentations which will not be published by the IEEE may also be accepted. LISAT encourages submissions from all areas of engineering, science, and technology. Past topics have including homeland defense, alternate energy sources, green building technologies, mobile communications, computer and network security, microwave technology, electromagnetic compatibility, mobile ad hoc networking, sensor fusion, antenna systems and processing, radio locating, radar systems and techniques, climate control, and biomedical engineering.

LISAT has a strict "No Podium, No Publish" policy. "Manuscripts will only be submitted for publication in IEEE Xplore if a presentation is made at the Conference."

For information on Exhibiting at LISAT, please contact: Jaime Lima at LIMA@Telephonics.com, **For all other information** contact LISAT2015 Conference Chair of the Technical Program Committee: Dr. Ronald Pirich at rpirich@gmail.com, Conference Chair: Dr. Charles Rubenstein at c.rubenstein@ieee.org or Conference Co-Chair: Dan Rogers at drogers@ieee.org.

LISAT is sponsored by the **IEEE Long Island Section** and its Technical Society Chapters and **IEEE Region 1**, in cooperation, for the last eleven years with the **Farmingdale State College of SUNY**. **Releases and Approvals:** *This conference will be unclassified and attended by both US and non-US persons. It is the author's responsibility to obtain all required company and government releases and approvals prior to making a paper submission. A statement that such releases and approvals have been obtained as well as a completed IEEE Copyright Form (signed by the submitting author) must accompany the manuscript of each accepted paper.*



Farmingdale State College
State University of New York



IEEE

IEEE
Signal Processing Society



IEEE International Symposium on Biomedical Imaging

APRIL 16th - 19th, 2015, BROOKLYN, NY USA

Conference Chairs

Elsa Angelini

Telecom ParisTech, France
Columbia University, USA

Jelena Kovačević

Carnegie Mellon University, USA

Program Chairs

Sebastien Ourselin

University College London, UK

Jens Rittcher

Oxford University, UK

Organizing Committee

Stephen Aylward, Kitware

Dana Brooks, Northeastern U.

Qi Duan, NIH

Elisa Konofagou, Columbia U.

Jan Kybic, Czech Tech. University

Erik Meijering, Erasmus MC

Wiro Niessen, Erasmus MC

Ricardo Otazo, NYU

Dirk Padfield, GE Healthcare

Gustavo Rohde, Carnegie Mellon

Badri Roysam, U. of Houston

Ivan Selesnick, Polytech NYU

Dimitri Van De Ville, EPFL

Simon Warfield, Harvard

Ge Yang, Carnegie Mellon

Contact

d.bernstein@ieee.org

The IEEE International Symposium on Biomedical Imaging (ISBI) is a premier interdisciplinary conference encompassing all scales of imaging in medicine and the life sciences. The 2015 meeting will continue its tradition of fostering knowledge transfer among different imaging communities and contributing to an integrative approach to biomedical imaging across all scales of observation.

ISBI is a joint initiative from the IEEE Signal Processing Society (SPS) and the IEEE Engineering in Medicine and Biology Society (EMBS). The 2015 meeting will open with a morning of tutorials, followed by a scientific program of plenary talks, invited special sessions, challenges, as well as oral and poster presentations of peer-reviewed papers.

High-quality papers are requested containing original contributions to mathematical, algorithmic, and computational aspects of biomedical imaging, from nano- to macro-scale. Topics of interest include image formation and reconstruction, computational and statistical image processing and analysis, dynamic imaging, visualization, image quality assessment, and physical, biological, and statistical modeling. We also encourage papers that elucidate biological processes (including molecular mechanisms) or translational ramification through integration of image-based data. Accepted 4-page regular papers will be published in the symposium proceedings & included in IEEE Xplore.

To encourage attendance by a broader audience of imaging scientists (in particular from the biology, radiology, and physics community) and offer additional opportunities for cross-fertilization, ISBI will again propose a second track featuring posters selected from abstract submissions without subsequent archival publication.

IMPORTANT DATES

JUNE - SEPT. 2014: Tutorials, Special, Sessions & Challenges Proposal Submission

AUGUST 1 - NOV. 10 2014: 4-Page Paper Submission

NOV. 20 - DEC. 20 2014: 1-Page Paper Submission

Venue: ISBI 2015 will be held at the **Marriott hotel at the Brooklyn bridge**, located on Adams street, next to the historical Court House building, with premier shopping, dining, and attractions in the heart of the Dumbo district. A short walk will take you to eight subway lines, a city bike station or a yellow cab to explore Brooklyn or to reach Manhattan just 1.5 miles (2 subway stations) across the East river for memorable nights in the Big Apple.

<http://biomedicalimaging.org/2015>



IEEE

IEEE
LONG ISLAND
SECTION

8th INTERNATIONAL CONFERENCE ON ETHICS IN BIOLOGY, ENGINEERING & MEDICINE



**April
24-26
2015**

www.downstate.edu/orthopaedics/bioethicsconf2015

Call for Abstracts

The program committee is seeking abstracts submission of paper relevant to this conference, which will be evaluated for inclusion in the final agenda as Oral presentations. The Deadline for abstract submission is **November 26, 2014**. Notification of abstract acceptance December 15, 2014. Selected papers will be published in the Ethics in Biology, Engineering, and Medicine: An International Journal.

An approximately 200-300 word single spaced abstract, text only, should be typed in font size No. 12. It should be typed on 8 1/2 x 11-inch paper with one-inch margins. The preferred way is to E-mail your abstract, followed with a hard copy. In your cover letter, please identify the corresponding author with complete mailing address, telephone number and E-mail address.

SUGGESTED TOPICS FOR PRESENTATIONS

- * ETHICS IN BIOENGINEERING
- * ETHICAL ISSUES IN BIOMEDICAL RESEARCH
- * ETHICS IN NANOBIOENGINEERING
- * ETHICS IN GENETIC ENGINEERING and CLONING
- * ETHICS IN STEM CELL RESEARCH
- * RESPONSIBLE CONDUCT IN RESEARCH
- * ETHICS IN SYNTHETIC BIOLOGY
- * ETHICS IN MEDICAL RESEARCH
- * MEDICAL ETHICS & HEALTH POLICY
- * ETHICAL ISSUES IN TISSUE ENGINEERING
- * NEUROETHICS
- * PRIVACY AND BIOINFORMATICS
- * ETHICS IN BIOBANKS
- * ETHICS IN GLOBAL HEALTH
- * ETHICS IN DENTISTRY

SUNY
DOWNSTATE
Medical Center

ICEBEM' 2015

Conference Chair:

Subrata Saha, PhD
SUNY Downstate Medical Center
EBM@downstate.edu
Office- (718)-613-8652
Fax - (718)-270-3983

Keynote Speakers:

Arthur L. Caplan, PhD
New York University, New York
Mildred Z. Solomon, Ed.D
The Hastings Center, New York

Invited Speakers:

George Khushf, PhD
University of South Carolina
Kenneth R. Foster, PhD
University of Pennsylvania
Wade Robison, PhD.
Rochester Institute of Technology

Registration:

(Before March 1st, 2015)
Registration Fee*: \$200
One-Day Registration
(does not include banquet): \$150
Student Registration:* \$70
Guest Banquet Ticket: \$50

(After March 1st, 2015)
Registration Fee*: \$250
One-Day Registration
(does not include banquet): \$200
Student Registration:* \$90
Guest Banquet Ticket: \$50

Conference Site

SUNY Downstate Medical Center
450 Clarkson Avenue
Brooklyn, NY 11203



IEEE

**IEEE
LONG ISLAND
SECTION**



MEMBER IEEE L.I.
CONSULTANTS NETWORK



Peter Buitenkant
— CONSULTANT —

MICROPROCESSOR HARDWARE / SOFTWARE DESIGNS
DIGITAL CIRCUIT DESIGN • TRAINING COURSES

24 Thorngrove Lane
Dix Hills, NY 11746

VOICE: (631) 491-3414
EMAIL: peterbui@optonline.net

(516) 378-0979

ambertec@ieee.org

Ambertec, P.E., P.C.

John Dunn- MSEE, PE Engineering Consultant
Member IEEE Consultants Network of Long Island

<http://www.licn.org>

181 Marion Avenue

Merrick, NY 11566

Real Time Embedded – Banking/Brokerage – QA
OO Design – Compilers – Communications
Unix/Linux – Windows – C/C++ – HP – Sun – PC



EARLY ELECTRONICS
Hardware / Software Consulting Services

Chris Early, BSEE, MSCS, PE
154 Hempstead Avenue
Rockville Centre, NY 11570

unixdev@ix.netcom.com
Voice: (516) 764-1067
Fax: (516) 764-1124

SIGNALS IN MOTION



Len Anderson
President

P: 718-279-3953
F: 509-471-6496
E: LenAnder@SignalsInMotion.com
www.SignalsInMotion.com

Innovation Design and Solutions, Inc.

Electronic design, implementation and management

Internet access for embedded systems
Portable and low-power devices
Telephony and cellular/wireless

www.4innovation.biz

New York
631.427.1112

Massachusetts
508.967.2511

ADVANCE IN TECHNOLOGY, INC.
Electronic Design – Analog, Digital, RF and Systems

JOHN LIGUORI
CEO, MSEE
631-865-2423

82 Westwood Avenue, Deer Park, NY 11729

www.advance-in-technology.com
JLiguori@advancein-technology.com



Sadinsky Consulting
Samuel Sadinsky, P.E.

Engineering Consultant:

Electromechanical and Electronic Systems
Circuit Design and Amelioration
Plasma Sputtering and Etching

Voice/Fax (631)476-5780
s.sadinsky@ieee.org

79 Miller Avenue
Port Jefferson Station
New York, 11776-3735

Fred Katz Consulting, Inc.

93 STEVEN PLACE WEST HAUPPAUGE, NY 11788

Wireless,
Motion, Occupancy Sensors & Power Circuitry
Proposals, Contracts & Specification Development
Innovative Creation, Electro-Mechanical
Analog & Digital Circuit/System Design
System Analysis/Documentation
Commercial/Military Product Design
Sonar Systems and Acoustic Signal Processing



fred@fredkatzconsulting.com www.fredkatzconsulting.com

Fred Katz (631) 724-7702 Electronics Consultant
President

Memberships: IEEE Senior Life Member, IEEE LI Consultants Network, LI Metal Workers, Mensa Society, NYS Professional Inventors, Suffolk County Inventors

EXPERT WITNESS

TECHNICAL INVESTIGATOR

MARTIN KANNER AE, EE, MEE

PRODUCT LIABILITY
MACHINE INJURY

FIRE DAMAGE INJURY
LIGHTNING DAMAGE



POWER-CONTROLS
DIV.

sixxpoppy@juno.com
(516) 681-4346

42 Glenwood Road

Essex Systems



36 Flower Hill Rd
Huntington, NY 11743

Engineering Consulting
Electromechanical systems
Measurement & control
Signal Processing
Web Handling
Vibrations

www.essexsys.com

Phone: (631)271-9714
sjlbrown@essexsys.com

Jerry Brown
Consultant

Carl Meshenberg

Technology Consulting Services

Electronic Product Development
Project Management
Marketing Strategies
Contract Development

Mobile: 516-383-2595
Phone: 516-431-8306
CarlJoanm@gmail.com

PROGRAMMING PLUS®

2503 AVENUE X
BROOKLYN, N.Y. 11235

HARDWARE & SOFTWARE CONSULTING

• ADMINISTRATION • DATABASES • UNIX
• DEVELOPMENT • NETWORKS • LINUX
• ENGINEERING • INTERNET • VMS
• INTEGRATION • SECURITY • WINDOWS

For expert assistance, contact **Robert Weiner, P.E.**, at:
Tel: (718) 648-6902 Email: info@progplus.com
Fax: (718) 648-7449 Web: www.progplus.com

BODNER & O'ROURKE, LLP
PATENTS, TRADEMARKS, COPYRIGHTS & RELATED MATTERS

GERALD T. BODNER
PATENT ATTORNEY

425 BROADHOLLOW ROAD, SUITE 120
MELVILLE, NEW YORK 11747
TEL. 631-249-7500 FAX 631-249-4508
gbodner@bodnerorourke.com



IEEE

Be sure to visit our web Blog at:
http://licn.typepad.com/my_weblog/

**IEEE Consultants Network
of Long Island**

PO Box 411, Malverne, NY 11565-0411

<http://licn.org/>

(516) 379-1678

Affiliated with the Institute of Electrical
and Electronics Engineers, Inc.



IEEE

**IEEE
LONG ISLAND
SECTION**

The Pulse of Long Island is produced by the **Long Island Section** of the **Institute of Electrical & Electronic Engineers**.

It is published monthly except July and August.

Nikolaos Golas, *Editor*
pulse@IEEE.LI

Anthony Giresi, *Graphic Designer*
pulse@IEEE.LI

Pulse Advertising Rates

Full Page.....	\$850.00 per issue
Half Page.....	\$550.00 per issue
1/4 Page.....	\$380.00 per issue
Business Card.....	\$130.00 per issue

- *Ads in full color at no premium.*
- *10% discount of 10-time advertisers*
- *Advertising deadline 15th of the preceding month.*
- *Editorial deadline 1st of the month*

Let Us Hear From You

The **PULSE** encourages letters to the editor. Members of the IEEE Long Island Section are encouraged to write in about PULSE articles or about other topics of interest to Long Island Engineers. While the IEEE Long Island Section greatly appreciates feedback, we cannot guarantee that all letters will be answered or published. Please direct comments to pulse@IEEE.LI or to a Section officer.

The opinions expressed in this newsletter are those of the authors, and no endorsement by the Institute, its officials, or its members is implied. IEEE prohibits discrimination, harassment and bullying. For more information, visit: www.ieee.org/web/aboutus/whatis/policies/p9-26.html



INSTITUTE OF ELECTRICAL and ELECTRONICS ENGINEERS

445 Hoes Lane
Piscataway, NJ 08855-1331

Phone: 1-800-678-4333 (USA & Canada)

Phone: 1-732-981-0060 (Worldwide)

Website: www.ieee.org

E-mail: contactcenter@ieee.org