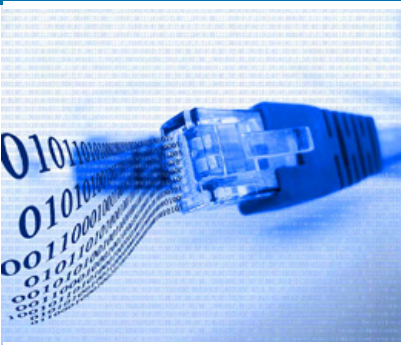




# THE PULSE

OCTOBER 2015

## OF LONG ISLAND



### INSIDE THIS ISSUE

- ❖ IEEE Long Island Section 2016 Officer Nominations | **6**
- ❖ October/November 2015 Calendar of Events | **7**
- ❖ Long Island's Electronic History | **8**
- ❖ IEEE Long Island Section Award Nominations | **11**
- ❖ October 2015 Lectures and Seminars | **12-15**
- ❖ IEEE DAY 2015 | **16**
- ❖ 2015 Conferences | **17-24**



Hello everyone. Another month has come and gone, and fall official began on September 21. Several events, planned for the near future, I wish to mention. First, **IEEE Day 2015** is coming up this Tuesday, October 6, 2015. To celebrate in this part of the world, the IEEE North New Jersey Section has organized a visit to the Intrepid Sea, Air and Space Museum in honor of same. Please register at <https://meetings.vtools.ieee.org/m/35382>.

Next, the **12th International Conference & Expo on Emerging Technologies for a Smarter World (CEWIT2015)** is to be held at the Melville Marriot Long Island, Melville, NY this coming Monday and Tuesday, October 19 and 20. The following links will bring to the registration page, a page informing you of the agendas and a page informing you of the tutorials:

### **12th International Conference and Expo on Emerging Technologies for a Smarter World (CEWIT2015)**

CONFERENCE: [www.cewit.org/conference2015](http://www.cewit.org/conference2015)

PROGRAM (*Agenda, Technical/Business Tracks & Keynotes*): [www.cewit.org/conference2015/program/Agenda.html](http://www.cewit.org/conference2015/program/Agenda.html)

TUTORIALS: [www.cewit.org/conference2015/program/Tutorials.html](http://www.cewit.org/conference2015/program/Tutorials.html)

Also, plans for the **12th Annual LISAT Program**, to be held at Farmingdale State College on April 29, 2016, are almost finalized. Changing gears, volunteers are crucial to the success of our Section. If you have the time, wish to work with us and are not already involved, please take a look at our section's website on [IEEE.LI](http://IEEE.LI) and browse to the societies' and committees' pages to see the volunteer positions available. I also encourage you to attend the monthly Executive Committee (ExCom) meetings; the next one is to be held on October 26th at Telephonics in Farmingdale.

The ExCom meetings operate as forums for you to voice your concerns about IEEE, about IEEE Long Island about the state of technology in the US and to make recommendations for action that we might take to improve any of the aforementioned. There is no better place to discover what is happening in the section and how you can get involved in one of the societies to affect change. Just send me an email before you attend so I can have your name added to the attendance list. If you wish to speak to ExCom on a particular topic, please let me know your topic in advance; I will add same to the agenda, and you will have an opportunity to present your topic to ExCom and receive the feedback from those that are present.

For that matter, the Section needs your help to support maintaining and even growing IEEE Long Island membership. Our membership numbers are somewhat down at present (around 1900, IEEE LI), much of which can be attributed to shifting engineering job availability on Long Island. In my opinion, while our LI IEEE membership is important in the short term (e.g., funding from IEEE headquarters is based on membership), membership numbers in the long term reflect, whether accurately or inaccurately, a desirability of IEEE membership and, therefore, operate as a barometer of our organization as a whole.

Finally, please take a look at John Schmidt's VTools/L31 Report in the ExCom minutes from our August 24 meeting to get a feel for how many L31's have been submitted for your society for 2015. If your society is not listed, it means that there are no L31s submitted, regardless of whether your society held a meeting or not. If there is no L31, a meeting is not counted. Please have meetings and please submit L31s.

Thank you again for the opportunity to serve, and please reach out to me if I can help you in any way.

John F. Vodopia  
Chair, IEEE Long Island Section  
[chairman@IEEE.LI](mailto:chairman@IEEE.LI)



## THE PULSE

OCTOBER 2015 OF LONG ISLAND

**The Pulse of Long Island** is produced by the **Long Island Section** of the **Institute of Electrical & Electronic Engineers**. It is published monthly except during July & August.

**Davor Dokonal, Editor**  
[pulse@IEEE.LI](mailto:pulse@IEEE.LI)

**Anthony Giresi, Graphic Designer**  
[pulse@IEEE.LI](mailto:pulse@IEEE.LI)

The opinions expressed in this newsletter are those of the authors, and no endorsement by IEEE, its officials, or its members is implied. IEEE prohibits discrimination, harassment, and bullying. For more information on IEEE policies, please visit [www.ieee.org](http://www.ieee.org).

IEEE Long Island Section reserves the right to decide whether or not to publish any content in our sole discretion. Any contributed content may be edited before publishing.



### INSTITUTE OF ELECTRICAL & ELECTRONICS ENGINEERS

445 Hoes Lane, Piscataway, NJ 08855-1331

**Phone:** 1-800-678-4333 (USA & Canada)

**Phone:** 1-732-981-0060 (Worldwide)

**Website:** [www.ieee.org](http://www.ieee.org)

**E-mail:** [contactcenter@ieee.org](mailto:contactcenter@ieee.org)

## LET YOUR VOICE HEARD

**The Pulse of Long Island** is a newsletter for the members of the Long Island IEEE Section. You can let your voice heard by writing to the Editor. How to bring more value to our members? Interesting new technology, or a project? An issue of interest to members of the IEEE Long Island, Long Island engineers and computer professionals, or Long Island technical community at large? Write to the **Pulse**. Let your letter be read, and your voice heard.



## HOW TO CONTRIBUTE:

Send your letters or articles via email to [pulse@ieee.li](mailto:pulse@ieee.li).

If selected for publication, the letter or article will be edited before being published.

## CONTRIBUTION DEADLINE:

20th of a month for the next month edition.

## CONTRIBUTIONS FROM LONG ISLAND TECHNICAL & ENGINEERING COMPANIES:

Publish your technology related **press release** (up to one page) at no cost. Please send the press release as a PDF file attached to email to [pulse@ieee.li](mailto:pulse@ieee.li), addressed to the Editor, with a Subject line "Pulse -PR" followed by your company name, and the responsible contact person's name, email and phone number in the email body.

## ADVERTISERS:

Please contact us at [pulse@ieee.li](mailto:pulse@ieee.li) for advertising rates.

## IEEE LONG ISLAND SECTION OFFICERS

### *CHAIR*

**JOHN VODOPIA**

Office: 631-673-7555

EXT. 128

**chairman@IEEE.LI**

### *FIRST VICE CHAIR*

**M. NAZRUL ISLAM**

Office: 631-546-2464

**1vc@IEEE.LI**

### *SECOND VICE CHAIR*

**LOU D'ONOFRIO**

Office: 631-928-7894

**2vc@IEEE.LI**

### *TREASURER*

**SANTO MAZZOLA**

**treasurer@IEEE.LI**

### *SECRETARY*

**MARJANEH ISSAPOUR**

**secretary@IEEE.LI**

### *JUNIOR PAST CHAIR*

**JOHN SCHMIDT**

### *SENIOR PAST CHAIR*

**THOMAS LANZISERO**

## AFFINITY GROUPS

### *YOUNG PROFESSIONALS CHAIR*

**ROBERT SCHMID**

**gold@IEEE.LI**

### *LIFE MEMBERS AFFINITY GROUP*

**VICTOR ZOURIDES**

**life@IEEE.LI**

### *STUDENT DEVELOPMENT / ACTIVITIES*

**NEIL RAMOS**

**student@IEEE.LI**

### *WOMEN IN ENGINEERING (WIE)*

**MIHAELA RADU**

**wie@IEEE.LI**

### **The IEEE Long Island Section Website**

The IEEE LI Section website is regularly updated to reflect recent section activity and upcoming events. Each Society and Affinity Group has a dedicated page that describes their function and includes contact information. Visit our site at [IEEE.LI](http://IEEE.LI)

### **Consultant's Network of Long Island**

















The Consultant's Network of Long Island maintains a referral service of engineering, computer, managerial & technical professionals. For more information, please visit their website at: [www.consult-li.com](http://www.consult-li.com)

### **Membership Development**

For more information on membership with the Long Island Section of the IEEE, e-mail M. Nazrul Islam at: [membership@IEEE.LI](mailto:membership@IEEE.LI)



# 2015 IEEE LI SECTION SOCIETIES/CHAPTER OFFICERS

 <p><b>AEROSPACE &amp; ELECTRONIC SYSTEMS SOCIETY (AES)</b>  Chair: <b>Dave Mesecher</b>  Email: <a href="mailto:aes@ieee.li">aes@ieee.li</a></p>	 <p><b>ANTENNAS AND PROPAGATION SOCIETY (APS)</b>  Chair: <b>Bryan Tropper</b>  Email: <a href="mailto:ap@ieee.li">ap@ieee.li</a></p>	 <p><b>CIRCUITS AND SYSTEMS SOCIETY (CAS)</b>  Chair: <b>James Colotti</b>  Vice Chair: <b>Alex Doboli</b>  Email: <a href="mailto:cas@ieee.li">cas@ieee.li</a></p>	 <p><b>COMMUNICATIONS SOCIETY (COMSOC)</b>  Chair: <b>Lawrence Hausman</b>  Vice Chair: <b>Arnold Stillman</b>  Email: <a href="mailto:communications@ieee.li">communications@ieee.li</a></p>
 <p><b>COMPUTER SOCIETY (CS)</b>  Chair: <b>Davor Dokonal</b>  Vice Chair: <b>Metodi Filipov</b>  Email: <a href="mailto:computer@ieee.li">computer@ieee.li</a></p>	 <p><b>ELECTROMAGNETIC COMPATIBILITY SOCIETY (EMCS)</b>  Chair: <b>Santo Mazzola</b>  Vice Chair: <b>Bob DeLisi</b>  Email: <a href="mailto:emc@ieee.li">emc@ieee.li</a></p>	 <p><b>ENGINEERING IN MEDICINE &amp; BIOLOGY SOCIETY (EMBS)</b>  Chair: <b>Glenn Luchen</b>  Vice Chair: <b>John Vodopia</b>  Email: <a href="mailto:emb@ieee.li">emb@ieee.li</a></p>	 <p><b>INSTRUMENTATION AND MEASUREMENT SOCIETY (IMS)</b>  Chair: <b>Terry Stratoudakis</b>  Vice Chair: <b>Ephraim Adeola</b>  Email: <a href="mailto:im@ieee.li">im@ieee.li</a></p>
 <p><b>MICROWAVE THEORY AND TECHNIQUES SOCIETY (MTT)</b>  Chair: <b>Saikumar Padmanabhah</b>  Vice Chair: <b>Eric Darvin</b>  Email: <a href="mailto:mtt@ieee.li">mtt@ieee.li</a></p>	 <p><b>NUCLEAR AND PLASMA SCIENCES SOCIETY (NPS)</b>  Chair: <b>Shaorui Li</b>  Vice Chair: <b>Graham Smith</b>  Email: <a href="mailto:nps@ieee.li">nps@ieee.li</a></p>	 <p><b>PHOTONICS SOCIETY (IPS)</b>  Chair: <b>M. Narzul Islam</b>  Vice Chair: <b>Adam A. Filos</b>  Email: <a href="mailto:photonics@ieee.li">photonics@ieee.li</a></p>	 <p><b>POWER &amp; ENERGY/INDUSTRY APPLICATIONS SOCIETY (PES &amp; IAS)</b>  Chair: <b>Rob Schmid</b>  Vice Chair: <b>Greg Sachs</b>  Email: <a href="mailto:power@ieee.li">power@ieee.li</a></p>
 <p><b>PRODUCT SAFETY ENGINEERING SOCIETY (PSES)</b>  Chair: <b>James Colotti</b>  Vice Chair: <b>Glenn Luchen</b>  Email: <a href="mailto:safety@ieee.li">safety@ieee.li</a></p>	 <p><b>POWER ELECTRONICS SOCIETY (PELS)</b>  Chair: <b>Alberto De Leon</b>  Vice Chair: <b>Ronald DeLuca</b>  Email: <a href="mailto:pels@ieee.li">pels@ieee.li</a></p>	 <p><b>SIGNAL PROCESSING SOCIETY (SPS)</b>  Chair: <b>Jessica Donaldson</b>  Vice Chair: <b>Dr. Lijian Xu</b>  Email: <a href="mailto:signal@ieee.li">signal@ieee.li</a></p>	 <p><b>SOCIAL IMPLICATIONS OF TECHNOLOGY SOCIETY (SSIT)</b>  Chair: <b>Howard Edelman</b>  Vice Chair: <b>John Schmidt</b>  Email: <a href="mailto:social@ieee.li">social@ieee.li</a></p>
<p><b>The Long Island Section of IEEE has 17 Chapters. Each Chapter is a technical subunit of the Long Island Section, associated with an IEEE Society. The Chapters, as well as the Section, are always welcoming volunteers. If you would like to help with any of the Long Island Chapter's steering groups, please do contact the relevant Chapter Chair, Vice Chair, or one of the Section officers.</b></p>			 <p><b>TECHNOLOGY AND ENGINEERING MANAGEMENT SOCIETY (TEMS)</b>  Chair: <b>Brian Quinn</b>  Email: <a href="mailto:tmc@ieee.li">tmc@ieee.li</a></p>

## IEEE LONG ISLAND SECTION 2016 OFFICER NOMINATIONS

John Schmidt  
Chair, 2016  
Nominations Committee

**THE IEEE LONG ISLAND SECTION'S 2016 NOMINATIONS COMMITTEE  
RETURNED THE FOLLOWING SLATE FOR THE 2016 SECTION OFFICERS:**



**CHAIR:**  
*M. Nazrul Islam*



**1st VICE CHAIR:**  
*Marjaneh Issapour*



**2nd VICE CHAIR:**  
*Lou D'Onofrio*



**SECRETARY:**  
*Davor Dokonal*



**TREASURER:**  
*Sandy Mazzola*

Nominations may be made by petition.

Petition nominations must be in writing and bear the signature of at least ten (10) voting members of the IEEE Long Island Section; they are to be delivered to the Chair of the Long Island Section or to the Chair of the Section's Nominations Committee no later than **October 15th**.

*The Election shall be held November 1st through the 14th.* If no petition-nominated candidates are received, the election will be electronic only.

## IEEE NEW MEMBER WELCOME

**THE LONG ISLAND SECTION WOULD LIKE TO WELCOME  
THE FOLLOWING NEW MEMBERS FOR 2015!**

Reginald Beliard  
Anshul Gandhi  
Brandon Neil Cressi  
Alexander Gitlitz

Ryan Topps  
Bridget Hartill  
June Chang  
Arjun Rao

Michael Vetri  
Brian Bylicki  
Ashok Somasundaram  
Li Zhang  
ThomasPatrick Kennedy  
Li Shi  
Nicholas Novello  
Carmelo Antonino Zizza  
Daniel Pesce  
Ryan Mortimer  
Brandon Wagner  
Zeyang Ye

Michael Desiderio  
Adrienne Williams Birthwright  
Betsy Kingsbury Dowd  
Peter Baier  
Vivienne De Guzman  
Steven O'Meara  
Zachary F Neal  
Christopher Siena  
Sean Michael Breuer  
Jasmin Singh  
Lori Mae Jockers  
Brandon Lam



## OCTOBER 2015

**October 7**, Wednesday  
*Long Island Consultants  
Network Meeting*  
**Circuit Studies,  
Living Analog, Part 3**  
By John Dunn, MSEE, PE  
Briarcliffe College  
The Great Room  
Bethpage, LI  
7:00 PM - 9:30 PM

**October 8**, Thursday  
*Pace Meeting*  
**Saving Hubble**  
*A Lecture and Film*  
by David Gaynes  
Cradle of Aviation Museum  
Garden City, NY  
7:00 PM

**October 23**, Friday  
*Pace Meeting*  
**Welcome To Mars**  
*A Conversation and  
Book Signing with*  
**BUZZ ALDRIN**  
Cradle of Aviation  
Museum  
Garden City, NY  
7:00 PM

**October 26**, Monday  
**EXCOM Meeting**  
Telephonics  
Farmingdale, LI  
5:45 PM - Dinner  
6:15 PM - Meeting

**October 29**, Thursday  
*CAS Meeting*  
**System Level  
Signal Integrity**  
By Graham Smith  
Telephonics  
Farmingdale, LI  
6:00 PM - Refreshments  
6:30 PM - Meeting

### ROBERT BRUCE: IN MEMORIAM

A long-time member of the  
IEEE Long Island Section.

**ROBERT BRUCE**  
1927 – September 24, 2015

## NOVEMBER 2015

**November 4**, Wednesday  
*Long Island Consultants  
Network Meeting*  
Briarcliffe College  
The Great Room  
Bethpage, LI  
7:00 PM - 9:30 PM

**November 4**, Wednesday  
*EMC Society Meeting*  
**Not All Capacitors  
Are Created Equal**  
by Jon A. Rhan  
BAE Systems  
Greenlawn, LI  
6:00 PM - Refreshments  
6:30 PM - Meeting

**November 13**, Friday  
**International Energy  
and Sustainability  
Conference 2015**  
SUNY Farmingdale  
2350 Broad Hollow Rd,  
Farmingdale, NY 11735

**November 30**, Monday  
**EXCOM Meeting**  
Telephonics  
Farmingdale, LI  
5:45 PM - Dinner  
6:15 PM - Meeting



# IEEE

IEEE  
LONG ISLAND  
SECTION

would like to thank for its support:



EXCLUSIVE BENEFIT FOR IEEE MEMBERS  
Take the next step to finding your dream job!



IEEE  
**JobSite**  
The Right Candidate - Right Now!

Post your job  
profile free  
today at  
[www.ieee.org/jobs](http://www.ieee.org/jobs)



# IEEE





## Long Island's Electrical and Electronic History

By Jesse Taub, IEEE Long Island Section Historian

Last month's article featured the great inventor, Nikola Tesla, and his connection to Long Island and attempted to draw some insights relating to his inventive process. While preparing the article, I read his original paper from the 1880's on the AC (alternate current) induction motor. I found it in the February 1984 issue of the Proceedings of the IEEE. One of the ways that the IEEE celebrated its 100 years of existence was to reprint classic papers written by some of the giants of our profession. The Proceedings became the vehicle for doing this.

When I perused the February 1884 issue, I was surprised also to see papers by Steinmetz on hysteresis loss and Sprague on the first electric railway system. I found these late 19th century papers fascinating to read and I could not help trying to compare engineering today to that practiced in the earliest days of the electrical engineering profession.

Tesla's paper *"A New System of Alternate Current Motors and Transformers"* was originally presented at an AIEE meeting in May of 1888. It described his invention of the AC induction motor. It quickly caught on and was extensively used in industry & home electrical appliances. What struck me the most was that he described his brilliant invention in great detail and used almost no mathematics. It is an excellent example of how an inventive mind could visualize things working without the need for design formulas. While engineers today rely on computer simulation of their design, he was able, with a strong intuitive gift, to overcome the lack of design tools. The lesson that I took away from this is that, as good as our CAD is today, we still need to cultivate the ability to picture in one's mind a working concept before going through a computer simulation process.

Thanks to the work of Tesla and others, AC power generation and distribution was shown to be superior to Edison's earlier DC system. It became important to have efficient generators, motors, and transformers. It was soon recognized that hysteresis loss in iron and steel electromagnet cores needed to be better understood to maximize efficiency. Charles Steinmetz of General Electric did some research and came up with a formula stating that the loss is proportional to the flux density, in an iron or steel core, raised to the 1.6th power. His classic paper was originally published in the 1892 AIEE Proceedings. He made his case by doing many experiments with the different magnetic core material and found that his 1.6 law was very accurate. Here again, mathematics played a secondary role.

The paper by Frank Sprague, *"The Solution of Municipal Rapid Transit"*, was published in the 1888 AIEE Transactions. It described the first city transit system where each car was powered by electricity. This paper is a must-read for modern system engineers. While Frank Sprague was dealing with 19th-century technology, the way he went about designing the whole system would work in our 21st century. For example, the ability to have an electric motor driven rail car was not the main issue. He needed to show that his system was not only functionally superior to steam or horse-driven vehicles, but it also had to be cost-effective. Sprague delves into the costs of steam and horse power and shows that they are higher cost than electric. He does concede that an electric system has greater initial cost because the need to build a power plant. He does show that over the life of the system, electric is cheaper. The paper ends with Sprague making the case that electric power is cleaner than the alternatives. I couldn't help thinking that it sounded like a paper comparing solar to fossil fuel energy choices.

You can access the February 1984 IEEE Proceedings issue on IEEE Explore. Reading papers by our profession's pioneers can broaden the way we approach modern engineering problems. I strongly recommend it.



# IEEE computer society

## Share Your Experience PRESENTERS AND SPEAKERS NEEDED

**Working on an interesting project? Or have an interesting topic to talk about?  
A startup ready to spread a word, or in need of beta testers with computer knowledge?**

**Computer Society Chapter** invites you to present your project or your experience. For one of the upcoming meetings we'd like to mash technical and social, and have several presenters presenting interesting computer-related topics in a shorter timeframe, fostering conversation. This is an opportunity to meet each other, learn about our work and possibly identify opportunities for collaboration.

Contact IEEE Computer Society Chapter at [computer@ieee.li](mailto:computer@ieee.li) with your suggested topic.

## RICHARD E. MERWIN STUDENT SCHOLARSHIP

IEEE Computer Society is offering \$40,000 in student scholarships from \$1,000 and up to recognize and reward active student volunteer leaders in student branches or chapters who show promise in their academic and professional efforts. This scholarship was created in honor of the late Richard E. Merwin, past president of the IEEE Computer Society, to recognize and reward student leadership.

The selected winners of this award will have the opportunity to serve as IEEE Computer Society Student Ambassadors for the particular IEEE region to which they belong. Duties as Student Ambassadors will include collecting and disseminating information to student branches or chapters in their region and serving as a liaison between the IEEE Computer Society Member and Geographic Activities Board (MGAB) and student members in their region. Over a dozen scholarships of \$1,000 and up are available, for one academic year (approximately 9 months).

**THE MERWIN SCHOLARSHIP NOW HAS 2 APPLICATION DEADLINES:**  
30 April and 30 September of each year (*you may apply only once per year*).

### CRITERIA?

Evaluation criteria include participation in student IEEE branch/chapter activities (30%), academic achievement (30%), extracurricular activities (10%), letter of recommendation from student branch/chapter advisor (20%), and quality of Student Ambassador vision statement (10%).

### DEADLINE FOR APPLICATION SUBMISSIONS:

The current deadline for application submissions: 30 September 2015

### WHO IS ELIGIBLE?

Graduate students, and those in the final two years of an undergraduate program in electrical or computer engineering, computer science, or a well-defined computer related field of engineering who are active members of a student branch or chapter are eligible.

IEEE Computer Society membership is required. (Note: Students applying for the award should have a minimum one year in which to complete their degree, or be considering or enrolled to immediately start further study upon completion.) Applicants are required to have a minimum grade point average of 2.5 / 4.0 (or exam marks of at least 60%), and be a full-time student as defined by his or her academic institution during the course of the award. Student winners of the Computer Society's Richard Merwin or UPE/CS award for the previous year (13 months) are not eligible.

### TRANSCRIPTS

For your transcripts, your minimum GPA requirement is 2.5 / 4.0. If your GPA is based on percentages and NOT a 4.0 grading scale, you must include mark sheets to notate how your GPA is calculated.

### APPLICATION

Click the link below to download the application. Complete and email the final copy as a PDF or WORD file (Typo on application do NOT send ZIP file) to Eric Berkowitz: [e.berkowitz@computer.org](mailto:e.berkowitz@computer.org)

IEEE  
 computer  
society





## 2015 Volunteer Leadership Training Program (VOLT)

[ieee-elearning.org/CLE/](http://ieee-elearning.org/CLE/)

The purpose of this communication is to announce the structure of the 2015 Volunteer Leadership Training Program (VOLT).

Last year, the Volunteer Leadership Training Program (VOLT) was successfully implemented with the participation of 32 volunteers from all the regions of the IEEE. The 6-month long program launched in April 2014 and targeted volunteers with a true desire to learn about the broader IEEE, who want to participate in IEEE committees, and consider taking leadership positions within their units.

During the first 3 months of the 2014 program, participants were exposed to an in-depth learning of the IEEE structure and organizational units outside of MGA. The last 3 months focused on acquiring practical leadership knowledge that participants can apply in their professional and personal environments.

The success and popularity of the VOLT program is evident by the continuous positive feedback received from its graduates, mentors, and many volunteers across the regions. In response to this positive feedback, the VOLT Ad Hoc Committee has decided to make the IEEE foundational content available to a larger audience.

### FOR 2015 THE PROGRAM WILL CONSIST OF TWO TRACKS:

**TRACK 1** will cover key organizational units of the IEEE and focus on the foundational knowledge of the organization. These pre-requisite courses will be available to all IEEE volunteers through the Center for Leadership Excellence (CLE) website starting July 10th 2015.

**TRACK 2** will start on September 2015 and last three months. It will focus mainly on leadership related topics.

To access the **TRACK 1** courses go to <https://ieee-elearning.org/CLE/> using the IEEE Account. Choose the category "Volunteer Leadership Training Pre-Requisite" to begin. Volunteers who complete the foundational Track 1 in the CLE by Aug 24th can apply for consideration for the VOLT Program starting in September 2015. Enrollment in the 2015 class will be determined by the VOLT Ad Hoc Committee based on predefined criteria. Details will be communicated shortly.

The success of the VOLT program in 2013 and 2014 was unprecedented. We want to ensure that a larger number of IEEE volunteers take advantage of this important training and learn more about the great organization they are part of. Section Chairs are encouraged to reach out to their volunteers as applicants to the September class will need your endorsement as part of the criteria.



## CO-OP PROGRAM: Hofstra University School of Engineering and Applied Science (SEAS)

Beginning with the 2014-15 academic year, SEAS is proud to offer a co-operative educational experience, which offers qualified students the opportunity to work in companies utilizing the skills of engineers and computer scientists. The SEAS model envisions students being hired by a company after the Fall semester of their junior year and then working for an six to eight month period with suitable salary paid, and then returning to Hofstra SEAS to complete their degree requirements.

The co-op experience is a very attractive option for students and has the added benefit of cementing ties between SEAS and technology companies. For more information contact **Philip Coniglio**, Founding Director of the SEAS Co-Op Program, at **516-463-5548** or [philip.m.coniglio@Hofstra.edu](mailto:philip.m.coniglio@Hofstra.edu).

 **HOFSTRA UNIVERSITY**

# IEEE Long Island Section Award Nominations

By Jesse Taub

**Acknowledging the accomplishments of our peers is important to our profession. Each year, our Section gives several awards in various categories. You are encouraged to submit nominations for worthy candidates. You can find nomination forms on the [IEEE.LI website](#). Click on **Awards** and then click on **Nomination forms**. Section Award nominations must be sent to me no later than December 1, 2015. Received nominations will be reviewed by the Section's Awards Committee. The names of the Section Awards and their criteria are listed below:**

## ALEX GRUENWALD AWARD

This Award honors an IEEE member who has made significant contributions to our profession on Long Island, and to the IEEE at large. Alex Gruenwald was an IEEE pioneer in the area of professional activities. He was a very active member of the Long Island Section and went on to be a Region 1 Director.

## ATHANASIOS PAPOULIS AWARD

This award is presented to educators in engineering, science, or mathematics, either living or teaching within the boundaries of the Long Island Section of the IEEE, who has demonstrated innovative teaching techniques. Athanasios Papoulis was a distinguished professor at Polytechnic University who was committed to promoting quality technical education on Long Island.

## HAROLD WHEELER AWARD

This Award recognizes an IEEE member who has demonstrated outstanding technical and management abilities. Harold Wheeler was a world-famous engineer, who throughout his career at Hazeltine and Wheeler Labs, made many significant technical contributions. He was a founding member of the IEEE Long Island Section.

## FRIEND OF THE IEEE LONG ISLAND SECTION AWARD

This award is given to a company or organization in recognition and appreciation of prominent and continued support of the IEEE Long Island Section and its members, in support of the Section's goals, activities and the Engineering Profession.

## CHARLES HIRSCH AWARD

This Award recognizes an IEEE member who has made an outstanding technical contribution that has benefited Long Island. Charles Hirsch was a creative engineer at Hazeltine.

## LIFETIME ACHIEVEMENT AWARD

This Award is given to a member who has demonstrated continual and distinguished leadership, outstanding career-long contributions and service benefiting the Engineering community and the IEEE LI Section. This award is the highest honor the IEEE Long Island Section bestows on an individual.

## OUTSTANDING STUDENT CHAPTER AWARD

This award is given to an IEEE student chapter that is from one of the Long Island engineering schools. The award recognizes outstanding activities that encourage student interest in the IEEE.

## OUTSTANDING VOLUNTEER AWARD

This award honors a Long Island Section member for substantial contributions to IEEE volunteer activities at the International, National, Region, Section, Chapter, or Society level.

## OUTSTANDING YOUNG ENGINEER AWARD

This Award honors a Long Island IEEE member who has made significant technical contributions prior to his or her 35th birthday.

## AWARD NOMINATIONS

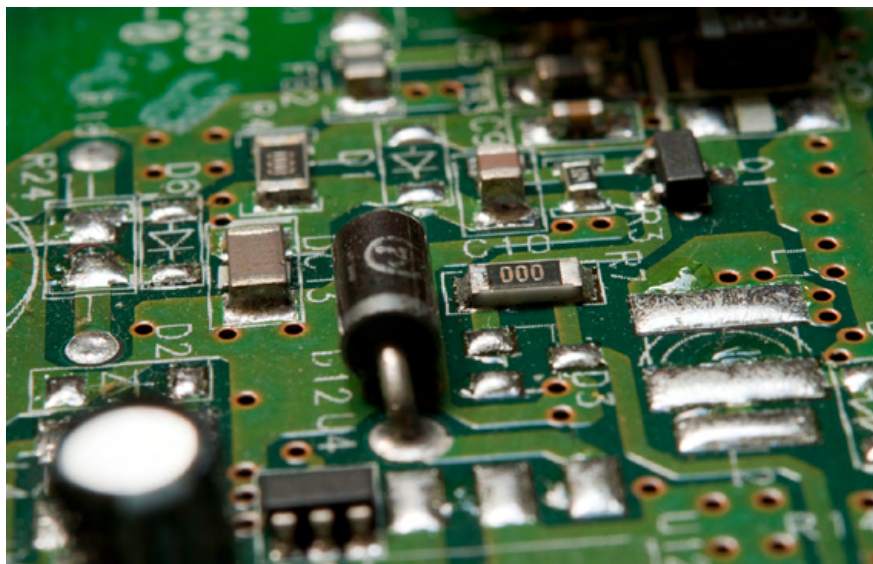
Each nomination must be received by December 1, 2015, and will be reviewed by our Section's Awards Committee. Each nomination should describe the nominee's accomplishments that relate to the Award criterion and should suggest a suitable citation. Those selected will be honored at our annual Awards Ceremony in the Spring of 2016. Nomination information for Region 1 and Fellow Awards will be given in future issues of *The Pulse*.

**PLEASE SEND ALL NOMINATIONS TO:** Jesse Taub at [jjtaub@aol.com](mailto:jjtaub@aol.com). Call at **631-320-1564** if you have any questions.



The IEEE Consultants Network of Long Island (LICN) is presenting a lecture titled:

## ***CIRCUIT STUDIES, LIVING ANALOG, PART 3***



### **DATE:**

Wednesday, October 7, 2015

### **PRESENTED BY:**

**John Dunn, MSEE, PE**

### **LOCATION:**

**Briarcliffe College,**  
The Great Room,  
1055 Stewart Ave. Bethpage, NY

### **TIME:**

6:30 PM - Refreshments  
7:00 PM - Presentation

### **COST**

This seminar is free, and all are invited.

### **CEU Credits**

0.2 CEU Credits. See Registration on-line.

### **WHO SHOULD ATTEND?**

Engineers who are interested in analog circuit design considerations.

### **ABSTRACT:**

This lecture presents A Pole, A Zero and a Transformer (feedback loop stabilization), Thixotropy (the physics of an electrically conductive gel), Measurement Errors, LED Tail Lights (an electro-optics issue), Too Little of A Bad Thing (a power MOSFET  $R_{ds(on)}$  issue), Load Switches (power supply test accessories), CFL Dissection, Skin Effect, Class B Power, Workhorses (a look at trusted semiconductors), A Microwave Oven Fire, Gapping (an induction heating issue), The Core Issue (a transformer construction consideration), Acoustic Standing Waves (an environmental issue), The R175A (a novel RF choke design), Ground Fault Protection, Two-Point-Two Tau (the mathematics behind a well known rule-of-thumb), Ground Holes (an RF board layout issue), Noise Blanking, Filter Pins, Part 2 (a usage caution) and Speaker Wires.

### **REGISTRATION:**

The presentation is open to the general public. Pre-registration is not required, there is no admission fee and there is no fee for CEU credit.

**FOR FURTHER INFORMATION CONTACT:**

**John Dunn at 516-378-0979**

### **SPEAKER BIO:**

More than forty-five years of design experience in multiple electronic disciplines including analog (low noise audio, power audio, temperature measurement, electrocardiogram recordings, etc.), power supplies (low voltage to 100 amperes and high voltage to 100,000 volts), HF/ VHF/ UHF equipment, uP development and debugging, test instrument design and test program development. Founder of LinkedIn group Analog Developments. Senior member of IEEE. Ham radio licensee since 1959. More than four-hundred-seventy published items.

### **LOCATION:**

This lecture will be held at Briarcliffe College, The Great Room, 1055 Stewart Avenue, Bethpage, New York. See [www.licn.org/info/Directions2Briarcliffe.htm](http://www.licn.org/info/Directions2Briarcliffe.htm) for a map and directions.

IEEE Continuing Education Programs are peer-reviewed by content experts. This peer review guarantees both quality of the technical content of learning materials, as well as adherence to IEEE's strict criteria for educational excellence. All programs that pass this strict process are entitled to award IEEE Continuing Education Units (CEUs), recognized as the standard of excellence for continuing education programs in IEEE's fields of interest.



THE CRADLE OF AVIATION MUSEUM & THE IEEE LONG ISLAND SECTION'S PROFESSIONAL ACTIVITIES COMMITTEE FOR ENGINEERS (PACE) ARE HAVING A JOINT LECTURE ON:

## SAVING HUBBLE

*A Lecture and Film by David Gaynes*

**DATE:**

Thursday, October 8, 2015

**PRESENTED BY:**

David Gaynes

**LOCATION:**

Cradle of Aviation Museum  
Charles Lindbergh Blvd.  
Garden City, NY

**TIME:**

7:00 PM - Presentation

**COST:**

Lecture/film is FREE but  
reservations are required.

**ABSTRACT:**

On Thursday, Oct. 8th, the Cradle & PACE are pleased to present a special evening with film maker David Gaynes. *Saving Hubble* was released in celebration of the Hubble Space Telescope's 25th Anniversary in orbit. The film explores the scientific cultural, political and spiritual significance of Hubble to astronomers, engineers, astronauts, politicians, program managers and the general public.

The Space Shuttle Discovery lifted off on April 24, 1990 with the Hubble Space Telescope on board and Hubble was released into space the following day. Hubble has reshaped our perception of the cosmos and revealed properties of space and time that for most of human history were only probed in the imaginations of scientists and philosophers alike. There have been five Hubble servicing missions, the last being in May 2009. Today Hubble continues to provide views of cosmic wonders never before seen and is at the forefront of many new discoveries.

**REGISTRATION/COST:**

Lecture/film is FREE but reservations are required. To reserve your seat for this event call 516-572-4066 (M-F from 10AM-4PM). More info online at: **SAVING HUBBLE - A Lecture and Film by David Gaynes**

**ABOUT THE PRODUCER/DIRECTOR:**

David Gaynes is an independent filmmaker whose work has been presented theatrically around the world. *Saving Hubble* is his second feature length documentary. This 70-minute film documents the fight to save the beloved Hubble Telescope from becoming space junk and poignantly captures the cultural significance of Hubble during a challenging moment in human history. David has many interesting and humorous stories to share about his experience with producing this film.

**LOCATION:**

This event will be held at the Cradle of Aviation Museum, Charles Lindbergh Blvd in Garden City. Their website can be found at: **[www.CradleOfAviation.org](http://www.CradleOfAviation.org)**

**DIRECTIONS:**

Meadowbrook Parkway to exit M4, follow signs to Museum Row/Coliseum which will put you on Charles Lindbergh Blvd, stay on Charles Lindbergh Blvd. to the second traffic light and turn right into the parking lot. For additional directions and map check:

**[www.cradleofaviation.org/plan\\_your\\_visit/directions.html](http://www.cradleofaviation.org/plan_your_visit/directions.html)**

**IEEE SEMINAR COORDINATOR:**

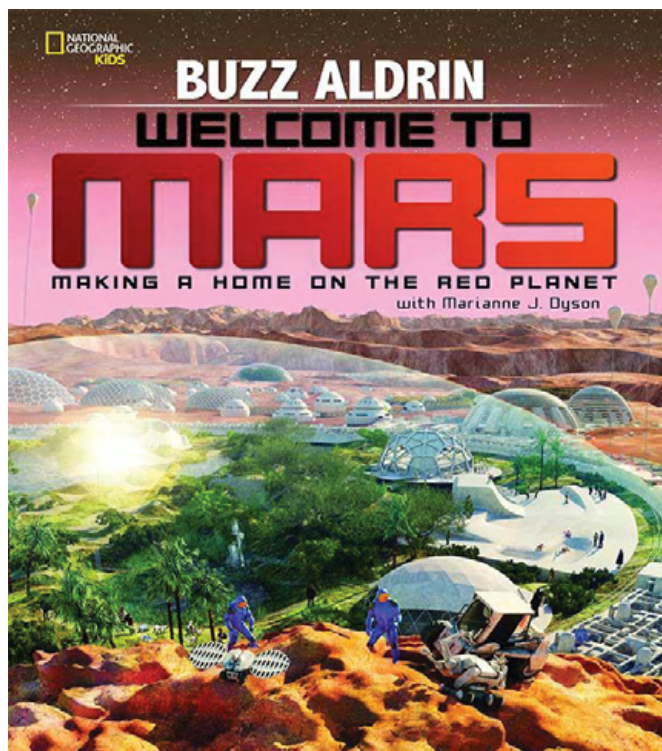
Mr. Nikolaos Golas, Chair PACE (Professional Activities Committee for Engineers), IEEE LI Section



THE CRADLE OF AVIATION MUSEUM & THE IEEE LONG ISLAND SECTION'S PROFESSIONAL ACTIVITIES COMMITTEE FOR ENGINEERS (PACE) ARE HAVING A JOINT LECTURE ON:

## WELCOME TO MARS

*A Conversation and Book Signing with **BUZZ ALDRIN***



### DATE:

Friday, October 23, 2015

### LOCATION:

**Cradle of Aviation Museum**

Charles Lindbergh Blvd, Garden City, NY

### TIME:

7:00 PM

### COST:

Admission \$20.00, Members \$15.00.

For more info for this event call 516-572-4066

### PLEASE NOTE:

Mr. Aldrin will only be signing copies of Welcome to Mars and all books must be purchased at the Cradle's museum store. Ticket buyers for the discussion will receive priority placement on the book signing line.

### REGISTRATION/COST:

Admission \$20.00, Members \$15.00. For more info for this event call 516-572-4066 (M-F from 10AM-4PM). More info online at: **Welcome to Mars - A Conversation and Book Signing with Buzz Aldrin.**

### LOCATION:

This event will be held at the Cradle of Aviation Museum, Charles Lindbergh Blvd in Garden City. Their website can be found at: [www.CradleOfAviation.org](http://www.CradleOfAviation.org)

### DIRECTIONS:

Meadowbrook Parkway to exit M4, follow signs to Museum Row/Coliseum which will put you on Charles Lindbergh Blvd, stay on Charles Lindbergh Blvd. to the second traffic light and turn right into the parking lot. For additional directions and map check: [www.cradleofaviation.org/plan\\_your\\_visit/directions.html](http://www.cradleofaviation.org/plan_your_visit/directions.html)

### IEEE SEMINAR COORDINATOR:

Mr. Nikolaos Golas, Chair PACE (Professional Activities Committee for Engineers), IEEE LI Section

### ABSTRACT:

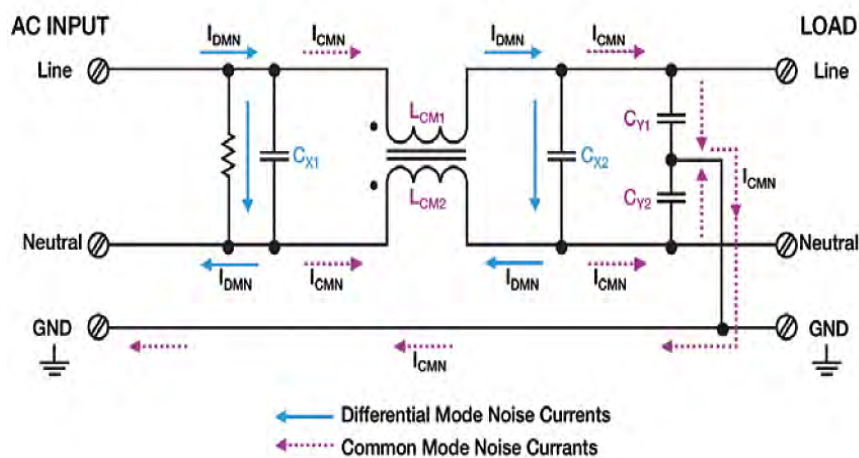
On Friday, October 23rd, the Cradle & PACE are pleased to present a conversation and book signing with Buzz Aldrin. The book is titled: Welcome to Mars: Making a Home on the Red Planet – by Buzz Aldrin and Marianne Dyson. Space is still the final frontier and Mars continues to make news and attract generations of young people. In this fascinating book, hero-astronaut Buzz Aldrin challenges curious kids to think about Mars as not just a faraway red planet but as a possible future home for Earthlings!

What will your new home be like? How will you get there? What will you eat for breakfast? Find out what life might be like far, far from Earth as you navigate your way through this fun and fascinating book. What kid wouldn't want to blast off with him on this (literary) journey!



The Long Island Chapter of IEEE EMC Society  
is presenting a lecture titled:

## ***NOT ALL CAPACITORS ARE CREATED EQUAL: CONSIDERATIONS IN CHOOSING THE PROPER CAPACITOR FOR EMI APPLICATIONS***



### **DATE:**

Wednesday,  
November 4, 2015

### **PRESENTED BY:**

**Jon A. Rhan,**  
Field Application Engineer,  
Kemet Electronics

### **LOCATION:**

**BAE Systems**  
450 Pulaski Road, Greenlawn, NY

### **TIME:**

6:00 PM - Pizza and Beverages  
6:30 PM - Presentation

### **WHO SHOULD ATTEND?**

Individuals interested in learning about capacitor selection as it pertains to EMI filtering.

### **ABSTRACT:**

Capacitors and EMI. In this presentation, we will discuss the different dielectrics available to the engineer and their pros and cons. We will then discuss EMI suppression using capacitors, filters and some other technologies. What can we do with drawing power in series with the mains? How do the parts fail? What are the differences between the capacitors? Not all capacitors are created equal. There are many considerations in choosing the proper capacitor for EMI applications. You will learn about those considerations and see KEMET's online WEBSPIICE tool to help determine what capacitors to use in an EMI/EMC network on a DC power rail. What does that impedance look like?

### **REGISTRATION:**

To register please visit the calendar page of the IEEE Long Island Website, [WWW.IEEE.LI](http://WWW.IEEE.LI), click on the registration link, and fill out the form. Registrants must be US citizens.

### **SPEAKER BIO:**

Jon A. Rhan is a field application engineer for KEMET Electronics providing technical assistance to design engineers on the east coast. His background is in automotive power electronics with a focus on power supplies and anti-lock brake systems. His power supply ICs were designed into most GM vehicles from 1990 through the early 2000's. Well versed in quality management system and ISO9000. He provided simulation support and taught simulation seminars for Mentor Graphics for many years. Jon graduated from Penn State University with a BSEE and also holds an MBA from Southern New Hampshire University. In his spare time, Jon enjoys genealogy and his family.

### **LOCATION:**

This lecture will be held at BAE Systems located at 450 Pulaski Road, Greenlawn, NY. The facility is located just east of Park Ave (Suffolk County Rte 35) on Pulaski Road.

### **SEMINAR COORDINATORS:**

Mr. Sandy Mazzola, BAE Systems Inc (Greenlawn). Mr. Robert De Lisi, Underwriters Laboratories





Leveraging Technology for a Better Tomorrow

## METSAC MEMBERS:

METSAC chair Raghu Rangunandan is delighted to announce the following below offer for all IEEE METSAC members.

It is a terrific chance to go to the Intrepid Air & Space Museum on IEEE day and bond with other METSAC IEEE members.

Please note that October 6, 2015 is a Tuesday. Registration is only free for the first 500 who register.

# IEEE Day: Intrepid Museum

**IEEE Day 2015 is going to be held on Tuesday, 6 October.** This will be the sixth anniversary of our members celebrating the anniversary of the first time IEEE members gathered to share their technical ideas in 1884.

Since the first IEEE Day event in 2010, the number of events worldwide has grown over 600% from 80 to over 520! To help grow this even larger we are looking forward to more events/activities in Regions 1-6, WE NEED YOU!

This is a wonderful opportunity for you to connect your members to IEEE on a local and global scale. Section and Chapter leadership engagement is critical to IEEE Day's success! Start collaborating with your volunteers and student branch leaders to plan and commemorate the day. No idea/event is too small.

**USS Intrepid Sea, Air, and Space Museum on IEEE Day (Tuesday Oct. 6, 2015).** The IEEE Foundation offers free entry to this museum that day for the first 500 IEEE members (and one guest each). Please register using the IEEE Intrepid Day link below to qualify for free entry.

### IEEE INTREPID REGISTRATION

Registration closes on Oct. 4, 2015 or when 500 members have registered. An additional fee is required to enter the Space Shuttle Pavilion (\$7 for adults and \$5 for children).

Please note that IEEE members receive complementary admission for themselves and for one guest (for the first 500 registered participants). Additional guests may purchase admission tickets upon arrival (adults: \$24, seniors/students: \$20; youth \$19; children: \$12). The museum is open from 10:00 am until 05:00 pm. The last tickets are issued at 04:00 pm. Access to the Space Shuttle Pavilion is \$7 for adults and \$5 for children.

**CLICK HERE TO REGISTER USING THE VTOOLS REGISTRATION LINK IEEE VTOOLS REGISTRATION**

This exclusive IEEE Day event is made possible by an ongoing relationship between IEEE Foundation and The Intrepid Sea, Air, and Space Museum. More information on the IEEE Foundation can be found at [www.ieeefoundation.org](http://www.ieeefoundation.org).

**WHEN:** October 6, 2015

**TIME:** 10:00 am to 5:00 pm (7.00 hours)

**WHERE:** Intrepid Museum, Pier 86 W 46 St & 12th Ave, NY, NY



**IEEE Day:** Celebrating the first time in history when engineers worldwide and IEEE members gathered to share their technical ideas in 1884. IEEE Day's theme is: "Leveraging Technology for a Better Tomorrow". While the world benefits from what's new, IEEE focuses on what's next. IEEE Day 2015 is the 6th edition of the same. Worldwide celebrations demonstrate the ways thousands of IEEE members in local communities join together to collaborate on ideas that leverage technology for a better tomorrow. We celebrate IEEE members!

The IEEE Day team is made up of student volunteers, young professionals, and staff. Together, they work to assure that this year's celebration will be even bigger and more impressive than the last four editions. The principle task of the IEEE Day team is to initiate, motivate, and coordinate events and efforts to celebrate this day worldwide.





## IEEE GLOBAL HUMANITARIAN CONFERENCE

IEEE Global Humanitarian Conference (GHTC) is the perfect venue for enthusiasts from all backgrounds to connect, share and address critical issues for the benefit of the humanitarian endeavor worldwide. Join us in Seattle, WA, USA as we:

- Enable a global sharing of skills, knowledge, networking in the humanitarian and emergency management fields
- Highlight humanitarian technologies that promote successful practice, attract practitioners, and guide future research
- Positively impact billions of people around the world

IEEE GHTC is the place to be whether you have experience to share, are looking for opportunities to join, or simply want to understand humanitarian work. In its 5th year, sponsored by IEEE Region 6 and IEEE Seattle Section, the conference is dedicated to Advancing Technology for Humanity with a focus on essential areas including energy, health, disaster management, connectivity, agriculture, and education.

## REGISTRATION

Register today to participate in an extensive, vibrant, and innovative technical program with likeminded individuals across the world.

<http://www.ieeeghtc.org/registration/>

Advanced Discount Registration ends September 6:

Regular Registration ends October 7

On-Site Registration & One Day Passes Available

[www.ieeeghtc.org](http://www.ieeeghtc.org)

## CONFERENCE HIGHLIGHTS:

- Maurizio Vecchione, Sr. Vice President of Global Good & Research Plenary
- The Future of Humanitarian Technology with a panel of experts from NGOs, the United Nations, and the Red Cross
- The Internet of Things (IoT) for Humanity with a panel of industry partners
- IEEE SIGHT Gaetano Borriello Memorial Symposium on Humanitarian Technology
- UNESCO 70th anniversary celebration.
- IEEE Smart Village workshop on Energy, Education, and Empowerment

## INTERACTIVE SPECIAL SESSIONS THAT SUPPORT IN-FIELD HUMANITARIAN EFFORTS:

- Open Data Kit Workshop learn to collect data and build data services for many humanitarian efforts
- Entrepreneurship and Education engage in workshops with interactive dialogue on grass-roots business development and collaborative educational strategies for entrepreneurs and practitioners
- Demonstrations and Exhibitions see and experience new technologies in water and sanitation, energy, and communication and connectivity technologies





**Center of Excellence**  
WIRELESS AND INFORMATION TECHNOLOGY  
AT STONY BROOK UNIVERSITY

**The 12th International Conference and  
Expo on Emerging Technologies for a  
Smarter World (CEWIT 2015)**

## CEWIT 2015

OCTOBER 19 & 20, 2015,  
MELVILLE MARRIOTT, MELVILLE, NEW YORK



We are pleased to announce the return of the **CEWIT** Conference to Long Island after a very successful 2014 event that welcomed over 500 attendees from 14 countries in 15 unique industries to the two-day program featuring 3 renowned keynotes, 55 academic and industry experts in 8 breakout sessions, an additional 13 distinguished intellectual property lawyers and venture capital professionals in 3 panels, 4 parallel big data and data science tutorials, and over 65 high quality poster presentations.

**CEWIT 2015** will continue its reputation of hosting the premier international conference on the development and application of emerging technologies in infrastructure, healthcare, and energy, bringing together academic research and industry innovations at a single forum.

Originally known as the International Conference on Cutting-Edge Wireless and Information Technologies, this conference is organized by the New York State Center of Excellence in Wireless and Information Technology (**CEWIT**) located at Stony Brook University in New York. Mark Your Calendars!

FOR **CEWIT 2015** CONFERENCE INFORMATION, CALL FOR PAPERS AND TO REGISTER, VISIT:

**[www.cewit.org/conference2015](http://www.cewit.org/conference2015)**

## IEEE NJ COAST SECTION

# 2nd CONFERENCE on MOBILE SECURITY/ CYBER SECURITY and PRIVACY

NOVEMBER 4, 2015  
RARITAN CENTER, EDISON, NEW JERSEY



### WHO SHOULD ATTEND

This conference is geared to IEEE members, non-members, students, and guests who would like to review the state of the art in security, cyber security, and privacy and become aware of issues and directions of research, academic, and practical solutions.

### INDUSTRY SPONSORSHIP

Mobile security, cyber security, and privacy have become more critical in our business, government, travel, healthcare, and every-day lives. With society's exploding dependence on mobile devices and wireless technologies, effective security solutions have become increasingly important in everyday life. Participate in the upcoming high-impact, 1-day conference as Industry sponsor (Platinum or Gold or Silver) or Table or provide product demo or product presentation. Take some time with us to catch up on the latest trends, review the issues, collaborate with colleagues in industry and research, and take away practical ideas to enhance security of your world.

### WHEN:

November 4, 2015

### WHERE:

Raritan Center  
The Edison Hotel & Conference Center,  
3050 Woodbridge Ave., Edison, NJ 08837

### TIME:

8:00 AM - 6:00 PM

### REGISTRATION:

<https://meetings.vtools.ieee.org/m/35184>

Last year, during our first conference on security, we had distinguished keynote speakers, invited presenters and over 110 attendees with participation of over 20 vendors. This year, we have chosen a conference facility to accommodate a doubling of attendees and vendor participation. This facility is centrally located with easy access by tri-state attendees and others.

## KEYNOTE SPEAKERS



### DR. ED AMOROSO

Senior Vice President,  
Chief Security Officer,  
AT&T Services, Inc.

**From the Enterprise  
Perimeter to a Virtual,  
Distributed, Secure Cloud**



### DONNA DODSON

Chief Cybersecurity Advisor,  
National Institute of Standards  
and Technology (NIST)

**Best Practices for Secure,  
Privacy Preserving Mobile  
Networks: A NIST Perspective**



SAVE THE DATE

FINAL PAPER  
ANNOUNCEMENT  
10/07/2015

WIE  
SUMMIT  
USA  
EAST  
2015

NOVEMBER 6 - 8 2015  
PHILADELPHIA PA

CALL FOR PAPERS - SEE WEBSITE FOR MORE INFORMATION

[SITES.IEEE.ORG/WIE-SUMMIT-USA-EAST](http://SITES.IEEE.ORG/WIE-SUMMIT-USA-EAST)

We are excited to announce the **1st IEEE Women In Engineering (WIE) Summit USA East (Nov 6-8, 2015 in Philadelphia, PA)**, which will focus on developing and improving leadership skills for individuals at all stages of their careers. Attendees will have the opportunity to hear inspirational and empowering talks presented by successful leaders from the IEEE-USA North-East region. Emerging technologies will also be demonstrated, engaging attendees to facilitate discussion & potential advancement of STEM outreach class ideas.



## CALL FOR PARTICIPATION TOPICS FOR PAPERS AND PRESENTATIONS:

- Mentoring the next generation of female leaders
- Strategies for increasing equity in power and decision making
- Women as leaders in education, industry, and government
- Development: communication skills in written and spoken word, effective dialog
- Cross-cultural aspects of leadership
- What it takes to be a great leader – qualities that all successful leaders share
- Shaping the future by female leaders
- Training vs inherent skills: can leadership be learned?
- Work-Life balance: family systems traditions and changes
- Leadership development for women: overcoming stereotypes
- The design, implementation, and evaluation of leadership from a structural perspective
- Helping girls and young women become leaders – motivating to empower, empowering to motivate
- Exploring the attrition gap – why do women leave the engineering field and what can be done to prevent it



IEEE Healthcare Innovation



Point-Of-Care Technologies  
Conference

## NIH-IEEE 2015 STRATEGIC CONFERENCE ON HEALTHCARE INNOVATIONS AND POINT-OF-CARE TECHNOLOGIES FOR PRECISION MEDICINE

NOVEMBER 9-10, 2015

NIAID CONFERENCE CENTER, 5601 FISHERS LANE, BETHESDA, MD 20852

The NIH-IEEE Strategic Conference on Healthcare Innovations and Point-of-Care (POC) Technologies for Precision Medicine will focus on defining clinical translation needs and technology solutions. This 2 day conference will facilitate stakeholder – clinicians, healthcare providers, industry experts, innovators, government representatives, researchers and students – participation in key sessions. They include clinical needs for precision medicine, enabling technologies for POC, regulatory issues for POC devices, and sustainable global business models to support POC technologies in resource limited environments.

Federal funding opportunities and resources will be showcased, and presentations on recent healthcare innovations, point-of-care technologies, and industry exhibits will be featured. Stakeholders will have the opportunity to discuss barriers and challenges in the broad delivery of accurate and affordable healthcare. Breakout sessions will lead to strategic planning on future directions to enhance resources and collaborations for clinical POC technologies.

**WHO SHOULD ATTEND:** All stakeholders in healthcare innovations, delivery, maintenance, services and management are specifically encouraged to participate in the conference. Researchers, clinicians and students engaged in scientific and clinical research related to healthcare applications are invited to attend. Industries and businesses dealing with healthcare products, devices, pharma and payers, along with life-science related sponsoring agencies and foundations are welcome to participate.

Extended abstracts in the form of 1-page papers of all invited and accepted presentations will be included in the Conference Program Book. The deadline for submission of 1-page papers is September 1, 2015. Full papers on the presentations will be invited for publication in a special issue of the open access IEEE Journal of Translational Engineering in Health and Medicine in early 2016.

### CALL FOR PAPERS:

#### IMPORTANT DATES:

1 Page Paper Submission Deadline: **September 1, 2015**

Author Notification of Acceptance: **October 1, 2015**

Early Conference Registration Opens: **September 1, 2015**

Conference Website:

<http://hipt.embs.org/2015/>

Download the Call for Papers (PDF):

[Click Here](#)

### CONFERENCE THEMES TO WHICH PAPERS CAN BE SUBMITTED:

- Point-Of-Care (POC) Technologies Clinical Translational of Healthcare Innovations
- POC Technologies for Home-Based Applications
- POC Technologies for Slightly Trained Operators
- POC Technologies for Clinical and Healthcare Facilities
- POC Technologies for Intensive-Care Applications
- Personalized, Preventive and Precision Medicine
- Global Healthcare Challenges



**National Institute of Biomedical Imaging  
and Bioengineering**

*Creating Biomedical Technologies to Improve Health*



**IEEE**



LONG ISLAND SECTION

## International Energy & Sustainability Conference 2015

at Farmingdale State College

*Energy, Water and Food Nexus for a Sustainable Future*



Our Renewable Energy and Sustainability Center at Farmingdale State College is pleased to invite you to our **Fourth International Energy and Sustainability Conference** on Friday, November 13th at 8:00AM in Roosevelt Hall. I am honored to extend this invitation to Solar Liberty to explore how we can integrate sustainable alternative energy sources and shape the future of our planet.

The Conference theme will focus on a sustainable future with an emphasis on Energy, Water, and Food Nexus. We welcome scholars and University representatives visiting with us to share in the latest research and achievements in renewability and sustainability. The conference proceedings will be published in the **IEEE Xplore**.

This conference will act as a bridge between original manufacturers and service providers with regard to all relevant technologies. Exhibitors will have an opportunity to display their products and services in an open forum and attendees are encouraged to view a wide range of exhibits. A network of professionals will be in attendance and the potential for job opportunities in the field will be prominent.

Academic scholars will be in attendance from the US, Europe and Asia to share their latest research and achievements in renewable energy and sustainability. Domestic and International University representatives will be exposed to the latest technologies to expand current curriculums with sustainable products.

We hope you can join us on November 13th and participate in Farmingdale State College's ongoing commitment to Renewable Energy and Sustainability. Please visit the link below for more information:  
<http://www.farmingdale.edu/academics/centers-institutes/resc/conferences/iesc2015/index.shtml>

### Farmingdale State College

State University of New York

**FOR REGISTRATION INFORMATION  
PLEASE VISIT OUR WEBSITE:**

<http://www.farmingdale.edu/academics/centersinstitutes/resc/conferences/iesc2015/iesc2015registration.shtml>



**IEEE**

INTERNATIONAL CONFERENCE ON  
COMPUTING, COMMUNICATION & SECURITY



**December 4-6, 2015**

Le Meridien · Pointe Aux Piments · Pamplemousses, · Mauritius · Phone: (230) 204 3333 · Fax: (230) 204 3304

ICCCS is aimed to be an annual conference conceptualized to foster students, researchers, academicians and industry persons in the field of Computer Science and Engineering, Communication and Security. ICCCS 2015 will be organized at Le Meridien, Mauritius supported by Bipin Tripathi Kumaon Institute of Technology, Dwarahat and IEEE Mauritius on 4-6 Dec, 2015 to attract a large number of delegates from all over the country and abroad and will consist of very high quality technical sessions and tutorials.

The 2-day conference will include invited keynote & oral presentations. ICCCS 2015 will provide a forum for researchers and engineers to exchange innovations, research advancements in Innovative Computing, Communication & Security. ICCCS 2015 also provides the attendees the chances to identify the emerging research topics, as well as the future development directions in all field of Engineering. The primary goal of the conference is to promote research and developmental activities in advanced Computing, Communication & Security challenges.

## MAIN CONFERENCE THEMES

- Data Communication and Computer Networks
- Big Data Analytics and Data Mining Information Security
- ICT & Education

## CONFERENCE DETAILS

**IEEE Conference Number:** #37098

**LINK:** [www.iccs.in](http://www.iccs.in)

**DATE:** December 4-6, 2015

**VENUE:** Le Meridien, Pointe Aux Piments, Pamplemousses, Mauritius.

**ICCS**

## IMPORTANT DATES

**Author(s) Notification:**  
September 30, 2015

**Final Manuscript Due & Registration:**  
October 15, 2015

## CALL FOR PAPERS

### PAPER SUBMISSION FORMAT

Papers for both oral and poster presentations should confirm to the IEEE format and specifications. All submissions must be in English only. Authors are invited to submit full paper (Maximum 8 pages, double-column A4) as PDF using the IEEE template. Papers will be published in the IEEE Xplore Digital Library. The IEEE paper template can be downloaded from the link given below.

[www.ieee.org/conferences\\_events/conferences/publishing/templates.html](http://www.ieee.org/conferences_events/conferences/publishing/templates.html)

### PAPER SUBMISSION DETAILS

All papers must be submitted electronically through Easy Chair at:  
<https://easychair.org/conferences/?conf=iccs2015>

*At least one of the authors of each accepted paper must register and attend the conference, in order for the paper to appear in the conference proceedings.*



**IEEE**



LONG ISLAND SECTION





## BHI-2016 International Conference on Biomedical and Health Informatics "Integrative informatics for precision and preventive medicine"



Las Vegas 25th-28th Feb 2016



## BHI-2016 INTERNATIONAL CONFERENCE ON BIOMEDICAL AND HEALTH INFORMATICS

The IEEE International Conference on Biomedical and Health Informatics (BHI) is a special topic conference of IEEE Engineering in Medicine and Biology Society (IEEE-EMBS). The main theme of the BHI2016 is the "Integrative informatics for precision and preventive medicine." Advancing health informatics has been identified as a grand challenge for engineering in the 21st century by the National Academy of Engineering. Maintaining and improving human health will require integrative & novel informatics solutions to better translate discovery into clinics, re-engineer care practices, and integrate big data of various health networks.

The BHI2016 will provide a unique forum to showcase enabling technologies of computing, devices, imaging, sensors, and systems that optimize the acquisition, transmission, processing, storage, retrieval, visualization, and analysis. It will share how integrative BHI informatics solutions can be used in novel applications to improve human health, and how the deployment of integrated bioinformatics, m-Health, e-Health, and tele-Health with Enterprise IT can enable precision and preventive medicine

*BHI'2016 welcomes original submissions that have not been published or under review by researchers, clinicians, and industrial partners from the biomedical, life sciences, medical, and industrial communities. Examples of relevant topics include, but are not limited to the following few tracks:*

- Sensor Informatics
- Biomedical Imaging Informatics
- Foundation of BHI and Bioinformatics for Precision Medicine
- Clinical Informatics
- Behavior and Health Informatics
- Big data analytics for health care
- Wearable, implantable devices, printable/ flexible bioelectronics and 3D printing
- Body sensor networks
- Context awareness, multi-sensor data fusion
- Data inference, mining, and trend analysis
- Quality of service, trust, security, and light-weight communication protocols
- Sensor-based mHealth App
- Medical image processing and visualization
- Content-based image retrieval
- Cognitive computing for healthcare delivery and disease management
- Teleradiology
- Data breach prevention and security
- E-commerce solutions for healthcare
- Telehealth and Telemedicine
- Health data acquisition, transmission, management and visualization
- Information technologies for healthcare delivery and management
- Healthcare communication networks
- Knowledge discovery & decision support
- Translational bioinformatics
- Outcomes research applications
- Public health management solutions
- Informatics for chronic disease management
- Formalism for healthcare modeling and informatics solutions
- Platforms/solutions for precision medicine
- Healthcare modeling and simulation
- Algorithms for Natural language processing & clinical pattern recognitions
- Health information systems and convergence of health

### CALL FOR PAPERS

#### PAPER SUBMISSION DEADLINE

Oct. 26, 2015 (Monday)

#### NOTIFICATION OF ACCEPTANCE

Dec. 18, 2015 (Friday)

#### CAMERA-READY FINAL SUBMISSION

Jan. 8, 2016 (Friday)

<http://bhi.embs.org/2016>





# PLAIN TALK

The IEEE Power & Energy Society's Practical Education Courses for Industry Professionals.



## Electric Power Education for Industry Professionals!

- Are you a professional working in or with the Power Industry who would like to learn more about the Electric Power System?
- Would you like to learn more about the technical aspects of the industry in a format that is geared to non-technical professionals?
- Are you an engineer new to the industry, or working in another industry who would like to transition to the Power Industry?

If you answered YES to any of these questions, register NOW for "Plain Talk about the Electric Power Industry." These courses will provide you with the practical knowledge you need to help you understand the electric power system and enable you to apply that knowledge to your job so you can work more effectively.

**For Course Brochures and To Register:**  
Visit [www.ieee-pes.org/plaintalk](http://www.ieee-pes.org/plaintalk)

Contact LaToya Gourdine, Education Administrator, IEEE Power & Energy Society  
at (732) 981-2876 or via email [l.gourdine@ieee.org](mailto:l.gourdine@ieee.org)

## SAVE THE DATE FOR ONE OF OUR 2015 EVENTS:

**Pittsburgh, PA:** October 6-8, 2015

**Charlotte, NC:** Nov 10-12, 2015



## IEEE CONSULTANTS NETWORK OF LONG ISLAND

### THE IEEE CONSULTANTS NETWORK OF LONG ISLAND (LICN)

is a nonprofit professional organization affiliated with the Institute of Electrical and Electronics Engineers. Our members include dozens of electrical, electronic, mechanical and software engineers with expertise in over 65 categories of technology and business. All are members of the IEEE and adhere to the IEEE professional codes of ethics.

MEMBER  
IEEE L.I. CONSULTANTS NETWORK



#### PETER BUITENKANT CONSULTANT

MICROPROCESSOR HARDWARE / SOFTWARE DESIGNS  
DIGITAL CIRCUIT DESIGN • TRAINING COURSES

WEBSITE: [www.peterbui-consult.com](http://www.peterbui-consult.com)

24 Thorngrove Lane  
Dix Hills, NY 11746

VOICE: (631) 491-3414  
EMAIL: [peterbui@optonline.net](mailto:peterbui@optonline.net)

(516) 378-0979

[ambertec@ieee.org](mailto:ambertec@ieee.org)

*Ambertec, P.E., P.C.*

#### John Dunn – MSEE, PE

Member IEEE Consultants Network of Long Island

[www.licn.org/Profile/JDunn](http://www.licn.org/Profile/JDunn)

181 Marion Avenue

Merrick, NY 11566

Real Time Embedded - Financial Services - Transit  
Architecture - Object Oriented Design - Java - C/C++  
Full Stack - Internet of Things - Mobile Applications  
Unix/Linux - Windows - Compilers - Communications



#### EARLY ELECTRONICS

Hardware / Software Consulting Services

Chris Early, BSEE, MSCS, PE  
154 Hempstead Avenue  
Rockville Centre, NY 11570

[unixdev@ix.netcom.com](mailto:unixdev@ix.netcom.com)  
Voice: (516) 764-1067  
Fax: (516) 764-1124

### SIGNALS IN MOTION

Len Anderson  
President



PHONE: 718-279-3953  
FAX: 509-471-6496

E-MAIL: [LenAnder@SignalsInMotion.com](mailto:LenAnder@SignalsInMotion.com)  
WEBSITE: [www.SignalsInMotion.com](http://www.SignalsInMotion.com)

BODNER & O'ROURKE, LLP  
PATENTS, TRADEMARKS, COPYRIGHTS  
AND RELATED MATTERS

#### GERALD T. BODNER PATENT ATTORNEY

425 BROADHOLLOW ROAD, SUITE 120  
MELVILLE, NY 11747  
TEL: (631) 249-7500  
FAX: (631) 249-4508  
[gbodner@bodnerorourke.com](mailto:gbodner@bodnerorourke.com)

### ADVANCE IN TECHNOLOGY, INC.

Electronic Design — Analog, Digital, RF and Systems

JOHN LIGUORI  
CEO, MSEE  
631-865-2423

82 Westwood Avenue, Deer Park, NY 11729

[www.advance-in-technology.com](http://www.advance-in-technology.com)

[JLiguori@advance-in-technology.com](mailto:JLiguori@advance-in-technology.com)

#### Broad Shoulder Consulting LLC

Electronics, Mechanics, Optics, Software  
[www.broshoco.com](http://www.broshoco.com)

Special Expertise in Medical Imaging  
System Design, Prototyping and Production  
Serving Start-ups and Technology Investors

Dmitriy Yavid  
Founder  
631-706-4696  
[dy@broshoco.com](mailto:dy@broshoco.com)



Broad Shoulder Consulting, LLC  
Long Island High Tech Incubator  
25 Health Science Drive  
Mail Box 320  
Stony Brook, NY 11790-3350

93 Steven Place West

Fred  
Hauppauge, NY 11788

Proposals, Contracts & Specification Development  
Innovative Creation, Electro-Mechanical  
Analog & Digital Circuit/System Design  
Wireless, Motion, Occupancy Sensors  
System Analysis/Documentation  
Commercial/Military Product Design  
Sonar Systems and Acoustic Signal Processing  
Security, Marine & Energy Saving, ROHS, UL Testing  
Clever Inventions, Algorithm, IP & Patent Development



[fred@fredkatzconsulting.com](mailto:fred@fredkatzconsulting.com)

[www.fredkatzconsulting.com](http://www.fredkatzconsulting.com)

Fred Katz  
President

(631) 724-7702

Electronics  
Consultant

Memberships: IEEE Senior Life Member, IEEE LI Consultants Network, LI Metal  
Workers, Mensa Society, NYS Professional Inventors, Suffolk County Inventors

EXPERT WITNESS

TECHNICAL INVESTIGATOR

#### MARTIN KANNER AE, EE, MEE

PRODUCT LIABILITY  
MACHINE INJURY

FIRE DAMAGE INJURY  
LIGHTNING DAMAGE



[sixxpoppy@juno.com](mailto:sixxpoppy@juno.com)

(516) 681-4346

POWER-CONTROLS DIV.  
42 Glenwood Road  
Plainville, NY 11803

EEDEngineering - Quality Software/Testing Solutions

Andrew Franklin Baxt  
Managing Director of Engineering

Phone: 516-678-6563  
Mobile: 561-558-3499

Oceanside, New York 11572  
[Andrew.Baxt@EEDEngineering.com](mailto:Andrew.Baxt@EEDEngineering.com)  
[www.EEDEngineering.com](http://www.EEDEngineering.com)

### Carl Meshenberg

Technology Consulting Services

Electronic Product Development  
Project Management  
Marketing Strategies  
Contract Development & Oversight

Mobile: 516 383-2595  
[carl.jmesh@gmail.com](mailto:carl.jmesh@gmail.com)

### PROGRAMMING PLUS®

2503 AVENUE X  
BROOKLYN, NY 11235

#### HARDWARE & SOFTWARE CONSULTING

- ADMINISTRATION • DATABASES • UNIX
- DEVELOPMENT • NETWORKS • LINUX
- ENGINEERING • INTERNET • VMS
- INTEGRATION • SECURITY • WINDOWS

For expert assistance, contact **Robert Weiner**, EE, PE, at:

Tel: (718) 648-6902 Email: [info@progplus.com](mailto:info@progplus.com)

Fax: (718) 648-7449 Web: [www.progplus.com](http://www.progplus.com)

## IEEE Consultants Network of Long Island

PO Box 411, Malverne NY 11565-0411

[www.licn.org](http://www.licn.org)

(516) 379-1678

Affiliated with the Institute of Electrical and Electronics Engineers, Inc.



# IEEE

Be sure to visit our web Blog at:  
[licn.typepad.com/my\\_weblog](http://licn.typepad.com/my_weblog)



# IEEE



LONG ISLAND SECTION

## blueprint



### H2M ANNOUNCES ADDITION OF INTERIOR DESIGN AND SPACE PLANNING

**H2M architects + engineers** is pleased to announce the addition of interior design and space planning to its roster of architectural services.

Interior design is a multifaceted profession that includes conceptual development, communication, and the management and execution of the design. Space planning is a critical part of the interior design process, where the design professional hones the program requirements to lay out interior spaces based on function for people and process, and then later adds the equipment and furniture.

"As the firm and our client base grew, we started receiving more requests for interior design and space planning services," said Joe Mottola, H2M's Director of Architecture. "We always want to provide a complete range of services for our clients, so we saw tremendous value in making this investment."



With the addition of the service, H2M has brought in Allison Linsky as the firm's senior interior designer and space planner. She joins H2M with over 30 years' experience as an interior designer, and has an established record of accomplishments in corporate and commercial space planning, interior design, and construction. She was most recently principal of Woodbury-based William Allison Design Associates, Ltd.

"I am excited for the opportunity to help develop H2M's interior design and space planning department," Ms. Linsky said. "When you are able to build something from the ground up, with a company of this size, you have unlimited potential."

Ms. Linsky will be working with H2M's three architecture studios to integrate design concepts, materials and details, and furniture and finishes to each project.

Ms. Linsky holds a degree in fine arts from Syracuse University and another in interior design from Fashion Institute of Technology. She currently resides in Syosset, NY with her son, Cooper, 15.

### H2M CFO NAMED ACEC TRUSTEE

**H2M architects + engineers** is pleased to announce that Gregory C. Smith, CPA has been named trustee of the American Council of Engineering Companies Retirement Trust (ACEC RT). Mr. Smith is the Chief Financial Officer (CFO) of H2M architects + engineers in Melville.

Mr. Smith's term as trustee will begin on October 1. He will be serving ACEC RT's Region 2, which includes New York, Pennsylvania, Ohio, Indiana, Michigan and northern Wisconsin.

"I am deeply honored to be selected as one of seven trustees across the United States," Mr. Smith said. "I look forward to contributing to the organization and making a positive impact."

In his 28-year tenure with H2M, Mr. Smith has worked his way from controller to CFO. He is a member of the firm's Board of Directors and also serves as a trustee of its 401(k) plan.



ACEC Retirement Trust provides a full spectrum of investment options and retirement plan services for ACEC members and oversees a program that provides retirement plan services for participating ACEC members. Its objective is to deliver positive retirement outcomes for its member companies and their participants. To accomplish this objective, the Trustees and their highly credentialed experts work to develop customized solutions

ACEC consists of council members – numbering more than 5,000 firms representing more than 500,000 employees throughout the country – that are engaged in a wide range of engineering works that propel the nation's economy, and enhance and safeguard America's quality of life. These works allow Americans to drink clean water, enjoy a healthy life, take advantage of new technologies, and travel safely and efficiently. The Council's mission is to contribute to America's prosperity and welfare by advancing the business interests of member firms.

Mr. Smith holds a B.S. in Accounting from St. John's University, and is a member of the American Institute of Certified Public Accountants and the New York State Society of Certified Public Accountants. He resides in Dix Hills, NY with his wife, Kristin, and children, Patrick, Katie and Emily.