

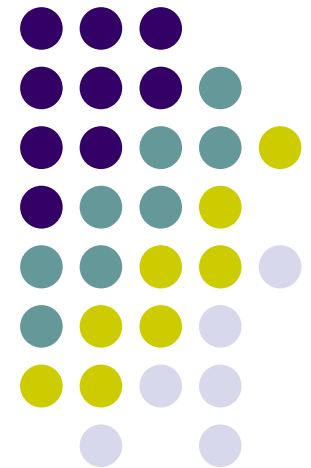


# Bring your VIs to your LabVIEW User Group

Presented by Nick Golas  
Telephonics Corp.  
& Charlie Spitaleri  
ALE System Integration

IEEE I&M Society LI Section &  
Long Island LabVIEW Users Group (LILUG)

Thursday 3/13/2008



# Add Date & Time to Filename



- Creates a path & a filename incorporating the Date & Time from the PC to date and timestamp the filename

**Add Date & Time to Filename LV7.1.vi**

This VI creates a path & a filename incorporating the Date & Time from the Computer to date/ timestamp the filename.

The complete filename path consists of the following 6 sections:  
<Initial Folder Path>+ <Filename Prefix>+ <Date>+ <Time>+ <Filename Suffix>+ <Filename Extension>

The Date enum control (default=abbreviated) supports the following formats:  
Short - 1/21/94  
Long - Friday, January 21, 1994  
Abbreviated - Fri, Jan 21, 1994

The Time boolean control (default=Date & Time) allows to add both Date & Time to the filename or just the Date Only

Field/Word Separator enum control [default=Space ( )] makes the filename more readable. Besides the Space ( ) other separators can be utilized including the Underscore ( \_ ), Dash ( - ), Period ( . ) or None ( )

Filename Prefix string control (default=empty) is an optional string to precede the date and time and is usually used to identify the Program or the Function of the unit e.g. Ground Radar or ABC Program etc.

Filename Suffix string control (default=empty) is an optional string that follows the date and time and is usually used to identify the type of test performed e.g. ESS Test or Vibration Test etc.

Filename Extension string control (default=.txt) is usually a three or more character extension that is appended to the end of the filename

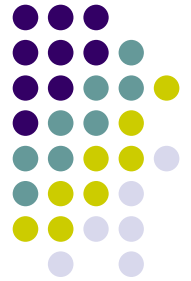
Initial Folder Path (default=c:\test) path control is the folder to be appended to the beginning of the Filename and the folder where the Filename will be saved

## VI Documentation



Filename: Add Date & Time to Filename LV7.1.vi

# Add Date & Time to Filename Front Panel



The complete filename path consists of the following 6 sections:  
<Initial Folder Path>+ <Filename Prefix>+ <Date>+ <Time>+ <Filename Suffix>+ <Filename Extension>

Initial Folder Path (c:\test)  
c:\test

Filename Prefix (empty)  
Radar ABC

Filename Suffix (empty)  
ESS Test

Filename Extension (.txt)  
.txt

Field/Word Separator [Space ( )]  
Underscore ( \_ )

Date (Abbreviated)  
abbreviated

Time (Date & Time)  
Date & Time  
Date Only

Complete Filename Path  
c:\test\Radar\_ABC\_Sat\_Mar\_08\_2008\_4\_24\_17\_PM\_ESS\_Test.txt

Complete Filename Path as String  
c:\test\Radar\_ABC\_Sat\_Mar\_08\_2008\_4\_24\_17\_PM\_ESS\_Test.txt

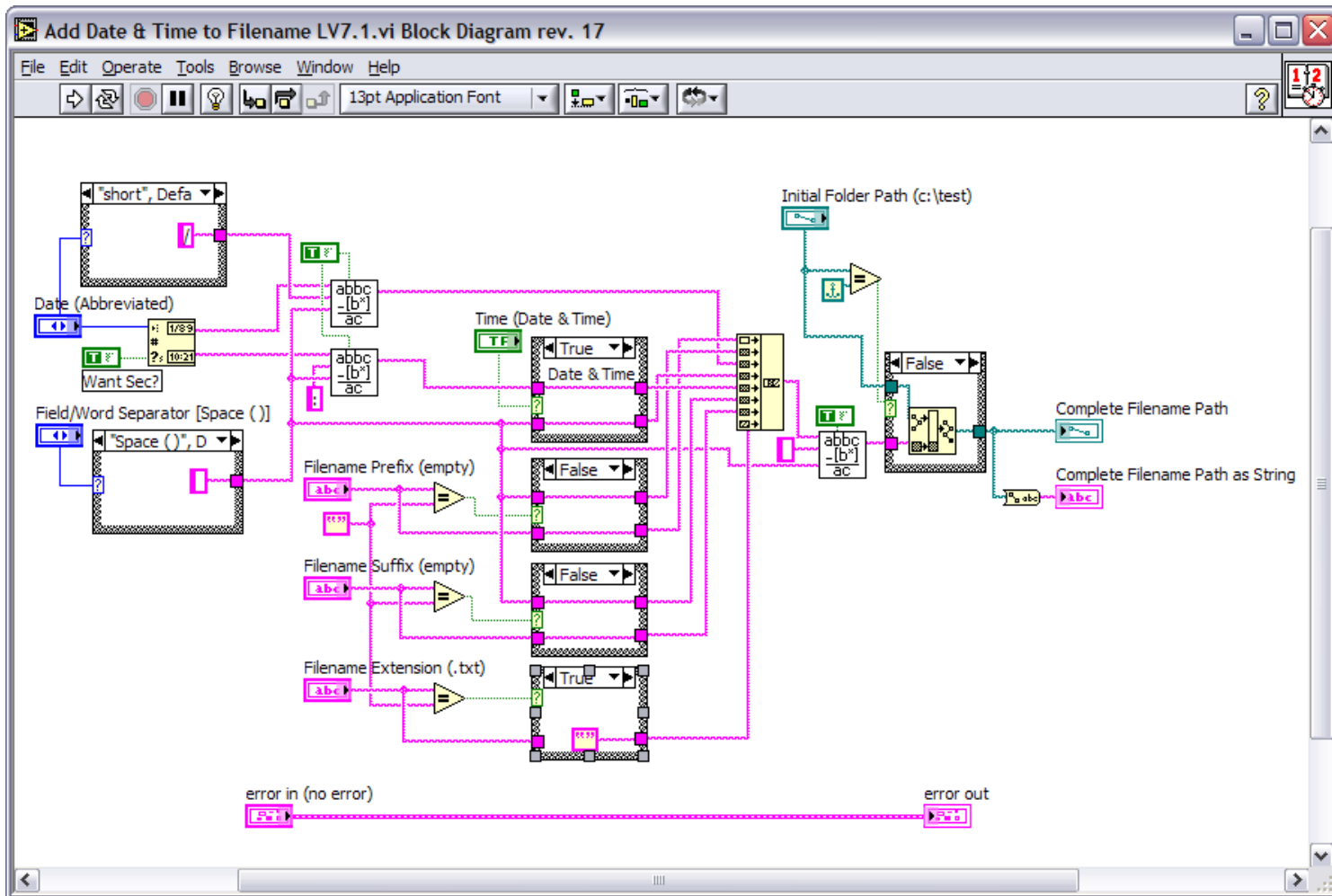
error in (no error)  
status code  
source

error out  
status code  
source

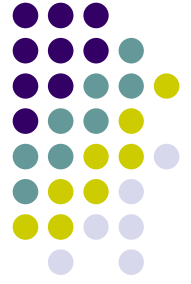
- ✓ Space ( )
- Underscore ( \_ )
- Dash ( - )
- Period ( . )
- None ( )

- ✓ short
- long
- abbreviated

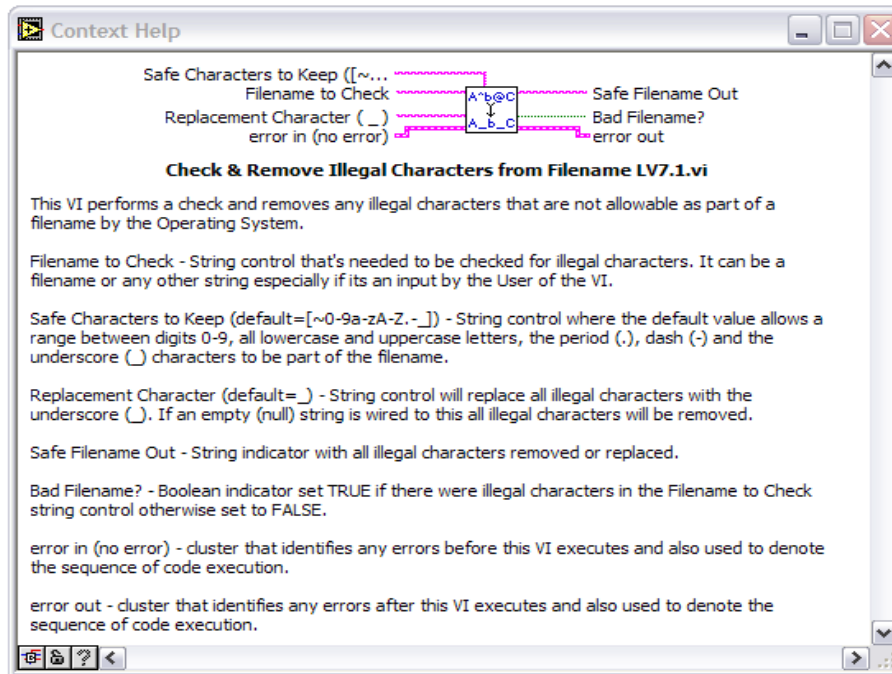
# Add Date & Time to Filename Block Diagram



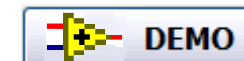
# Check & Remove Illegal Characters from Filename



- Checks and removes any illegal characters that are not allowable as part of a filename by the Operating System. The default value [`~0-9a-zA-Z.-_`] for the **Safe Characters to Keep** string control allows a range between digits 0-9, all lowercase and uppercase letters, the period (.), dash (-) and the underscore ( ) characters to be part of the filename.



## VI Documentation



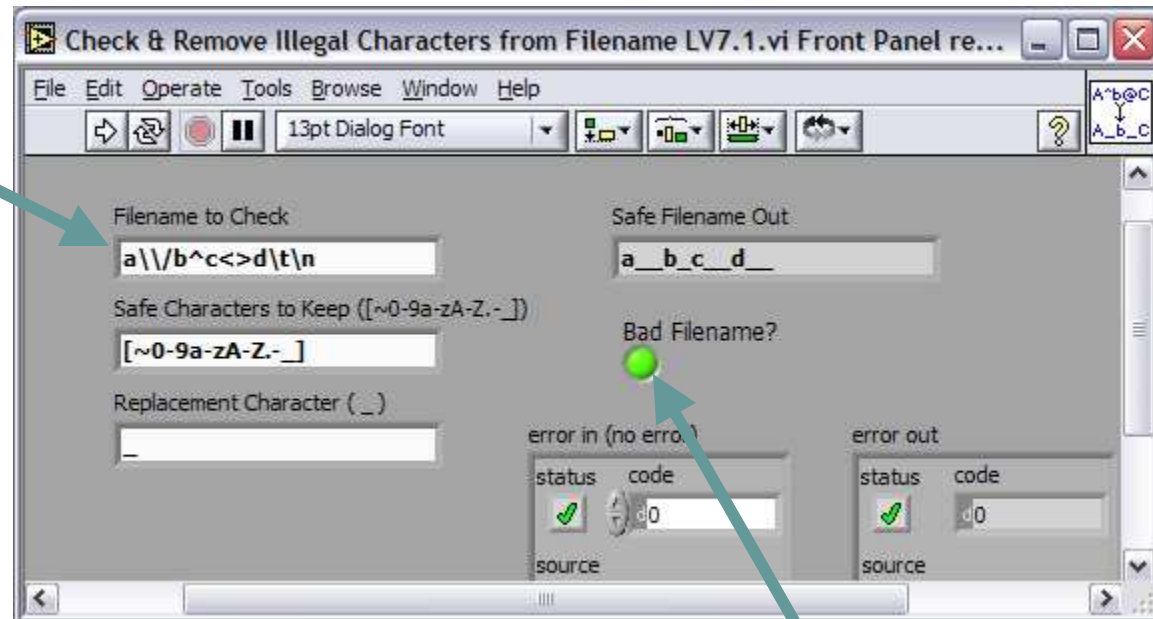
Filename:

Check & Remove Illegal Characters from Filename LV7.1.vi

# Check & Remove Illegal Characters from Filename Front Panel

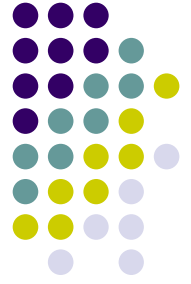


'\` Codes Display enabled

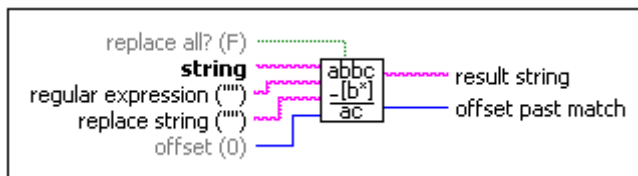
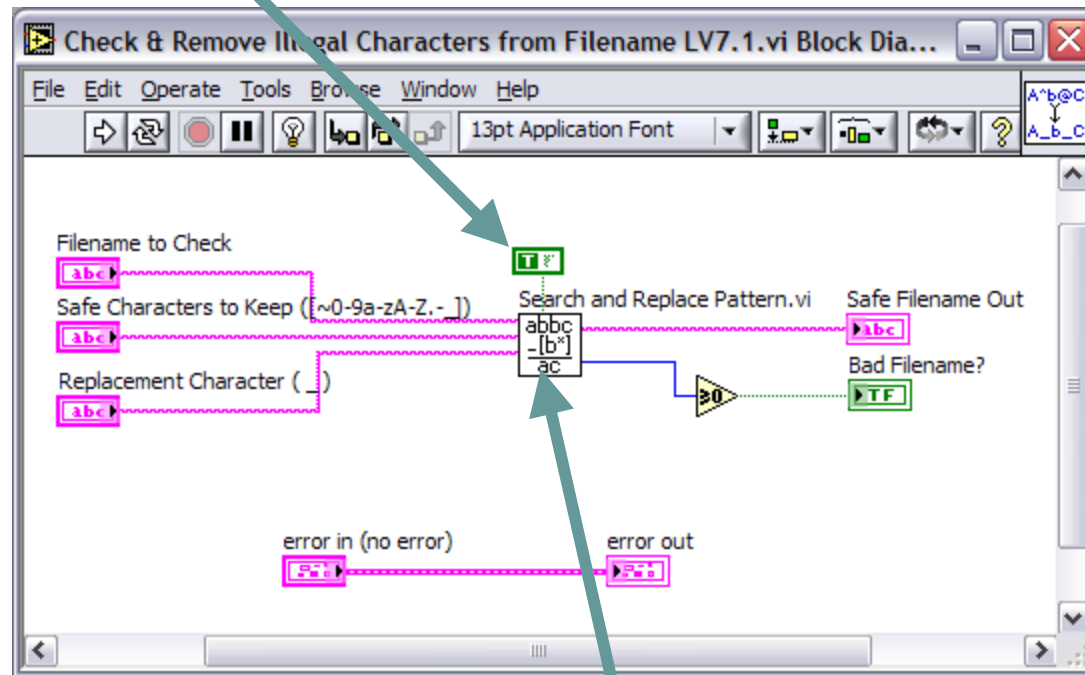


Can be used to verify any string for illegal characters

# Check & Remove Illegal Characters from Filename Block Diagram



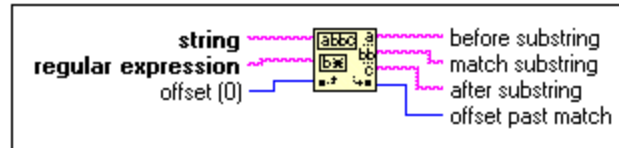
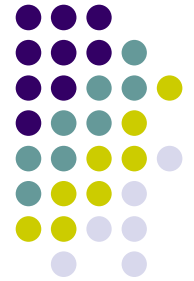
replace all? if TRUE, then the VI replaces all substring occurrences



## Search and Replace Pattern.vi

Searches string for substrings that match regular expression and replaces those substrings with replace string

# Special Characters for Match Pattern



Use these special characters in the regular expression input of the Match Pattern function.

Special Character	Interpreted by the Match Pattern Function As
.	Matches any character. For example, l.g matches lag, leg, log, and lug.
?	Matches zero or one instances of the expression preceding ?. For example, be?t matches bt and bet but not best.
\	<p>Cancels the interpretation of any special character in this list. For example, \? matches a question mark and \. matches a period. You also can use the following constructions for the space and non-displayable characters:</p> <p>\b backspace</p> <p>\f form feed</p> <p>\n newline</p> <p>\s space</p> <p>\r carriage return</p> <p>\t tab</p> <p>\xx any character, where xx is the hex code using 0 through 9 and upper case A through F</p>

**Note:** For LabVIEW v7.1. Newer versions of LabVIEW provide additional capabilities



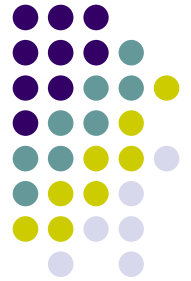
# Special Characters for Match Pattern (Continued)



Special Character	Interpreted by the Match Pattern Function As
<b>^</b>	If <b>^</b> is the first character of <b>regular expression</b> , it anchors the match to the <b>offset</b> in <b>string</b> . The match fails unless <b>regular expression</b> matches that topic of <b>string</b> that begins with the character at <b>offset</b> . If <b>^</b> is not the first character, it is treated
<b>[ ]</b>	Encloses alternates. For example, [abc] matches a, b, or c. The following character has special significance when used within the brackets in the following manner.
	-(dash) Indicates a range when used between digits, or lowercase or uppercase letters; for example, [0-5], [a-g], or [L-Q].
	The following characters have significance only when they are the first character within the brackets.
	~ Matches any character, including non-displayable characters, except for the characters or range of characters in brackets. For example, [~0-9] matches any character other than 0 through 9.
	^ Matches any displayable character, including the space and tab characters, except the characters or range of characters enclosed in the brackets. For example, [^0-9] matches all displayable characters, including the space and tab characters, except 0 t

**Note: For LabVIEW v7.1. Newer versions of LabVIEW provide additional capabilities**

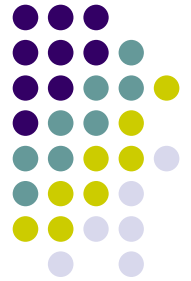
# Special Characters for Match Pattern (Continued)



Special Character	Interpreted by the Match Pattern Function As
+	Matches the longest number of instances of the expression preceding +; there must be at least one instance to constitute a match. For example, be+t matches bet and beet but not bt.
*	Matches the longest number of instances of the expression preceding * in <b>regular expression</b> , including zero instances. For example, be*t matches bt, bet, and beet.
\$	If \$ is the last character of <b>regular expression</b> , it anchors the match to the last element of <b>string</b> . The match fails unless <b>regular expression</b> matches up to and including the last character in the string. If \$ is not last, it is treated as a regular char

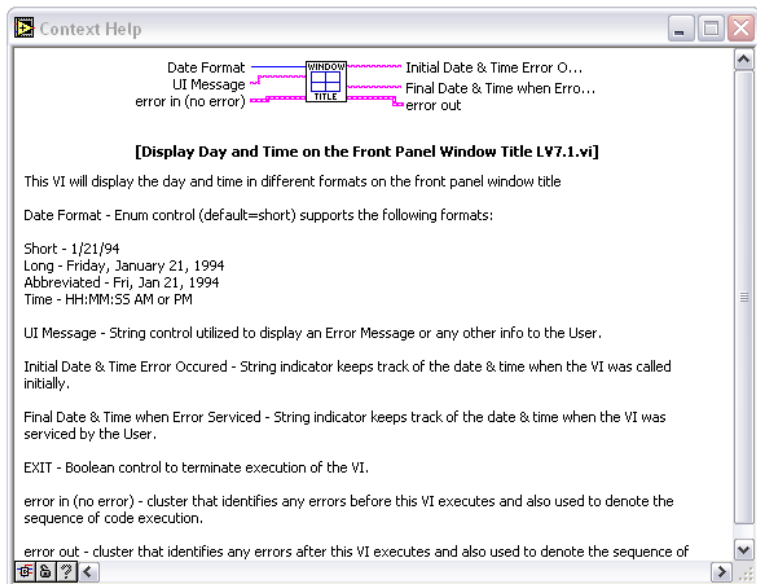
**Note: For LabVIEW v7.1. Newer versions of LabVIEW provide additional capabilities**

# Display Day and Time on the Front Panel Window Title



## ➤ Displays the day and time in different formats on the front panel window title

- **Short:** 1/21/94
- **Long:** Friday, January 21, 1994
- **Abbreviated:** Fri, Jan 21, 1994
- **Time:** HH:MM:SS AM or PM



## VI Documentation

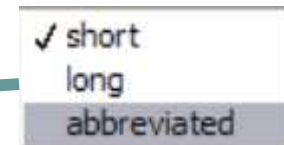
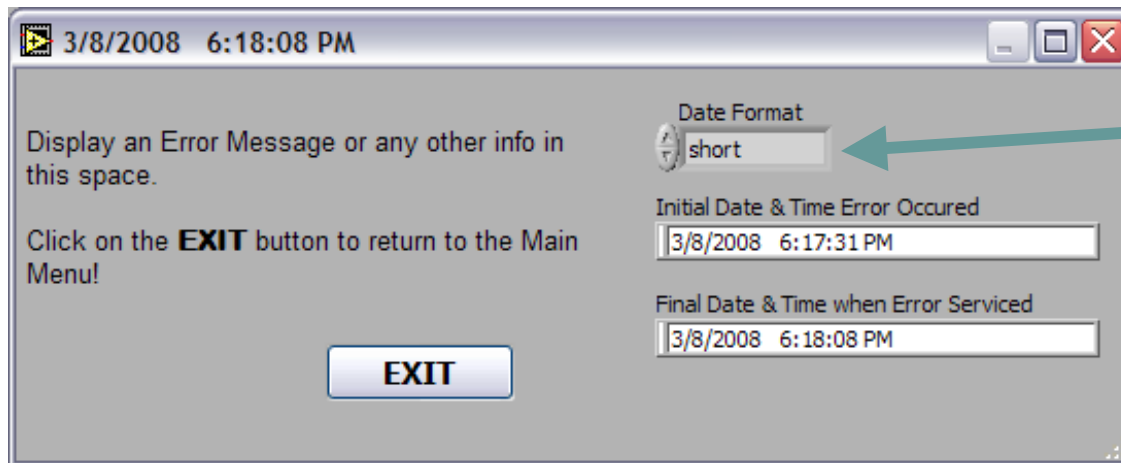
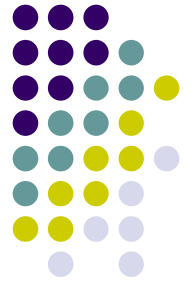


### Filename:

Display Day and Time on the Front Panel Window Title LV7.1.vi

# Display Day and Time on the Front Panel Window Title

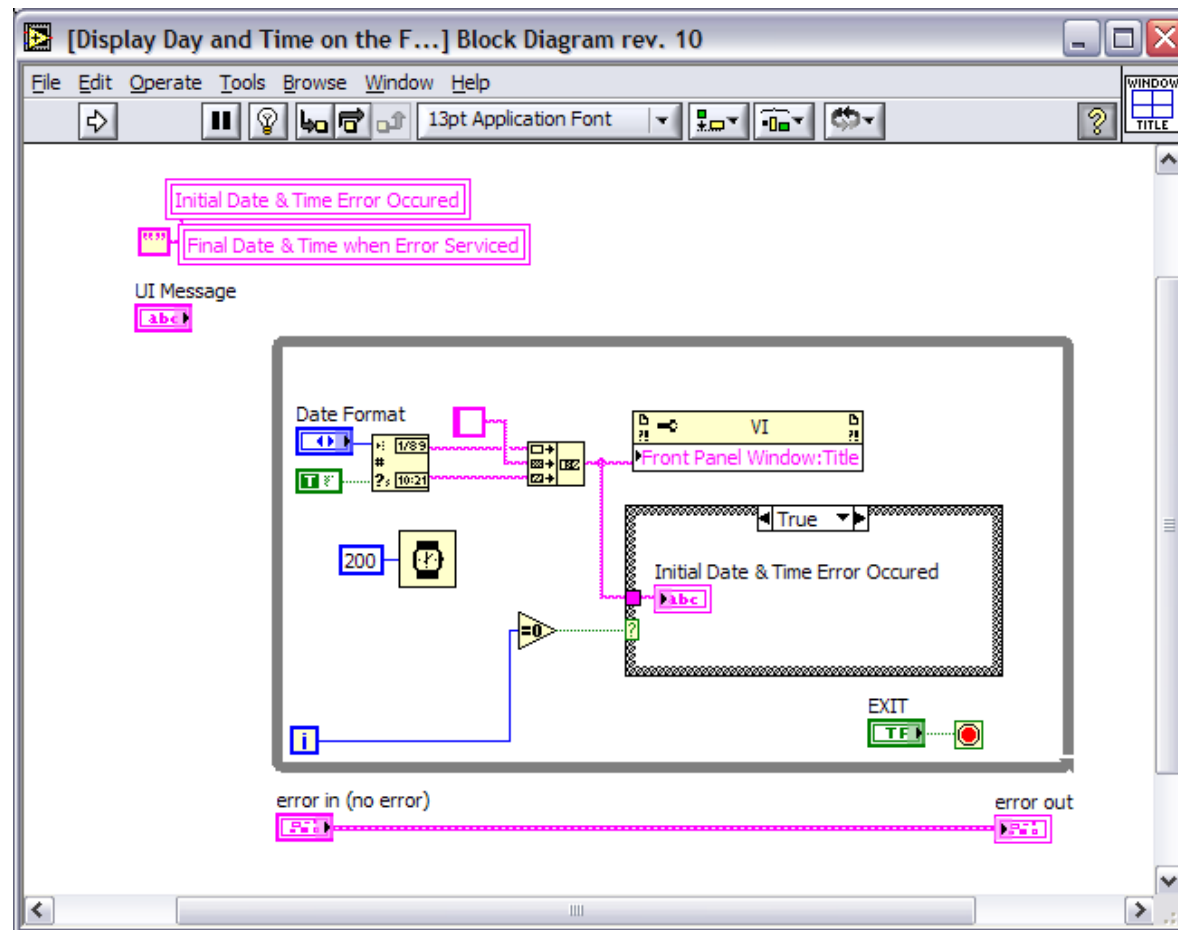
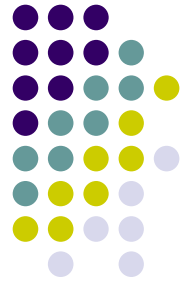
## Front Panel



Resize Front Panel  
to appear as this



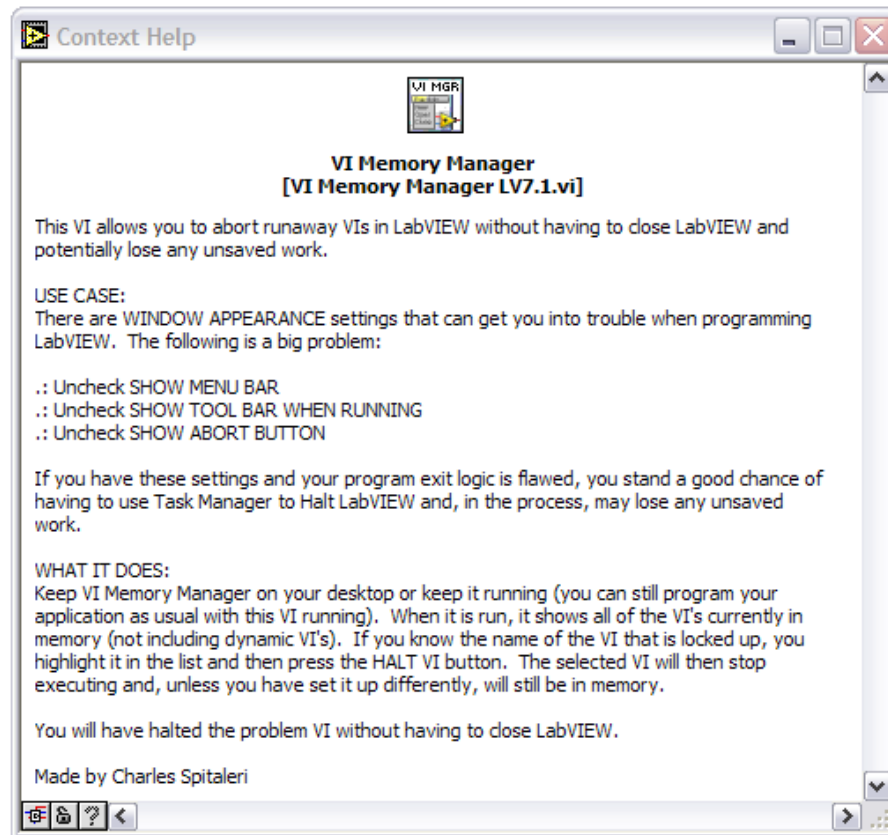
# Display Day and Time on the Front Panel Window Title Block Diagram





# VI Memory Manager

- Abort runaway VIs in LabVIEW without having to close LabVIEW and potentially lose any unsaved work



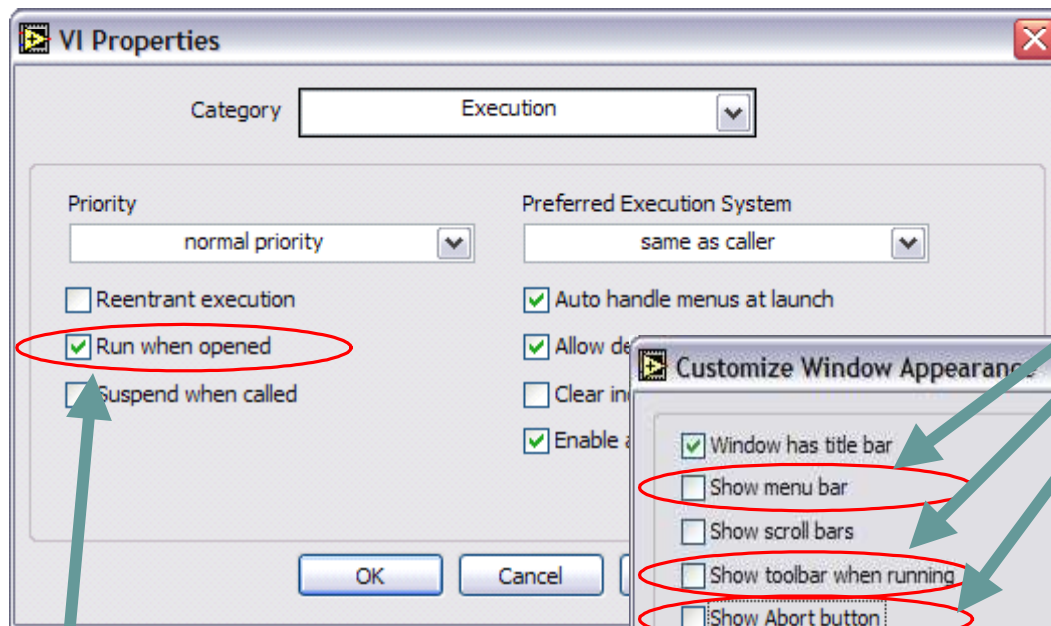
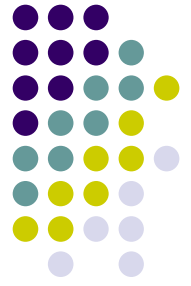
## VI Documentation



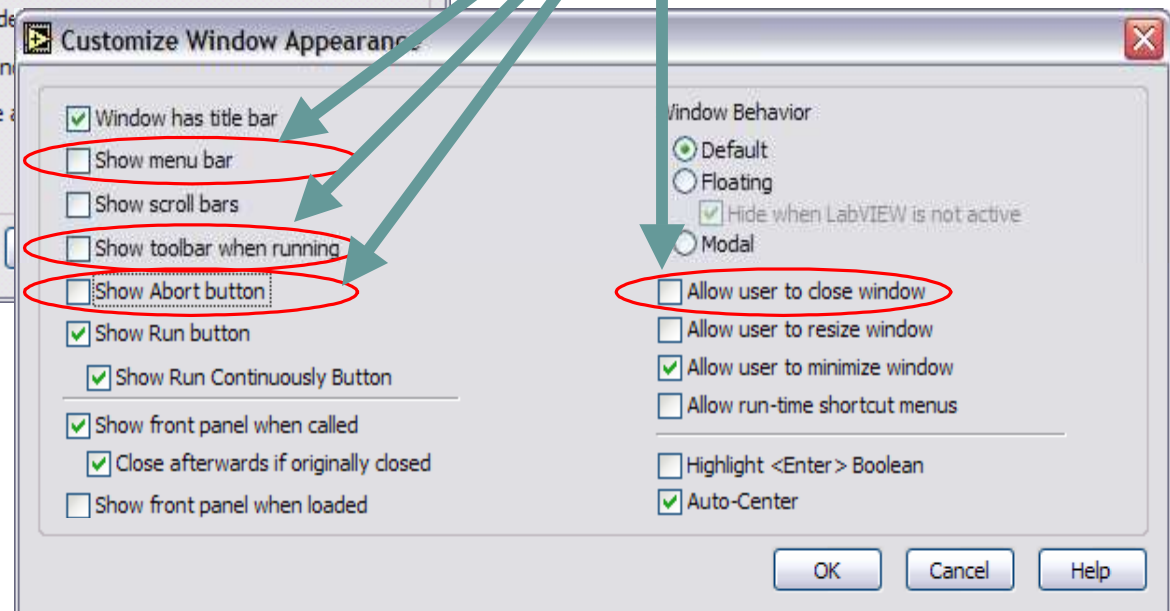
**Filenames:** VI Memory Manager LV7.1.vi & Runaway LV7.1.vi

**Note:** If you are using LabVIEW 8.0 or later use VI Memory Manager LV8.0.vi

# VI Memory Manager “VI Properties” Pitfalls

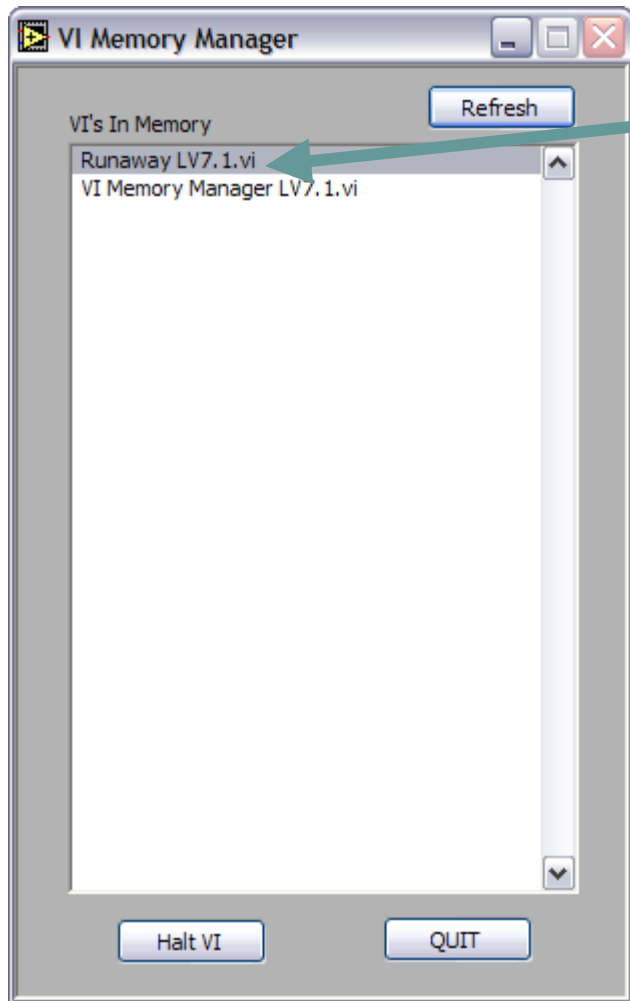
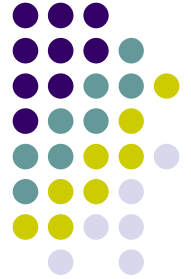


Having the VI **Run when opened** might create problems if it cannot be stopped



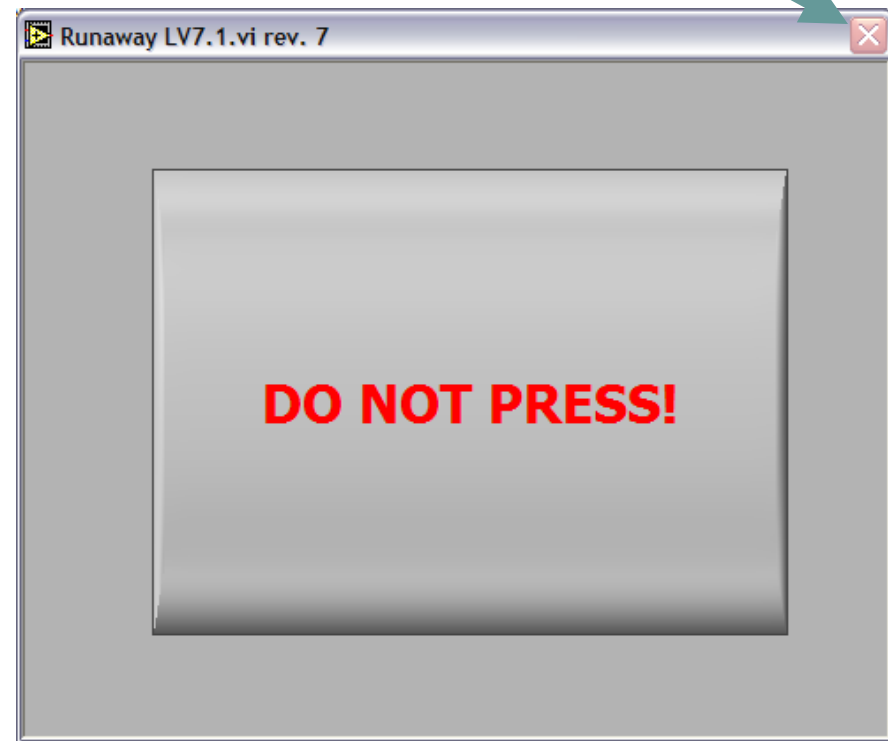
Unchecking these **Window Appearance** settings can get you into trouble when programming **LabVIEW**

# VI Memory Manager Front Panel



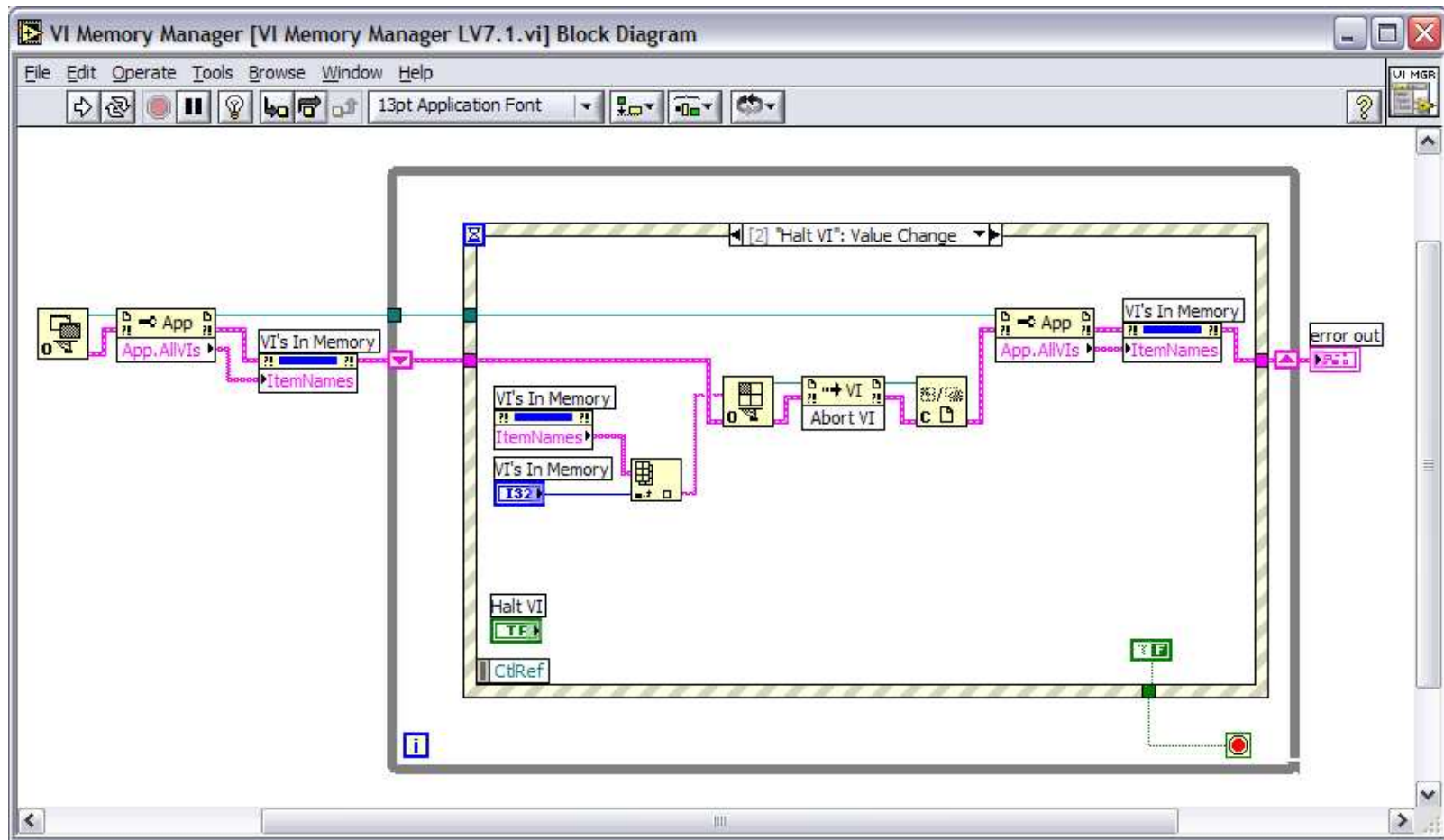
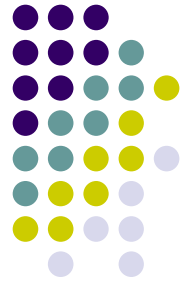
Highlight runaway VI  
and click on **Halt VI**  
button

Can not use **Close**  
button because its  
disabled

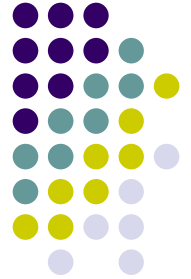




# VI Memory Manager Block Diagram



# Viewgraphs & Examples



The Viewgraphs and Examples of this presentation will be available in a few days at:

- IEEE Long Island Section website, Instrumentation & Measurement Society page

[www.IEEE.LI](http://www.IEEE.LI)

- ALE System Integration website User Group page

[www.aleconsultants.com](http://www.aleconsultants.com)