

BUILDING APPLICATIONS WITH LABVIEW

Terry Stratoudakis, PE
Certified LabVIEW Developer
Certified Professional Instructor

ALE System Integration
Melville, New York
March 5, 2009



Overview



- A. What is deployment?
- B. Why build an executable?
- C. Considerations for Deploying
- D. LabVIEW Application Builder
- E. Creating an Installer
- F. Licensing
- G. References

A. What is deployment?

- I. Among final phases of development
- II. Mainly involves executables or installers
- III. Not a trivial step
- IV. Requires testing

B. Why Build an Executable?

- I. Run VI without LabVIEW Dev. Env.
- II. Operator cannot change functionality
- III. “Controlled” environment (re: QA friendly)
- IV. More *professional*



C. Considerations for Deploying

- The architecture of your application
- The programming issues particular to the application
- The application building process
- The installer building process



Considerations...

- Architecture – e.g. plug-in, dynamically called VIs, DLLs, etc.
- Shared Variable usage
- External file locations (cfg, storage)
- Debugging needs
- External programs (DB, ActiveX)
- Deployment environment – OS and patches, fonts, screen resolution, etc.

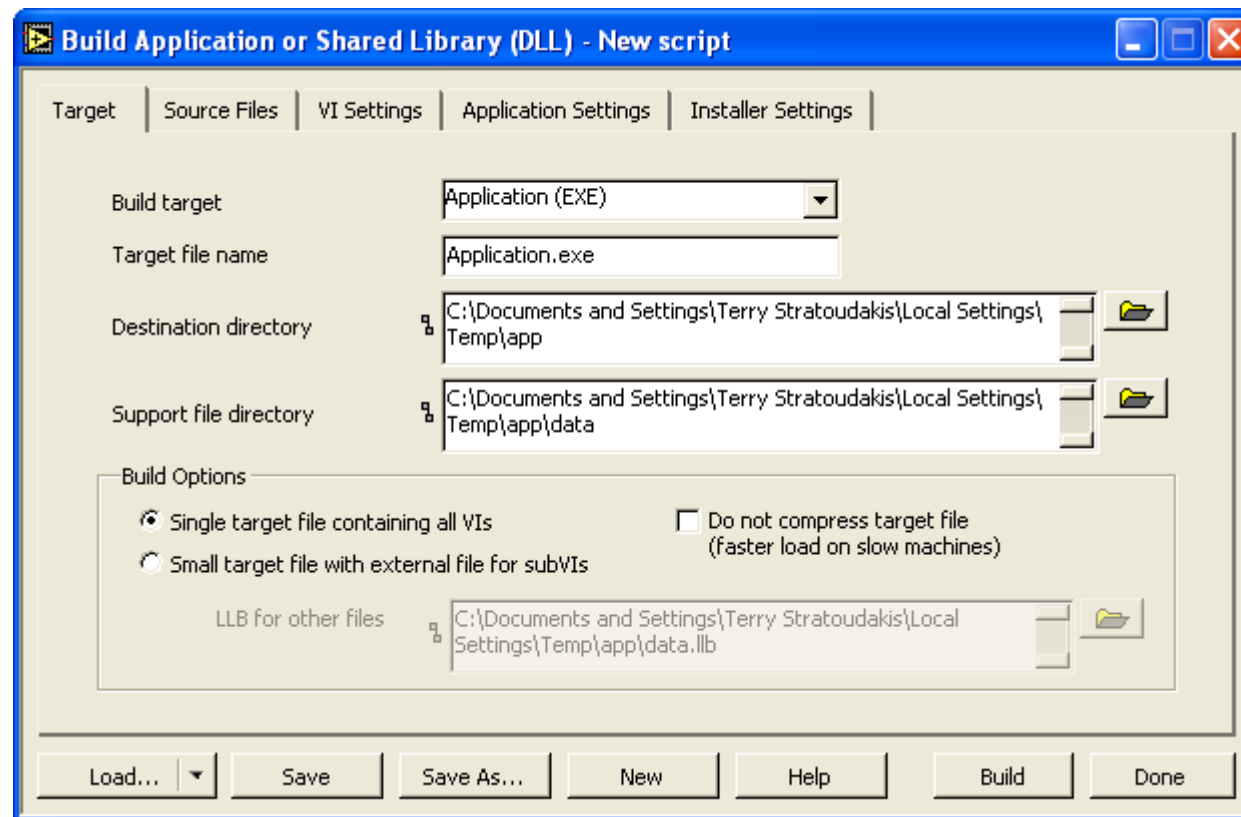


D. Application Builder

- I. Included in LabVIEW Professional Development System
 - or as an add-on package
- II. Configure and create:
 - Executables, Installers, DLLs
 - Web Services, Source Distribution



Application Builder pre 8.x

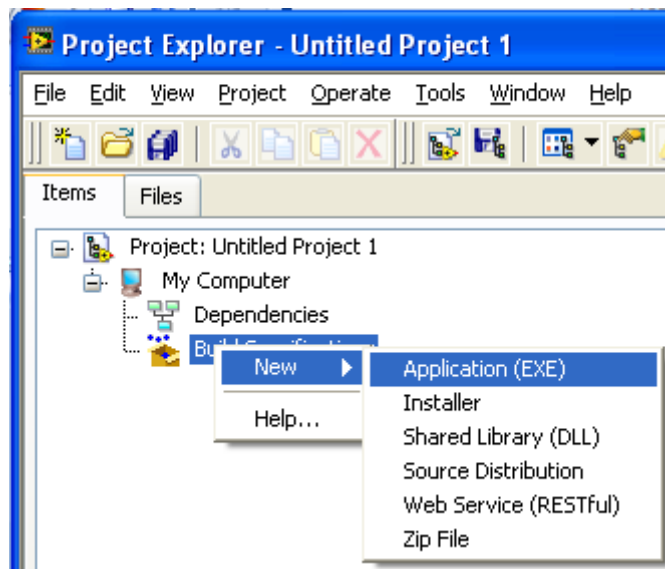


Stored as .bld files



Application Builder version 8.x

Project Explorer >> Build Specifications



- Application (EXE)
- Installer
- Shared Library (DLL)
- Source Distribution
- Web Service
- Zip File

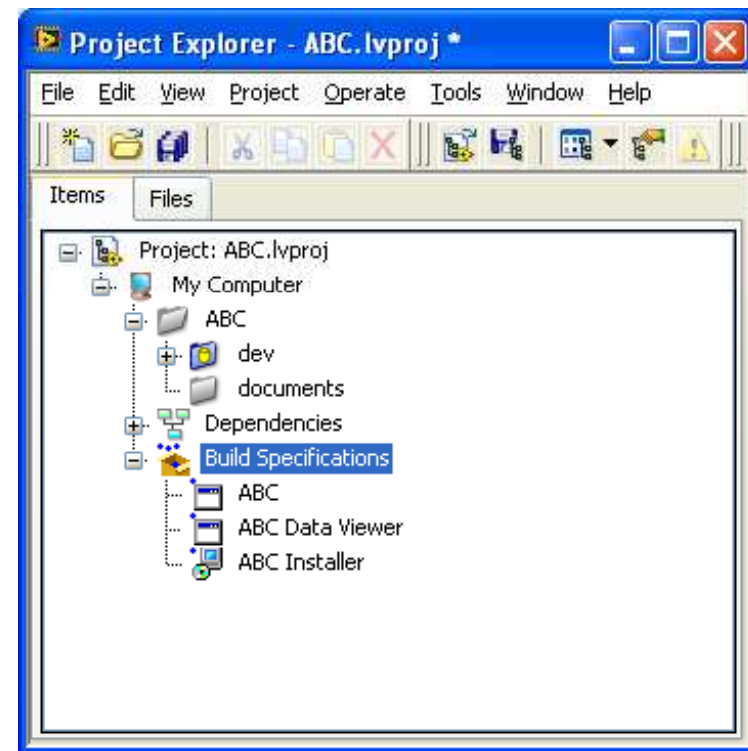
E. Creating an Installer – DEMO

LabVIEW 8.6

NI-DAQmx 8.8

LabVIEW DSC Module

Report Generation Toolkit



F. Licensing

- I. Most applications have no run-time license cost.
 - a. Certain module/toolkit licenses are included with hardware
- II. Only certain modules have run-time license
 - a. Datalogging Supervisory Control
 - b. Sound and Vibration
 - c. Vision



G. References

- LabVIEW Help >> Application Builder, Using Build Specifications
- LabVIEW wiki
<http://wiki.lavag.org/>
- LabVIEW Advanced Virtual Architects (LAVA)
<http://www.lavag.org>
- ALE System Integration website:
<http://www.alectants.com>
- National Instruments Website
<http://www.ni.com>



ALE SYSTEM INTEGRATION

<http://www.aleconsultants.com> – info@aleconsultants.com

- LabVIEW, LabWindows/CVI, TestStand, Visual Studio
- Customers: Test Labs, Manufacturers, Mil/Aero, Finance
- Based in Long Island, New York – projects nationwide
- National Instruments Certified Alliance Partner
- Over 11 Years Test & Automation experience
- Expertise in variety of instrument manufacturers' products
- All developers have National Instruments Certification

